

Tyrosine Hydroxylase(Phospho-Ser31) Antibody

Catalog No: #11211

Package Size: #11211-1 50ul #11211-2 100ul #11211-4 25ul

Orders: order@signalwayantibody.com

Support: tech@signalwayantibody.com

Description

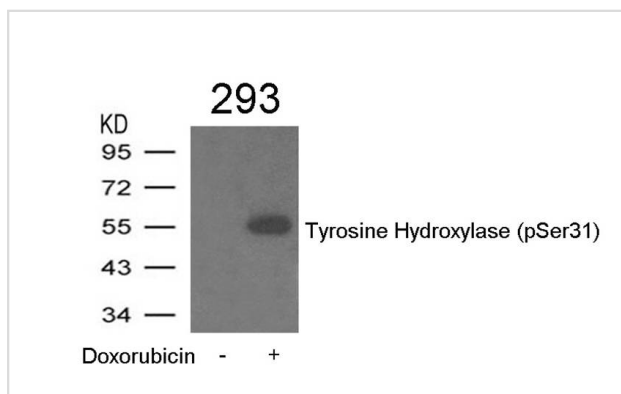
Product Name	Tyrosine Hydroxylase(Phospho-Ser31) Antibody
Host Species	Rabbit
Clonality	Polyclonal
Purification	Antibodies were produced by immunizing rabbits with synthetic phosphopeptide and KLH conjugates. Antibodies were purified by affinity-chromatography using epitope-specific phosphopeptide. Non-phospho specific antibodies were removed by chromatography using non-phosphopeptide.
Applications	WB
Species Reactivity	Hu Ms Rt
Specificity	The antibody detects endogenous levels of Tyrosine Hydroxylase only when phosphorylated at serine 31.
Immunogen Type	Peptide-KLH
Immunogen Description	Peptide sequence around phosphorylation site of serine31(V-T-S(p)-P-R) derived from human Tyrosine Hydroxylase
Target Name	Tyrosine Hydroxylase
Modification	Phospho-Ser31
Other Names	Tyrosine 3-hydroxylase; TH; Tyrosine 3-monoxygenase
Accession No.	Swiss-Prot: P07101NCBI Protein: NP_000351.2
Concentration	1.0mg/ml
Formulation	Supplied at 1.0mg/mL in phosphate buffered saline (without Mg ²⁺ and Ca ²⁺), pH 7.4, 150mM NaCl, 0.02% sodium azide and 50% glycerol.
Storage	Store at -20°C for long term preservation (recommended). Store at 4°C for short term use.

Application Details

Predicted MW: 55-60kd

Western blotting: 1:500~1:1000

Images



Western blot analysis of extracts from 293 cells treated with Doxorubicin using Tyrosine Hydroxylase(Phospho-Ser31) Antibody #11211.

Background

Plays an important role in the physiology of adrenergic neurons.

Vazin T, et al. *Stem Cells*. 2008 Jun;26(6):1517-25

Pistocchi A, et al. *BMC Dev Biol*. 2008 Mar 10;8:27

Fukakusa A, et al. *J Pharmacol Sci*. 2008 Feb;106(2):321-4.

Note: This product is for in vitro research use only and is not intended for use in humans or animals.