

## MEK1(Phospho-Ser221) Antibody

Catalog No: #11161



Package Size: #11161-1 50ul #11161-2 100ul #11161-4 25ul

Orders: [order@signalwayantibody.com](mailto:order@signalwayantibody.com)Support: [tech@signalwayantibody.com](mailto:tech@signalwayantibody.com)

## Description

Product Name	MEK1(Phospho-Ser221) Antibody
Host Species	Rabbit
Clonality	Polyclonal
Purification	Antibodies were produced by immunizing rabbits with synthetic phosphopeptide and KLH conjugates. Antibodies were purified by affinity-chromatography using epitope-specific phosphopeptide. Non-phospho specific antibodies were removed by chromatography using non-phosphopeptide.
Applications	WB IHC IF
Species Reactivity	Hu Ms Rt
Specificity	The antibody detects endogenous level of MEK1 only when phosphorylated at serine 221.
Immunogen Type	Peptide-KLH
Immunogen Description	Peptide sequence around phosphorylation site of serine 221 (A-N-S(p)-F-V) derived from Human MEK1.
Target Name	MEK1
Modification	Phospho-Ser221
Other Names	ERK activator kinase 1; MAP kinase kinase 1; MAP2K1; MAPK/ERK kinase 1; MAPKK 1
Accession No.	Swiss-Prot: Q02750NCBI Protein: NP_002746.1
Concentration	1.0mg/ml
Formulation	Supplied at 1.0mg/mL in phosphate buffered saline (without Mg <sup>2+</sup> and Ca <sup>2+</sup> ), pH 7.4, 150mM NaCl, 0.02% sodium azide and 50% glycerol.
Storage	Store at -20°C for long term preservation (recommended). Store at 4°C for short term use.

## Application Details

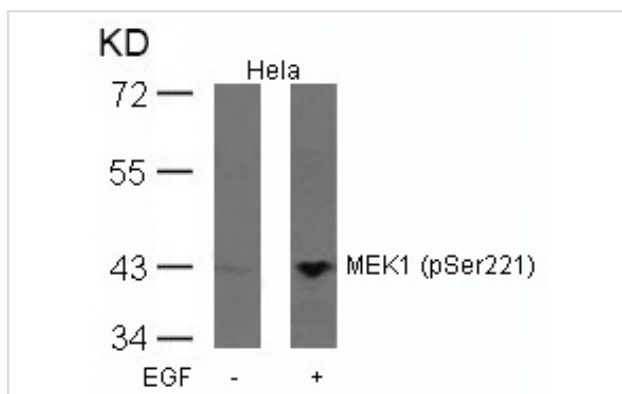
Predicted MW: 45kd

Western blotting: 1:500~1:1000

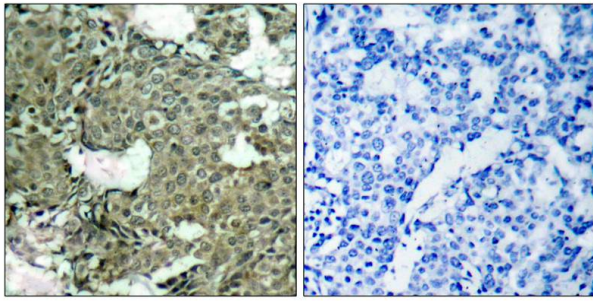
Immunohistochemistry: 1:50~1:100

Immunofluorescence: 1:100~1:200

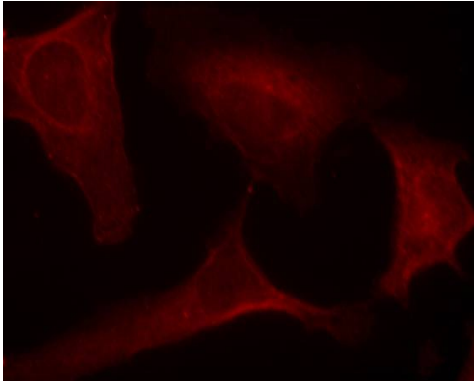
## Images



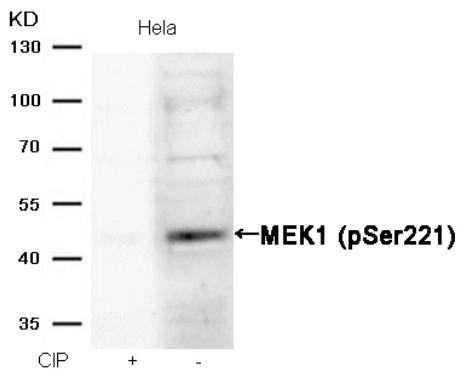
Western blot analysis of extracts from HeLa cells untreated or treated with EGF using MEK1(Phospho-Ser221) Antibody #11161.



Immunohistochemical analysis of paraffin-embedded human breast carcinoma tissue using MEK1(Phospho-Ser221) Antibody #11161(left) or the same antibody preincubated with blocking peptide(right).



Immunofluorescence staining of methanol-fixed HeLa cells using MEK1(Phospho-Ser221) Antibody #11161.



Western blot analysis of extracts from HeLa cells, treated with calf intestinal phosphatase (CIP), using MEK1 (Phospho-Ser221) Antibody #11161.

## Background

Catalyzes the concomitant phosphorylation of a threonine and a tyrosine residue in a Thr-Glu-Tyr sequence located in MAP kinases. Activates ERK1 and ERK2 MAP kinases.

Zebisch A, et al. (2006) *Cancer Res*; 66(7): 3401-8.

Luciano BS, et al. (2006) *J Biol Chem*; 279(50): 52117-23.

Wang X, et al. (2003) *Oncogene*; 22(1): 109-16.

Gopalbhai K, et al. (2003) *J Biol Chem*; 278(10): 8118-25.

Ling MT, et al. (2002) *Oncogene*; 21(55): 8498-505.

## Published Papers

Akira Ikari, Kosuke Atomi, Keishi Kinjo et al., Magnesium deprivation inhibits a MEK<sup>1</sup>/ERK1/2 cascade and cell proliferation in renal epithelial Madin-Darby canine kidney cells., *Life Sciences*, 86: 766B-C773(2010)

[PMID:20338184](https://pubmed.ncbi.nlm.nih.gov/20338184/)

---

Note: This product is for in vitro research use only and is not intended for use in humans or animals.