

b-Catenin(Phospho-Thr41/Ser45) Antibody

Catalog No: #11116



Package Size: #11116-1 50ul #11116-2 100ul #11116-4 25ul

Orders: order@signalwayantibody.com

Support: tech@signalwayantibody.com

Description

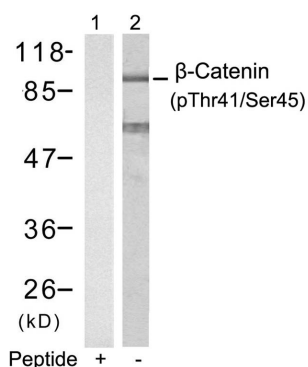
Product Name	b-Catenin(Phospho-Thr41/Ser45) Antibody
Host Species	Rabbit
Clonality	Polyclonal
Purification	Antibodies were produced by immunizing rabbits with synthetic phosphopeptide and KLH conjugates. Antibodies were purified by affinity-chromatography using epitope-specific phosphopeptide. Non-phospho specific antibodies were removed by chromatography using non-phosphopeptide.
Applications	WB
Species Reactivity	Human Mouse Rat
Specificity	The antibody detects endogenous level of b-Catenin only when phosphorylated at threonine 41/serine 45.
Immunogen Type	Peptide-KLH
Immunogen Description	Peptide sequence around phosphorylation site of threonine 41/serine 45 (A-T-T(p)-T-A-P-S(p)-L-S) derived from Human b-Catenin.
Target Name	b-Catenin
Modification	Phospho-Thr41/Ser45
Other Names	CTNNB1; CATNB; CTNB1; CTNNB;
Accession No.	Swiss-Prot: P35222NCBI Protein: NP_001091679.1
Concentration	1.0mg/ml
Formulation	Supplied at 1.0mg/mL in phosphate buffered saline (without Mg ²⁺ and Ca ²⁺), pH 7.4, 150mM NaCl, 0.02% sodium azide and 50% glycerol.
Storage	Store at -20°C for long term preservation (recommended). Store at 4°C for short term use.

Application Details

Predicted MW: 92kd

Western blotting: 1:500~1:1000

Images



Western blot analysis of extracts from SW626 cells using b-Catenin(Phospho-Thr41/Ser45) Antibody #11116(Lane 2) and the same antibody preincubated with blocking peptide(Lane1).

Background

Involved in the regulation of cell adhesion and in signal transduction through the Wnt pathway.

Provost E, et al. (2003) J Biol Chem 278(34): 31781-9.

Sakanaka C, et al. (2003) J Biochem (Tokyo); 132(5): 697-703.

Amit S, et al. (2002) Genes Dev; 16(9): 1066-76.

Liu C, et al. (2002) Cell; 108(6): 837-47.

Provost E, et al. (2005) Oncogene; 24(16): 2667-76.

Note: This product is for in vitro research use only and is not intended for use in humans or animals.