

G3BP-1(Phospho-Ser232) Antibody

Catalog No: #11082

Package Size: #11082-1 50ul #11082-2 100ul #11082-4 25ul

Orders: order@signalwayantibody.comSupport: tech@signalwayantibody.com

Description

Product Name	G3BP-1(Phospho-Ser232) Antibody
Host Species	Rabbit
Clonality	Polyclonal
Purification	Antibodies were produced by immunizing rabbits with synthetic phosphopeptide and KLH conjugates. Antibodies were purified by affinity-chromatography using epitope-specific phosphopeptide. Non-phospho specific antibodies were removed by chromatography using non-phosphopeptide.
Applications	WB IHC IF
Species Reactivity	Hu
Specificity	The antibody detects endogenous level of G3BP-1 only when phosphorylated at serine 232.
Immunogen Type	Peptide-KLH
Immunogen Description	Peptide sequence around phosphorylation site of serine 232 (S-S-S(p)-P-A) derived from Human G3BP-1.
Target Name	G3BP-1
Modification	Phospho-Ser232
Other Names	G3BP; GAP SH3-domain binding protein 1;
Accession No.	Swiss-Prot: Q13283NCBI Protein: NP_005745.1
Concentration	1.0mg/ml
Formulation	Supplied at 1.0mg/mL in phosphate buffered saline (without Mg ²⁺ and Ca ²⁺), pH 7.4, 150mM NaCl, 0.02% sodium azide and 50% glycerol.
Storage	Store at -20°C for long term preservation (recommended). Store at 4°C for short term use.

Application Details

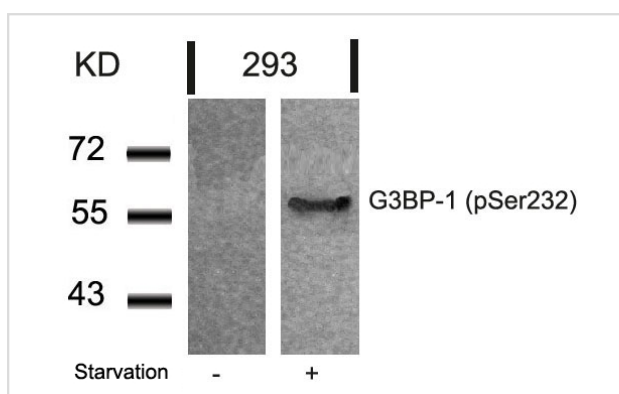
Predicted MW: 60kd

Western blotting: 1:500~1:1000

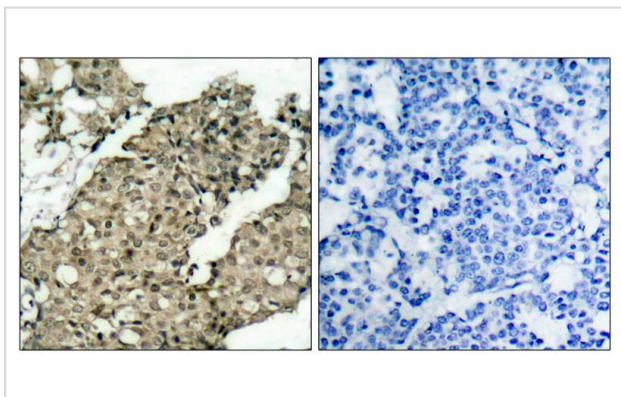
Immunohistochemistry: 1:50~1:100

Immunofluorescence: 1:100~1:200

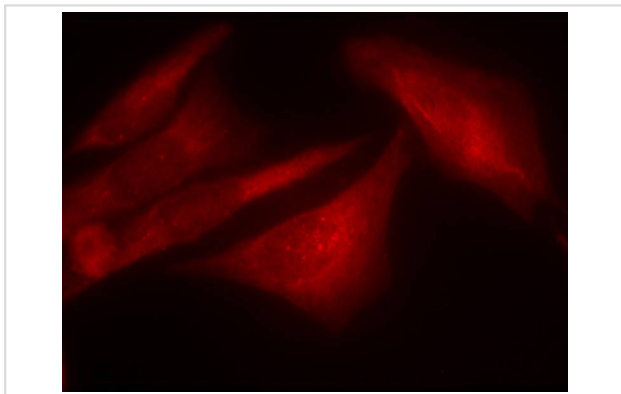
Images



Western blot analysis of extracts from 293 cells untreated or treated with starvation using G3BP-1(Phospho-Ser232) Antibody #11082.



Immunohistochemical analysis of paraffin-embedded human breast carcinoma tissue using G3BP-1(Phospho-Ser232) Antibody #11082(left) or the same antibody preincubated with blocking peptide(right).



Immunofluorescence staining of methanol-fixed HeLa cells using G3BP-1(Phospho-Ser232) Antibody #11082.

Background

May be a regulated effector of stress granule assembly. Phosphorylation-dependent sequence-specific endoribonuclease in vitro. Cleaves exclusively between cytosine and adenine and cleaves MYC mRNA preferentially at the 3'-UTR. ATP- and magnesium-dependent helicase. Unwinds preferentially partial DNA and RNA duplexes having a 17 bp annealed portion and either a hanging 3' tail or hanging tails at both 5'- and 3'-ends. Unwinds DNA/DNA, RNA/DNA, and RNA/RNA substrates with comparable efficiency. Acts unidirectionally by moving in the 5' to 3' direction along the bound single-stranded DNA.

Tao WA, et al. (2005) Nat Methods. 2(8): 591-598.

Zheng H, et al. (2005) Mol Cell Proteomics. 4(6):721-730.

Beausoleil SA, et al. (2004) Proc Natl Acad Sci U S A.101 (33): 12130-12135.

Tourrihre H, et al. (2003) J Cell Biol.160 (6): 823-831.

Note: This product is for in vitro research use only and is not intended for use in humans or animals.