

## HER2(Phospho-Tyr1248) Antibody

Catalog No: #11079



Package Size: #11079-1 50ul #11079-2 100ul #11079-4 25ul

Orders: order@signalwayantibody.com

Support: tech@signalwayantibody.com

## Description

|                       |                                                                                                                                                                                                                                                                                      |
|-----------------------|--------------------------------------------------------------------------------------------------------------------------------------------------------------------------------------------------------------------------------------------------------------------------------------|
| Product Name          | HER2(Phospho-Tyr1248) Antibody                                                                                                                                                                                                                                                       |
| Host Species          | Rabbit                                                                                                                                                                                                                                                                               |
| Clonality             | Polyclonal                                                                                                                                                                                                                                                                           |
| Purification          | Antibodies were produced by immunizing rabbits with synthetic phosphopeptide and KLH conjugates. Antibodies were purified by affinity-chromatography using epitope-specific phosphopeptide. Non-phospho specific antibodies were removed by chromatography using non-phosphopeptide. |
| Applications          | WB IHC IF                                                                                                                                                                                                                                                                            |
| Species Reactivity    | Hu Ms Rt                                                                                                                                                                                                                                                                             |
| Specificity           | The antibody detects endogenous level of HER2 only when phosphorylated at tyrosine1248.                                                                                                                                                                                              |
| Immunogen Type        | Peptide-KLH                                                                                                                                                                                                                                                                          |
| Immunogen Description | Peptide sequence around phosphorylation site of tyrosine1248 (P-E-Y(p)-L-G) derived from Human HER2.                                                                                                                                                                                 |
| Target Name           | HER2                                                                                                                                                                                                                                                                                 |
| Modification          | Phospho-Tyr1248                                                                                                                                                                                                                                                                      |
| Other Names           | C-erbB-2; ErbB2;                                                                                                                                                                                                                                                                     |
| Accession No.         | Swiss-Prot: P04626NCBI Protein: NP_001005862.1                                                                                                                                                                                                                                       |
| Concentration         | 1.0mg/ml                                                                                                                                                                                                                                                                             |
| Formulation           | Supplied at 1.0mg/mL in phosphate buffered saline (without Mg <sup>2+</sup> and Ca <sup>2+</sup> ), pH 7.4, 150mM NaCl, 0.02% sodium azide and 50% glycerol.                                                                                                                         |
| Storage               | Store at -20°C for long term preservation (recommended). Store at 4°C for short term use.                                                                                                                                                                                            |

## Application Details

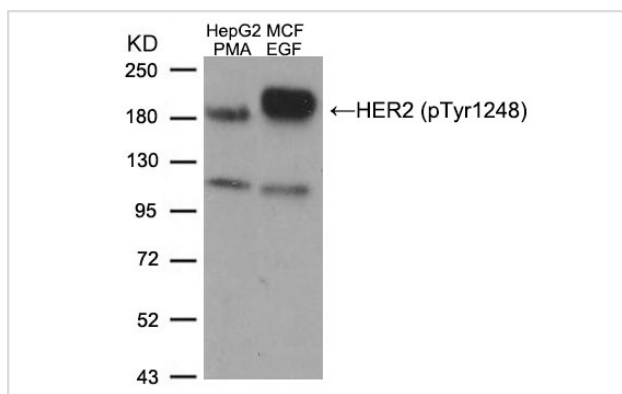
Predicted MW: 185kd

Western blotting: 1:500~1:1000

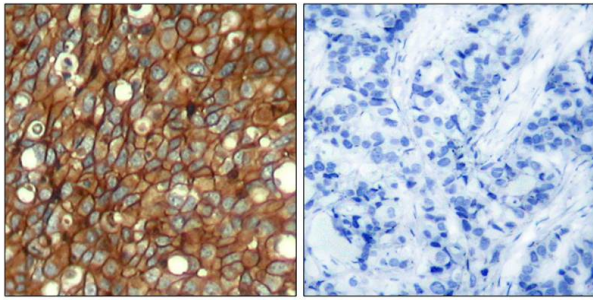
Immunohistochemistry: 1:50~1:100

Immunofluorescence: 1:100~1:200

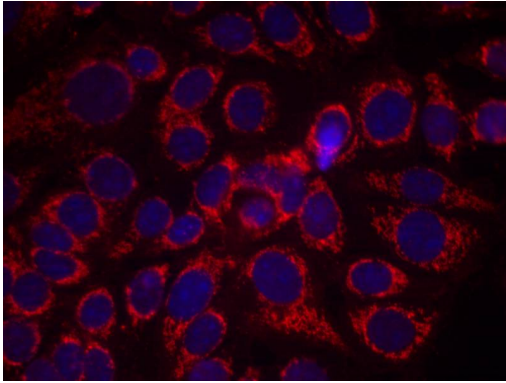
## Images



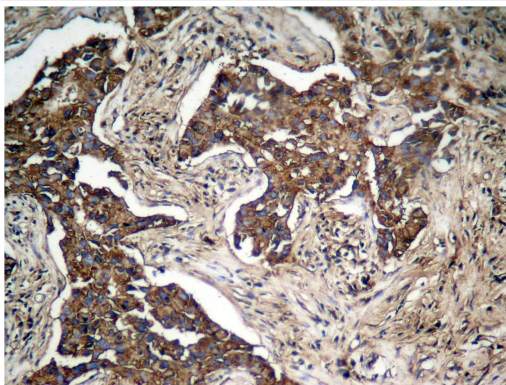
Western blot analysis of extracts from HepG2 cells treated with PMA and MCF cells treated with EGF, using HER2 (Phospho-Tyr1248) Antibody #11079.



Immunohistochemical analysis of paraffin-embedded human breast carcinoma tissue using HER2 (Phospho-Tyr1248) Antibody #11079 (left) or the same antibody preincubated with blocking peptide #51079 (right).



Immunofluorescence staining of methanol-fixed MCF7 cells using HER2(Phospho-Tyr1248) Antibody #11079.



Immunohistochemical analysis of paraffin-embedded human lung carcinoma tissue, using HER2 (Phospho-Tyr1248) Antibody #11079.

## Background

Essential component of a neuregulin-receptor complex, although neuregulins do not interact with it alone. GP30 is a potential ligand for this receptor. Not activated by EGF, TGF- $\alpha$  and amphiregulin.

Yuan, Lu Qian, Ming Shi, et al. (2008) HER2-dependent MMP-7 expression is mediated by activated STAT3 *Guogang Cellular Signalling*, 20:1284

## Published Papers

Yuan Guogang, Lu Qian, Ming Shi et al., HER2-dependent MMP-7 expression is mediated by activated STAT3., *Cellular Signalling*, 20(7):1284B-C1291(2008)

PMID:18411043

Note: This product is for in vitro research use only and is not intended for use in humans or animals.