

## PTEN(Phospho-Ser380/Thr382/Thr383) Antibody

Catalog No: #11056



Package Size: #11056-1 50ul #11056-2 100ul #11056-4 25ul

Orders: [order@signalwayantibody.com](mailto:order@signalwayantibody.com)Support: [tech@signalwayantibody.com](mailto:tech@signalwayantibody.com)

## Description

Product Name	PTEN(Phospho-Ser380/Thr382/Thr383) Antibody
Host Species	Rabbit
Clonality	Polyclonal
Purification	Antibodies were produced by immunizing rabbits with synthetic phosphopeptide and KLH conjugates. Antibodies were purified by affinity-chromatography using epitope-specific phosphopeptide. Non-phospho specific antibodies were removed by chromatography using non-phosphopeptide.
Applications	WB IHC IF
Species Reactivity	Hu Ms Rt
Specificity	The antibody detects endogenous level of PTEN only when phosphorylated at serine 380 and threonine 382/383.
Immunogen Type	Peptide-KLH
Immunogen Description	Peptide sequence around phosphorylation site of threonine 380/382/383 (R-Y-S(p)-D-T(p)-T(p)-D-S) derived from Human PTEN.
Target Name	PTEN
Modification	Phospho-Ser380/Thr382/Thr383
Other Names	MMAC1; Mutated in multiple advanced cancers 1; Protein-tyrosine phosphatase PTEN; TEP1;
Accession No.	Swiss-Prot: P60484NCBI Protein: NP_000305.3
Concentration	1.0mg/ml
Formulation	Supplied at 1.0mg/mL in phosphate buffered saline (without Mg <sup>2+</sup> and Ca <sup>2+</sup> ), pH 7.4, 150mM NaCl, 0.02% sodium azide and 50% glycerol.
Storage	Store at -20°C for long term preservation (recommended). Store at 4°C for short term use.

## Application Details

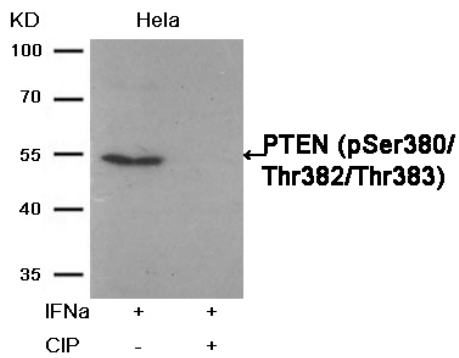
Predicted MW: 54kd

Western blotting: 1:500~1:1000

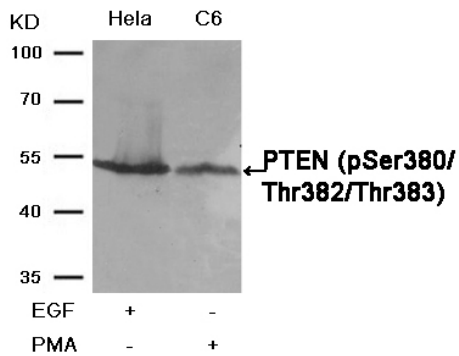
Immunohistochemistry: 1:50~1:100

Immunofluorescence: 1:100~1:200

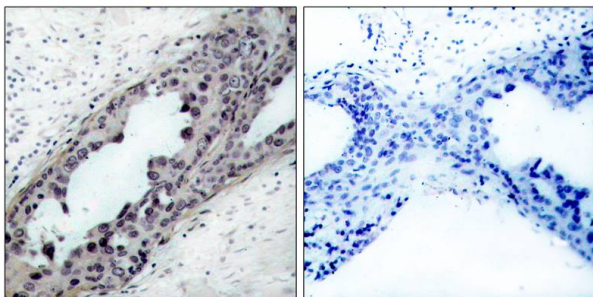
## Images



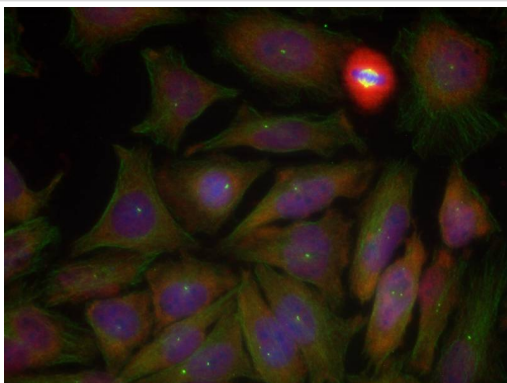
Western blot analysis of extracts from HeLa cells, treated with IFN $\alpha$  or calf intestinal phosphatase (CIP), using PTEN (Phospho-Ser380/Thr382/Thr383) Antibody #11056.



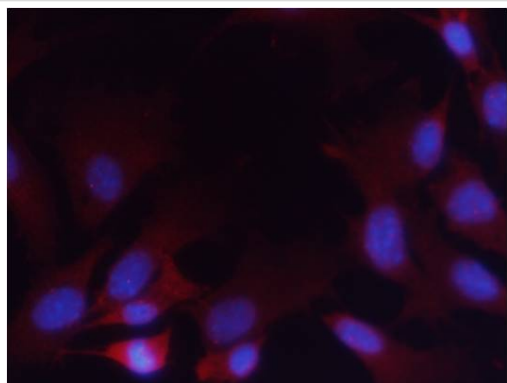
Western blot analysis of extracts from HeLa and C6 cells, treated with EGF or PMA, using PTEN(Phospho-Ser380/Thr382/Thr383) Antibody #11056.



Immunohistochemical analysis of paraffin-embedded human breast carcinoma tissue, using PTEN(Phospho-Ser380/Thr382/Thr383) Antibody #11056(left) or the same antibody preincubated with blocking peptide(right).



Immunofluorescence staining of methanol-fixed HeLa cells using PTEN(Phospho-Ser380/Thr382/Thr383) Antibody #11056.



Immunofluorescence staining of methanol-fixed MEF cells using PTEN (Phospho-Ser380/Thr382/Thr383) Antibody #11056.

## Background

Tumor suppressor. Acts as a dual-specificity protein phosphatase, dephosphorylating tyrosine-, serine- and threonine-phosphorylated proteins. Also acts as a lipid phosphatase, removing the phosphate in the D3 position of the inositol ring from phosphatidylinositol 3,4,5-trisphosphate, phosphatidylinositol 3,4-diphosphate, phosphatidylinositol 3-phosphate and inositol 1,3,4,5-tetrakisphosphate with order of substrate preference in vitro  $\text{PtdIns}(3,4,5)\text{P}_3 > \text{PtdIns}(3,4)\text{P}_2 > \text{PtdIns}3\text{P} > \text{Ins}(1,3,4,5)\text{P}_4$ . The lipid phosphatase activity is critical for its tumor suppressor function. Antagonizes the PI3K-AKT/PKB signaling pathway by dephosphorylating phosphoinositides and thereby modulating cell cycle progression and cell survival. The unphosphorylated form cooperates with AIP1 to suppress AKT1 activation. Dephosphorylates tyrosine-phosphorylated focal adhesion kinase and inhibits cell migration and integrin-mediated cell spreading and focal adhesion formation. May be a negative regulator of insulin signaling and glucose metabolism in adipose tissue.

Al-Khoury AM, et al. (2005) *J Biol Chem.* 280(42):35195-35202.

Torres J, et al. (2001) *J Biol Chem.* 276(2): 993-998.

Vazquez F, et al. (2000) *Mol Cell Biol.* 20(14): 5010-5018.

---

Note: This product is for in vitro research use only and is not intended for use in humans or animals.