

CREB(Phospho-Ser133) Antibody

Catalog No: #11052



Package Size: #11052-1 50ul #11052-2 100ul #11052-4 25ul

Orders: order@signalwayantibody.com

Support: tech@signalwayantibody.com

Description

Product Name	CREB(Phospho-Ser133) Antibody
Host Species	Rabbit
Clonality	Polyclonal
Purification	Antibodies were produced by immunizing rabbits with synthetic phosphopeptide and KLH conjugates. Antibodies were purified by affinity-chromatography using epitope-specific phosphopeptide. Non-phospho specific antibodies were removed by chromatography using non-phosphopeptide.
Applications	WB IHC
Species Reactivity	Human Mouse Rat
Specificity	The antibody detects endogenous level of CREB only when phosphorylated at serine 133.
Immunogen Type	Peptide-KLH
Immunogen Description	Peptide sequence around phosphorylation site of serine 133 (R-P-S(p)-Y-R) derived from Human CREB.
Target Name	CREB
Modification	Phospho-Ser133
Other Names	CREB-1; CREB1;
Accession No.	Swiss-Prot: P16220NCBI Protein: NP_004370.1
Concentration	1.0mg/ml
Formulation	Supplied at 1.0mg/mL in phosphate buffered saline (without Mg ²⁺ and Ca ²⁺), pH 7.4, 150mM NaCl, 0.02% sodium azide and 50% glycerol.
Storage	Store at -20°C for long term preservation (recommended). Store at 4°C for short term use.

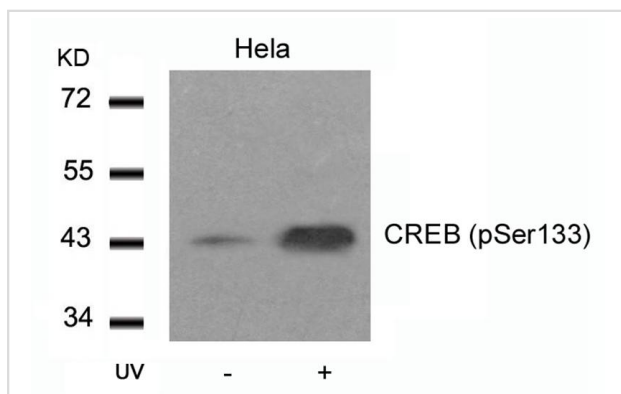
Application Details

Predicted MW: 43kd

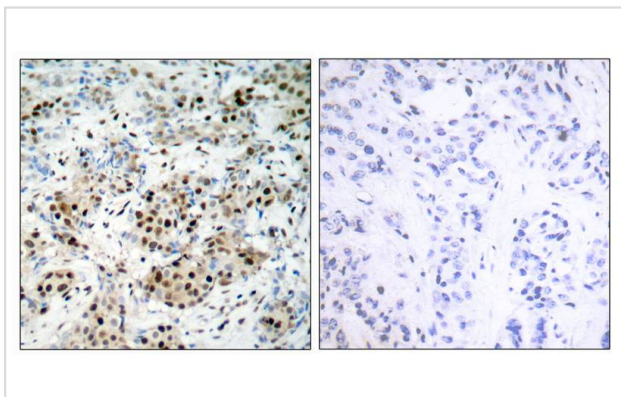
Western blotting: 1:500~1:1000

Immunohistochemistry: 1:50~1:100

Images



Western blot analysis of extracts from HeLa cells untreated or treated with UV using CREB(Phospho-Ser133) Antibody #11052.



Immunohistochemical analysis of paraffin-embedded human breast carcinoma tissue using CREB(Phospho-Ser133) Antibody #11052(left) or the same antibody preincubated with blocking peptide(right).

Background

CREB1 is a transcription factor that is a member of the bZIP family of DNA binding proteins. It binds as a homodimer to the CRE (cAMP-Responsive Element), an octameric palindrome containing a conserved core sequence, 5-prime-TGACG-3-prime. It consists of two transcript variants encoding respective isoforms produced by alternate splicing. It is mapped to 2q32.3-q34. It is phosphorylated by several protein kinases and induces transcription of genes in response to hormonal stimulation of the cAMP pathway. CREB1 is crucial for the consolidation of long-term conditioned fear memories, but not for encoding, storage, or retrieval of these memories. It is required for the stability of reactivated or retrieved conditioned fear memories.

Xing J, et al. (1998) *Mol Cell Biol* 18(4): 1946-55.

Tan Y, et al. (1996) *EMBO J*; 15(17): 4629-42.

Hao, M. et al. (1996) *J. Biol. Chem.* 271, 29380-29385.

Mayo LD, et al. (2001) *Biol Chem*; 276(27): 25184-9.

Note: This product is for in vitro research use only and is not intended for use in humans or animals.