

STAT3(Phospho-Ser727) Antibody

Catalog No: #11046



Package Size: #11046-1 50ul #11046-2 100ul #11046-4 25ul

Orders: order@signalwayantibody.com

Support: tech@signalwayantibody.com

Description

Product Name	STAT3(Phospho-Ser727) Antibody
Host Species	Rabbit
Clonality	Polyclonal
Purification	Antibodies were produced by immunizing rabbits with synthetic phosphopeptide and KLH conjugates. Antibodies were purified by affinity-chromatography using epitope-specific phosphopeptide. Non-phospho specific antibodies were removed by chromatography using non-phosphopeptide.
Applications	WB IHC IF
Species Reactivity	Hu Ms Rt
Specificity	The antibody detects endogenous level of STAT3 only when phosphorylated at serine 727.
Immunogen Type	Peptide-KLH
Immunogen Description	Peptide sequence around phosphorylation site of serine 727 (P-M-S(p)-P-R) derived from Human STAT3.
Target Name	STAT3
Modification	Phospho-Ser727
Other Names	APRF, HIES
Accession No.	Swiss-Prot: P40763NCBI Protein: NP_003141.2
Concentration	1.0mg/ml
Formulation	Supplied at 1.0mg/mL in phosphate buffered saline (without Mg ²⁺ and Ca ²⁺), pH 7.4, 150mM NaCl, 0.02% sodium azide and 50% glycerol.
Storage	Store at -20°C for long term preservation (recommended). Store at 4°C for short term use.

Application Details

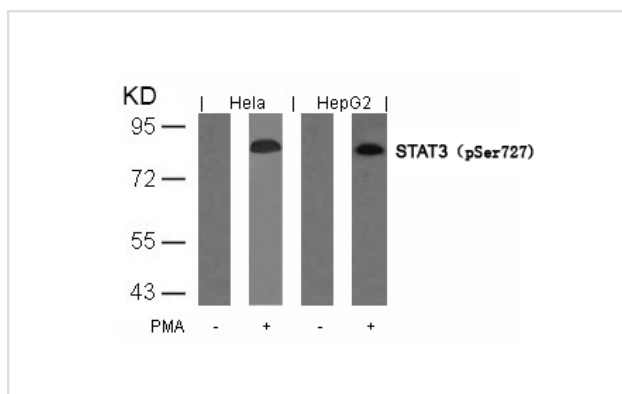
Predicted MW: 88kd

Western blotting: 1:500~1:1000

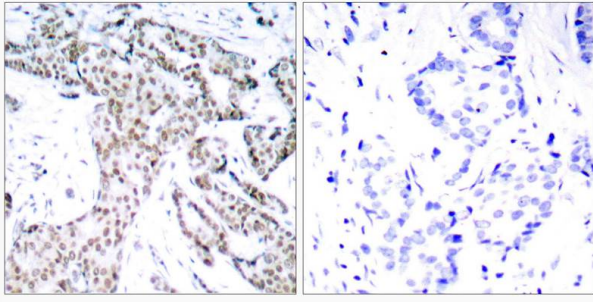
Immunohistochemistry: 1:50~1:100

Immunofluorescence: 1:100~1:200

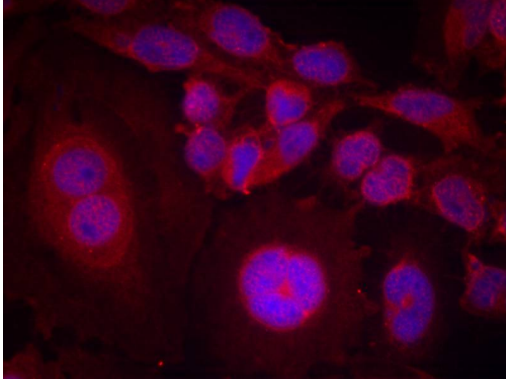
Images



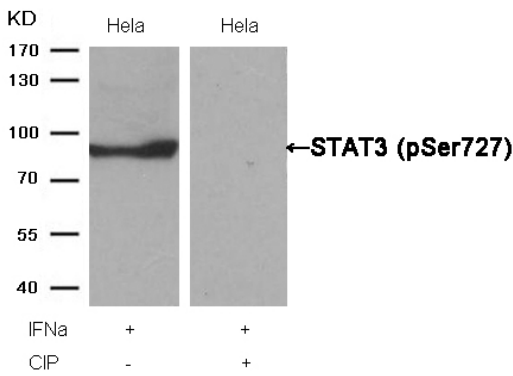
Western blot analysis of extracts from HeLa and HepG2 cells untreated or treated with PMA using STAT3(Phospho-Ser727) Antibody #11046.



Immunohistochemical analysis of paraffin-embedded human breast carcinoma tissue using STAT3(Phospho-Ser727) Antibody #11046(left) or the same antibody preincubated with blocking peptide(right).



Immunofluorescence staining of methanol-fixed HeLa cells using STAT3(Phospho-Ser727) Antibody #11046.



Western blot analysis of extracts from HeLa cells, treated with IFN α or calf intestinal phosphatase (CIP), using STAT3 (Phospho-Ser727) Antibody #11046.

Background

Transcription factor that binds to the interleukin-6 (IL-6)-responsive elements identified in the promoters of various acute-phase protein genes.

Activated by IL31 through IL31RA.

Heim M H, (1999) J Recept Signal Transduct Res. 19: 75-120.

Takeda K, et al. (1997) Proc Natl Acad Sci USA. 94: 3801-3804.

Catlett-Falcone R, et al. (1999) Immunity. 10: 105-115.

Garcia R, et al. (1998) J Biomed Sci. 5: 79-85.

Bromberg J F, et al. (1999) Cell. 98: 295-303.

Published Papers

ANIRBAN MAJUMDER, SASWATI BANERJEE, JOSHUA A. HARRILL et al., Neurotrophic Effects of Leukemia Inhibitory Factor on Neural Cells

Derived from Human Embryonic Stem Cells., STEM CELLS, 30:2387B-C2399(2012)

[PMID:22899336](https://pubmed.ncbi.nlm.nih.gov/22899336/)

Heng-Chao Yu, Hong-Yan Qin, Fei He et al., Canonical Notch Pathway Protects Hepatocytes from Ischemia/Reperfusion Injury in Mice by Repressing Reactive Oxygen Species Production Through JAK2/STAT3 Signaling., HEPATOLOGY, 54(3):979-988(2011)

[PMID:21633967](https://pubmed.ncbi.nlm.nih.gov/21633967/)

Note: This product is for in vitro research use only and is not intended for use in humans or animals.