

## GATA1(Phospho-Ser310) Antibody

Catalog No: #11042



Package Size: #11042-1 50ul #11042-2 100ul #11042-4 25ul

Orders: order@signalwayantibody.com

Support: tech@signalwayantibody.com

## Description

Product Name	GATA1(Phospho-Ser310) Antibody
Host Species	Rabbit
Clonality	Polyclonal
Purification	Antibodies were produced by immunizing rabbits with synthetic phosphopeptide and KLH conjugates. Antibodies were purified by affinity-chromatography using epitope-specific phosphopeptide. Non-phospho specific antibodies were removed by chromatography using non-phosphopeptide.
Applications	WB IF
Species Reactivity	Hu Ms Rt
Specificity	The antibody detects endogenous level of GATA1 only when phosphorylated at serine 310.
Immunogen Type	Peptide-KLH
Immunogen Description	Peptide sequence around phosphorylation site of serine 310 (K-A-S(p)-G-K) derived from Human GATA1.
Target Name	GATA1
Modification	Phospho-Ser310
Other Names	GAT1; GATA1; GF-1; NF-E1;
Accession No.	Swiss-Prot: P15976NCBI Protein: NP_002040.1
Concentration	1.0mg/ml
Formulation	Supplied at 1.0mg/mL in phosphate buffered saline (without Mg <sup>2+</sup> and Ca <sup>2+</sup> ), pH 7.4, 150mM NaCl, 0.02% sodium azide and 50% glycerol.
Storage	Store at -20°C for long term preservation (recommended). Store at 4°C for short term use.

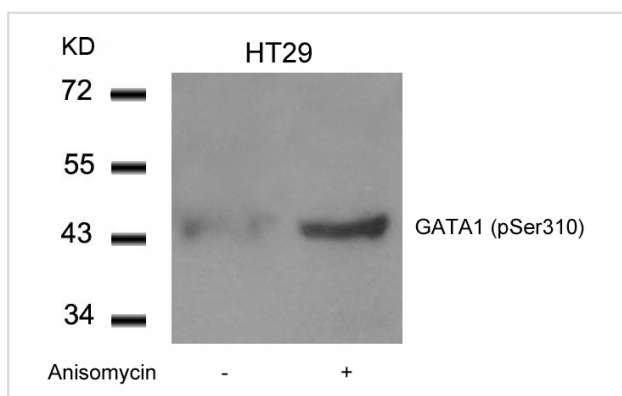
## Application Details

Predicted MW: 43kd

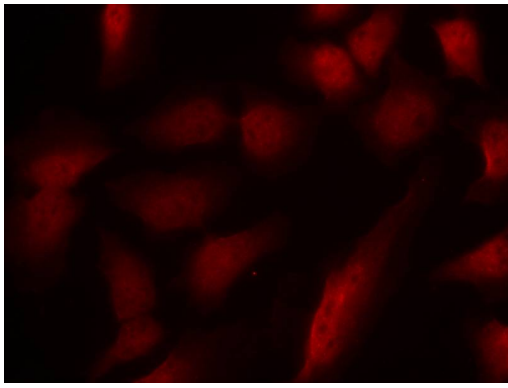
Western blotting: 1:500~1:1000

Immunofluorescence: 1:100~1:200

## Images



Western blot analysis of extracts from HT29 cells untreated or treated with Anisomycin using GATA1(Phospho-Ser310) Antibody #11042.



Immunofluorescence staining of methanol-fixed HeLa cells using GATA1(Phospho-Ser310) Antibody #11042.

## Background

GATA1 encodes a protein which belongs to the GATA family of transcription factors. The protein plays an important role in erythroid development by regulating the switch of fetal hemoglobin to adult hemoglobin. Mutations in this gene have been associated with X-linked dyserythropoietic anemia and thrombocytopenia.

Kadri Z, et al.(2005)Mol Cell Biol 2005 Sep; 25(17): 7412-22.

Note: This product is for in vitro research use only and is not intended for use in humans or animals.