

c-Jun(Phospho-Tyr170) Antibody

Catalog No: #11023

Package Size: #11023-1 50ul #11023-2 100ul #11023-4 25ul

Orders: order@signalwayantibody.com

Support: tech@signalwayantibody.com

Description

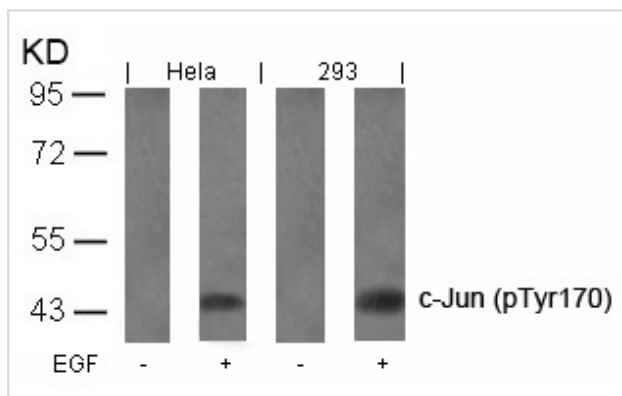
Product Name	c-Jun(Phospho-Tyr170) Antibody
Host Species	Rabbit
Clonality	Polyclonal
Purification	Antibodies were produced by immunizing rabbits with synthetic phosphopeptide and KLH conjugates. Antibodies were purified by affinity-chromatography using epitope-specific phosphopeptide. Non-phospho specific antibodies were removed by chromatography using non-phosphopeptide.
Applications	WB
Species Reactivity	Hu Ms Rt
Specificity	The antibody detects endogenous level of c-Jun only when phosphorylated at tyrosine 170.
Immunogen Type	Peptide-KLH
Immunogen Description	Peptide sequence around phosphorylation site of tyrosine 170 (P-V-Y(p)-A-N) derived from Human c-Jun.
Target Name	c-Jun
Modification	Phospho-Tyr170
Other Names	AH119; AP1; Jun A; c-Jun; p39
Accession No.	Swiss-Prot: P05412NCBI Protein: NP_002219.1
Concentration	1.0mg/ml
Formulation	Supplied at 1.0mg/mL in phosphate buffered saline (without Mg ²⁺ and Ca ²⁺), pH 7.4, 150mM NaCl, 0.02% sodium azide and 50% glycerol.
Storage	Store at -20°C for long term preservation (recommended). Store at 4°C for short term use.

Application Details

Predicted MW: 43kd

Western blotting: 1:500~1:1000

Images



Western blot analysis of extracts from HeLa and 293 cells untreated or treated with EGF using c-Jun(Phospho-Tyr170) Antibody #11023.

Background

Transcription factor that recognizes and binds to the enhancer heptamer motif 5'-TGA[CG]TCA-3'.

Barila D, et al. (2000) EMBO J.19(2): 273-281.

Binetruy B, et al. (1991) Nature. 351: 122-127.

Smeal T, et al. (1991) Nature. 354:494-496.

Derijard B, et al. (1994) Cell. 76:1025-1037.

Kyriakis J M, et al. (1994) Nature. 369: 156-160.

Note: This product is for in vitro research use only and is not intended for use in humans or animals.