

PTEN(Phospho-Ser380) Antibody

Catalog No: #11009



Package Size: #11009-1 50ul #11009-2 100ul #11009-4 25ul

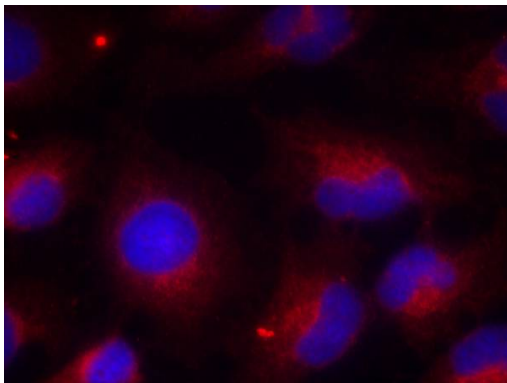
Orders: order@signalwayantibody.com

Support: tech@signalwayantibody.com

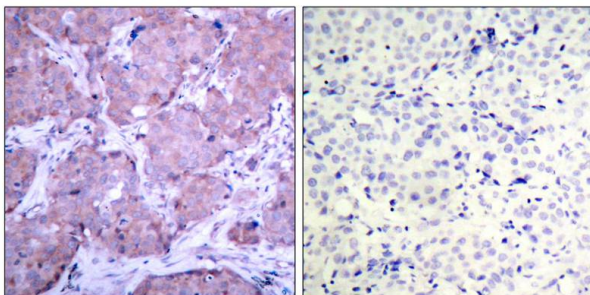
Description

Product Name	PTEN(Phospho-Ser380) Antibody
Host Species	Rabbit
Clonality	Polyclonal
Applications	IHC IF
Species Reactivity	Hu Ms Rt
Immunogen Type	Peptide-KLH
Target Name	PTEN
Modification	Phospho-Ser380
Other Names	BZS, DEC, GLM2, MHAM, TEP1
Concentration	1.0mg/ml

Images



Immunofluorescence staining of methanol-fixed HeLa cells using PTEN (phospho-Ser380) antibody (#11009, Red).



Immunohistochemical analysis of paraffin-embedded human breast carcinoma tissue using PTEN (phospho-Ser380) antibody (#11009).

Note: This product is for in vitro research use only and is not intended for use in humans or animals.