

MEK2(Phospho-Thr394) Antibody

Catalog No: #11008



Package Size: #11008-1 50ul #11008-2 100ul #11008-4 25ul

Orders: order@signalwayantibody.com

Support: tech@signalwayantibody.com

Description

Product Name	MEK2(Phospho-Thr394) Antibody
Host Species	Rabbit
Clonality	Polyclonal
Purification	Antibodies were produced by immunizing rabbits with synthetic phosphopeptide and KLH conjugates. Antibodies were purified by affinity-chromatography using epitope-specific phosphopeptide. Non-phospho specific antibodies were removed by chromatography using non-phosphopeptide.
Applications	WB IHC IF
Species Reactivity	Hu
Specificity	The antibody detects endogenous level of MEK2 only when phosphorylated at threonine 394.
Immunogen Type	Peptide-KLH
Immunogen Description	Peptide sequence around phosphorylation site of threonine 394 (P-G-T(p)-P-T) derived from Human MEK-2.
Target Name	MEK2
Modification	Phospho-Thr394
Other Names	ERK activator kinase 2; MAP kinase kinase 2; MAP2K2; MAPK/ERK kinase 2; MAPKK 2
Accession No.	Swiss-Prot: P36507NCBI Protein: NP_109587.1
Concentration	1.0mg/ml
Formulation	Supplied at 1.0mg/mL in phosphate buffered saline (without Mg ²⁺ and Ca ²⁺), pH 7.4, 150mM NaCl, 0.02% sodium azide and 50% glycerol.
Storage	Store at -20°C for long term preservation (recommended). Store at 4°C for short term use.

Application Details

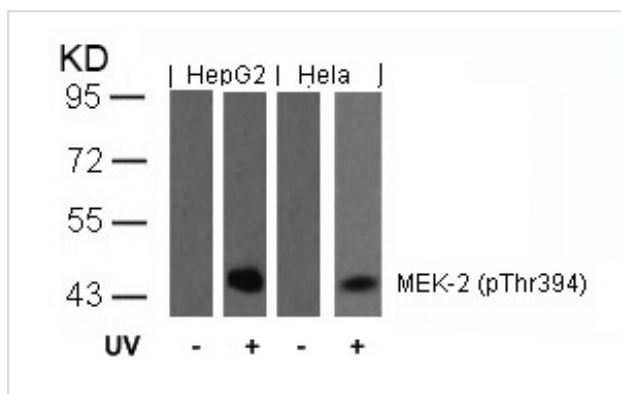
Predicted MW: 44kd

Western blotting: 1:500~1:1000

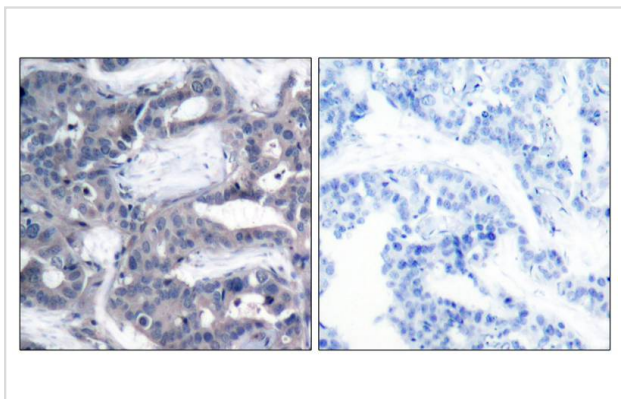
Immunohistochemistry: 1:50~1:100

Immunofluorescence: 1:100~1:200

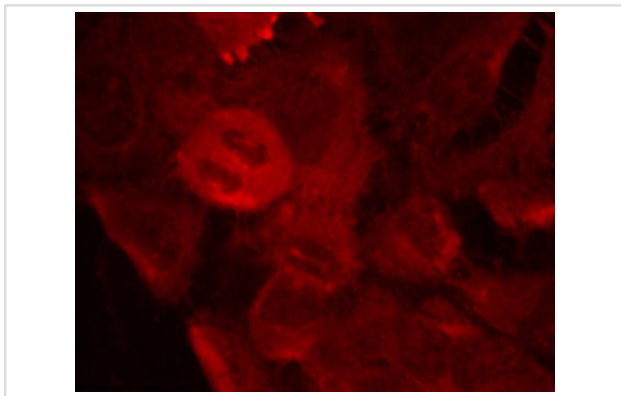
Images



Western blot analysis of extracts from HepG2 and HeLa cells untreated or treated with UV using MEK-2(Phospho-Thr394) Antibody #11008.



Immunohistochemical analysis of paraffin-embedded human breast carcinoma tissue using MEK-2(Phospho-Thr394) Antibody #11008(left) or the same antibody preincubated with blocking peptide(right).



Immunofluorescence staining of methanol-fixed HeLa cells using MEK-2(Phospho-Thr394) Antibody #11008.

Background

Catalyzes the concomitant phosphorylation of a threonine and a tyrosine residue in a Thr-Glu-Tyr sequence located in MAP kinases. Activates the ERK1 and ERK2 MAP kinases.

Crews C M, et al. (1992) *Science*. 258:478-480.

Alessi D R, et al. (1994) *EMBO J*. 13:1610-1619.

Rosen L B, et al. (1994) *Neuron*. 12:1207-1221.

Cowley S, et al. (1994) *Cell*. 77:841-852.

Note: This product is for in vitro research use only and is not intended for use in humans or animals.