

Raf1(Phospho-Ser259) Antibody

Catalog No: #11006



Package Size: #11006-1 50ul #11006-2 100ul #11006-4 25ul

Orders: order@signalwayantibody.com

Support: tech@signalwayantibody.com

Description

Product Name	Raf1(Phospho-Ser259) Antibody
Host Species	Rabbit
Clonality	Polyclonal
Purification	Antibodies were produced by immunizing rabbits with synthetic phosphopeptide and KLH conjugates. Antibodies were purified by affinity-chromatography using epitope-specific phosphopeptide. Non-phospho specific antibodies were removed by chromatography using non-phosphopeptide.
Applications	WB IHC
Species Reactivity	Hu Ms Rt
Specificity	The antibody detects endogenous level of Raf-1 only when phosphorylated at serine 259.
Immunogen Type	Peptide-KLH
Immunogen Description	Peptide sequence around phosphorylation site of serine 259 (S-T-S(p)-T-P) derived from Human Raf1.
Target Name	Raf1
Modification	Phospho-Ser259
Other Names	C-RAF; C-Raf; CRAF
Accession No.	Swiss-Prot: P04049NCBI Protein: NP_002871.1
Concentration	1.0mg/ml
Formulation	Supplied at 1.0mg/mL in phosphate buffered saline (without Mg ²⁺ and Ca ²⁺), pH 7.4, 150mM NaCl, 0.02% sodium azide and 50% glycerol.
Storage	Store at -20°C for long term preservation (recommended). Store at 4°C for short term use.

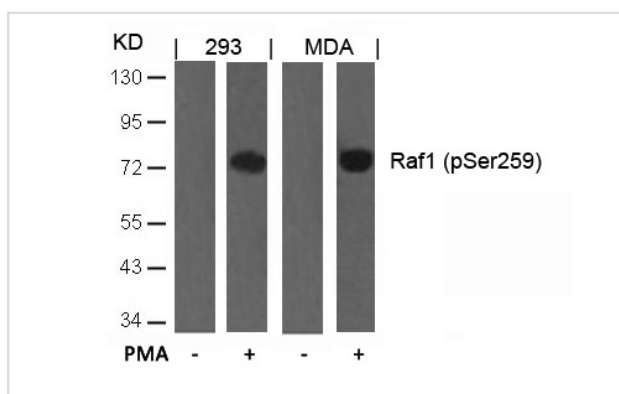
Application Details

Predicted MW: 73kd

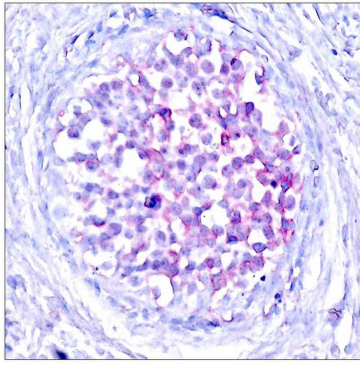
Western blotting: 1:500~1:1000

Immunohistochemistry: 1:50~1:100

Images



Western blot analysis of extracts from 293 and MDA cells untreated or treated with PMA using Raf1(Phospho-Ser259) Antibody #11006.



Immunohistochemical analysis of paraffin-embedded human breast carcinoma tissue using Raf1(Phospho-Ser259) Antibody #11006.

Background

Involved in the transduction of mitogenic signals from the cell membrane to the nucleus. Part of the Ras-dependent signaling pathway from receptors to the nucleus. Protects cells from apoptosis mediated by STK3.

Dougherty M K, et al. (2005) Mol Cell. 17(2): 215-224.

Hekman M, et al. (2005) FEBS Lett. 579(2): 464-468.

Avruch J, et al. (1994) Trends Biochem. Sci. 19, 279-283.

Chong H, et al. (2001) EMBO J. 20, 3716-3727.

King A J, et al. (1998) Nature. 396:180-183.

Published Papers

Zhi-Xin Qiu, Lei Wang, Juan Han et al., Prognostic impact of Raf-1 and p-Raf-1 expressions for poor survival rate in non-small cell lung cancer., Cancer Sci., 103(10):1774-1779(2012)

[PMID:22738312](https://pubmed.ncbi.nlm.nih.gov/22738312/)

Note: This product is for in vitro research use only and is not intended for use in humans or animals.