



SALIVARY C-REACTIVE PROTEIN

ELISA KIT (GENERATION II)

For Research Use Only
Not for use in Diagnostic Procedures

Item No. 1-2102, (Single) 96-Well Kit;
1-2102-5, (5-Pack) 480 Wells



101 Innovation Boulevard • Suite 302 • State College, PA 16803
1.800.790.2258 • support@salimetrics.com • salimetrics.com

TABLE OF CONTENTS

Intended Use	3
Introduction	3
Test Principle	4
Safety Precautions	4
General Kit Use Advice	5
Storage	6
Specimen Collection	6
Sample Handling and Preparation	7
Materials Supplied with Single Kit	8
Materials Needed But Not Supplied	9
Reagent Preparation	10
Procedure	11
Quality Control	13
Calculations	13
Typical Results	13
Limitations	14
Salivary CRP Example Ranges	15
Salivary CRP ELISA Kit Performance Characteristics	15
References	18
Seller's Limited Warranty	19



Intended Use

The Salimetrics® Salivary C-Reactive Protein ELISA Kit (Generation II) is an enzyme-linked immunoassay specifically designed and validated for the quantitative measurement of human CRP in oral fluid. It is not intended for diagnostic use. This assay kit was optimized for human salivary research and has not been validated for other human sample types, such as serum or plasma or samples from other species.

Please read the complete kit insert before performing this assay. Failure to follow kit procedure and recommendations for saliva collection and sample handling may result in unreliable values.

For further information about this kit, its application, or the procedures in this insert, please contact the technical service team at Salimetrics or your local sales representative.

Introduction

C-Reactive Protein (CRP) circulates in the blood plasma as a stable homopentamer and a prominent member of the acute-phase inflammatory proteins. CRP functions mainly in innate immune defense and levels increase in response to inflammation, infection, tissue damage, necrosis, malignancy and allergic reactions (1). CRP has diagnostic value as a marker of systemic inflammation in the body and as an independent risk factor for cardiovascular diseases in adults and children (2, 3).

CRP, also known as pentraxin 1 (PTX1), is a member of the pentraxin family which has several structurally related members. Most CRP is produced by hepatocytes in the liver induced principally by the inflammatory cytokine interleukin-6 (IL-6), but also by IL-1 β and TNF (4). CRP binds several targets including phosphocholine, a common constituent of polysaccharide coatings of bacterial pathogens and mammalian cell membranes. This allows CRP to function as an opsonin, facilitating phagocytosis of pathogens and dead or dying cells (4, 5) and trigger the classical complement pathway by activating C1q. CRP binding also can stimulate macrophage tumoricidal activity, and protect against septic shock (5). Another mechanism by which CRP interacts with the innate immune system is through its interaction with Fc γ receptors (Fc γ Rs) on myeloid cells, B lymphocytes, NK cells, and platelets (6).

Circulating CRP levels in humans are normally quite low, but they increase several hundred-fold during the acute-phase response. Elevated serum CRP levels have been associated with the presence of cardiovascular disease (7, 8). Numerous research studies investigating serum CRP and its relationship to other diseases have also been reported. These include hypertension, (9, 10) diabetes, (11, 12) cancer, (13) autoimmune disorders (14), obesity and metabolic syndrome (15, 16). Additional literature suggests possible links between oral health and chronic infection, inflammation, oxidative stress and heart disease (17),(18). Studies have also linked elevated serum CRP levels to oral contraceptive use (19, 20).



101 Innovation Boulevard • Suite 302 • State College, PA 16803
1.800.790.2258 • support@salimetrics.com • salimetrics.com

For CRP there is encouraging research that suggests salivary CRP may be more strongly associated with serum CRP than is true for other inflammatory markers. CRP is prohibitively large to pass from the circulation into the salivary glands by passive diffusion, and it is believed that small amounts of CRP enter whole saliva mainly as a component of the gingival crevicular fluid (GCF) or through salivary glands. Whole saliva is much easier to collect than GCF, which could make saliva the oral fluid of choice for routine assessment of CRP in clinical or field studies.

As with measurements of salivary cytokines, however, the question of local CRP production in the oral cavity must be considered, since it may obscure the relationship between blood and salivary levels and the interpretation of salivary CRP in relation to other analytes of interest. Although the majority of CRP is thought to originate from the liver, CRP and IL-6 mRNAs have been detected in gingival tissue samples from periodontitis patients and CRP gene expression has been correlated with IL-6 expression (21).

Several studies have examined the relationship between salivary and serum CRP. One study reported a moderate to strong association between CRP measured in saliva and in serum, while a second longitudinal study found that salivary and plasma CRP were moderately associated cross-sectionally and across two years (22, 23).

Test Principle

This is an indirect sandwich ELISA kit. A "sandwich" is formed when the pre-coated capture anti-CRP antibody present on the plate binds CRP in standards & samples, which is then bound by the anti-CRP detection antibody linked to horseradish peroxidase. After each incubation, unbound components are washed away. Bound anti-CRP Antibody Enzyme Conjugate is then added and the levels measured by the reaction of the horseradish peroxidase (HRP) enzyme to the substrate tetramethylbenzidine (TMB). This reaction produces a blue color. A yellow color is formed after stopping the reaction with an acidic solution. The optical density is read on a standard plate reader at 450 nm. The amount of CRP Antibody Enzyme Conjugate detected is directly proportional to the amount of CRP present in the sample (18).

Safety Precautions

Read Safety Data Sheets before handling reagents.

Hazardous Ingredients

Liquid Stop Solution is caustic; use with care. We recommend the procedures listed below for all kit reagents.

Handling

Follow good laboratory safety practices when handling kit reagents. Personal protective equipment is recommended including laboratory coats, gloves, and safety goggles. Wipe up



101 Innovation Boulevard • Suite 302 • State College, PA 16803
1.800.790.2258 • support@salimetrics.com • salimetrics.com

spills using appropriate absorbent materials while wearing protective clothing. Follow local regulations for disposal.

Emergency Exposure Measures

In case of contact, immediately wash skin or flush eyes with water for 15 minutes. Remove contaminated clothing. If inhaled, remove individual to fresh air. If individual experiences difficulty breathing call a physician.

The above information is believed to be accurate but is not all-inclusive. This information should be used only as a guide. Salimetrics will not be liable for accidents or damage resulting from misuse of product.

Safety Data Sheets are available by contacting Salimetrics at support@salimetrics.com (See www.salimetrics.com for alternative contact options).

General Kit Use Advice

- This kit uses break-apart microtiter strips. You may run less than a full plate. Unused wells must be stored at 2-8°C in the foil pouch with desiccant and used in the frame provided.
- Avoid microbial contamination of opened reagents. Salimetrics recommends using opened reagents within one month. Store all reagents at 2-8°C.
- The quantity of reagent provided with a single kit is sufficient for three partial runs. The volumes of wash buffer and enzyme conjugate prepared for assays using less than a full plate should be scaled down accordingly, keeping the same dilution ratio.
- Do not mix components from different lots of kits.
- We recommend saving all reagents until data analysis has confirmed a successful run to facilitate troubleshooting if necessary.
- Prior to sample addition, please label each strip to assure plate orientation and sample order when data is acquired on plate reader.
- To ensure highest quality assay results, pipetting of samples and reagents must be done as quickly as possible (without interruption) across the plate. Ideally, the process should be completed within 20 minutes or less.
- When using a multichannel pipette to add reagents, always follow the same sequence when adding all reagents so that the incubation time is the same for all wells.
- When running multiple plates, or multiple sets of strips, a standard curve must be run with each individual plate and/or set of strips.
- The temperature of the laboratory may affect assays. Salimetrics' kits have been validated at 68-74°F (20-23.3°C). Higher or lower temperatures may affect OD values.
- Routine calibration of pipettes and other equipment is critical for the best possible assay performance.
- When mixing plates during assay procedures, avoid speeds that spill the contents of the wells.



101 Innovation Boulevard • Suite 302 • State College, PA 16803
1.800.790.2258 • support@salimetrics.com • salimetrics.com

Storage

All unopened components of this kit are stable at 2-8°C until the kit's expiration date.

Specimen Collection

Avoid sample collection within 60 minutes after eating a major meal or within 12 hours after consuming alcohol. Acidic or high sugar foods can compromise assay performance by lowering sample pH and influencing bacterial growth. To minimize these factors, rinse mouth thoroughly with water 10 minutes before sample is collected.

Collect whole saliva by unstimulated passive drool. Donors may tilt the head forward, allowing the saliva to pool on the floor of the mouth, and then pass the saliva through the SalivaBio Collection Aid (SCA) into a polypropylene vial. Collection protocols/methods are available online at www.salimetrics.com or upon request.

Samples visibly contaminated with blood should be recollected. Samples may be screened for possible blood contamination (19,20) using our Blood Contamination EIA Kit (Item Nos. 1-1302/1-1302-5). Do not use dipsticks, which result in false positive values due to salivary enzymes.

Record the time and date of specimen collection.

CRP does not appear to be flow rate dependent in individuals with CRP levels in the normal range, based on the high correlation ($r(40) = 0.94$, $p < 0.001$, $n = 42$) between measurements in pg/mL and measurements corrected for flow rate. However, the effect of flow rate in individuals with higher levels of CRP has not been determined. It is therefore advisable to collect data on saliva flow in case the correction for flow rate should be necessary, or to allow for future testing of archived samples for additional biomarkers that may be sensitive to flow rate. We recommend you measure the amount of time needed to collect the desired volume of saliva, in order to determine the flow rate (mL/min). The measured concentration should then be multiplied by the flow rate in order to express the result as product measured per unit of time. Protocols for flow-rate conversion are available on request.



101 Innovation Boulevard • Suite 302 • State College, PA 16803
1.800.790.2258 • support@salimetrics.com • salimetrics.com

Sample Handling and Preparation

After collection, it is important to keep samples cold in order to avoid bacterial growth (and loss of CRP) in the specimen. Refrigerate sample within 30 minutes, and freeze at or below -20°C within 4 hours of collection. Samples may be stored at -20°C for up to 6 months. For long term storage, refer to the Salimetrics Collection and Handling Advice Booklet.

Do not add sodium azide to saliva samples as a preservative, as it may cause interference in the immunoassay.

On day of assay, thaw the saliva samples completely, vortex, and centrifuge at 1500 x g for 15 minutes. Freezing saliva samples will precipitate mucins. Centrifuging removes mucins and other particulate matter which may interfere with antibody binding and affect results. Samples should be at room temperature before making dilutions. Pipette clear sample into appropriate dilution tubes. Re-freeze saliva samples as soon as possible after running assay. Re-centrifuge saliva samples each time that they are thawed. Avoid multiple freeze-thaw cycles. CRP levels will drop significantly at 2-8°C beyond 8 hours, but they are minimally affected by freeze-thaw cycles.

Saliva samples must be diluted for this assay. See Procedure for details.



101 Innovation Boulevard • Suite 302 • State College, PA 16803
1.800.790.2258 • support@salimetrics.com • salimetrics.com

Materials Supplied with Single Kit

	Item	Quantity/Size
1	CRP Generation II ELISA Microtitre Break-Apart Plate Coated with mouse anti-human CRP antibodies.	1/96 well
2	CRP Generation II Standard 800 pg/mL formulated for stability when stored at 4°C. Prepare and serially dilute before use according to Reagent Preparation. Contains: CRP, buffer, preservative.	1 vial / 1 mL
3	CRP Generation II Controls High and Low. Contain: CRP, buffer, preservative.	2 vials / 500 µL ea.
4	CRP Generation II Antibody Enzyme Conjugate Concentrate. Dilute before use with assay diluent. (See step 7 of Procedure.) Contains: Goat anti-human CRP antibody conjugated to HRP, preservative.	1 vial / 100 µL
5	CRP Generation II Sample Diluent Ready to use. Contains: phosphate buffer, preservative.	1 bottle / 25 mL
6	Assay Diluent Contains: phosphate buffer, pH indicator, preservative.	1 bottle / 60 mL
7	Wash Buffer Concentrate 10X Dilute before use according to Reagent Preparation. Contains: phosphate buffer, detergent, preservative.	1 bottle / 100 mL
8	TMB Substrate Solution Non-toxic, ready to use.	1 bottle / 25 mL
9	Stop Solution	1 bottle / 12.5 mL
10	Adhesive Plate Covers	2



101 Innovation Boulevard • Suite 302 • State College, PA 16803
1.800.790.2258 • support@salimetrics.com • salimetrics.com

Materials Needed But Not Supplied

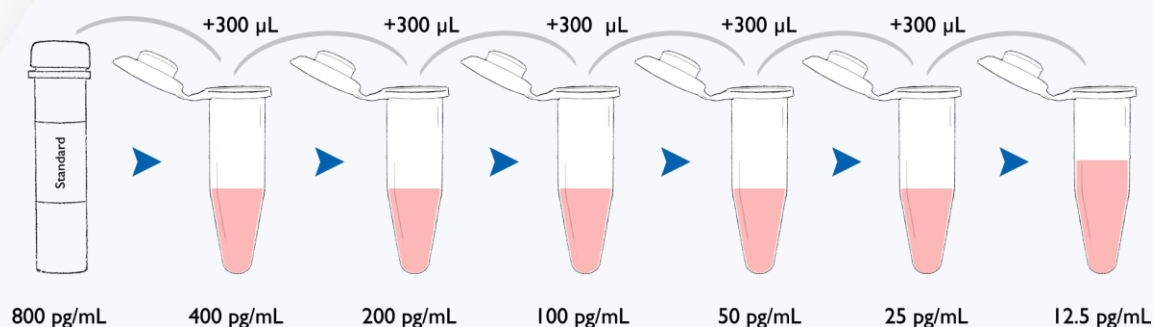
- Precision pipettes to deliver 70 μL , 150 μL , 250 μL , and 300 μL
- Precision multichannel pipette to deliver 50 μL and 100 μL
- Vortex
- Plate rotator with 0.08-0.17 inch orbit capable of 500 rpm
- Microplate reader with capabilities to read 450 nm and 620 to 630 nm
- Computer software for data reduction
- Reagent reservoirs
- Deionized water
- One disposable polypropylene tube to hold at least 14 mL
- Small disposable polypropylene tubes for dilution of standard & samples
- Pipette tips
- Serological pipette to deliver up to 14 mL
- Centrifuge capable of 1500 x g



101 Innovation Boulevard • Suite 302 • State College, PA 16803
1.800.790.2258 • support@salimetrics.com • salimetrics.com

Reagent Preparation

- Bring all reagents to room temperature and mix before use. A minimum of 1.5 hours is recommended for the 60 mL of Assay Diluent to come to room temperature.
- Bring Microtiter Plate to room temperature before use. ***It is important to keep the foil pouch with the plate strips closed until warmed to room temperature, as humidity may have an effect on the coated wells.***
- Prepare 1X wash buffer by diluting Wash Buffer Concentrate (10X) 10-fold with room-temperature deionized water (100 mL of Wash Buffer Concentrate (10X) to 900 mL of deionized water). ***Dilute only enough for current day's use and discard any leftover reagent.*** (If precipitate has formed in the concentrated wash buffer, it may be heated to 40°C for 15 minutes. Cool to room temperature before use in assay.)
- Prepare serial dilutions of the CRP Generation II Standard as follows:
 - Label six polypropylene microcentrifuge tubes or other small tubes 2 through 7.
 - Pipette 300 μ L of CRP Generation II Sample Diluent into tubes 2 through 7.
 - Serially dilute the standard 2X by adding 300 μ L of the 800 pg/mL standard (tube 1) to tube 2. Mix well.
 - After changing pipette tips, remove 300 μ L from tube 2 to tube 3. Mix well.
 - Continue for tubes 4, 5, 6 and 7.
 - The final concentrations of standards for tubes 1 through 7 are, respectively, 800 pg/mL, 400 pg/mL, 200 pg/mL, 100 pg/mL, 50 pg/mL, 25 pg/mL and 12.5 pg/mL. Standard concentrations in pmol/L are 7.6 pmol/L, 3.8 pmol/L, 1.9 pmol/L, 0.95 pmol/L, 0.48 pmol/L, 0.24 pmol/L, and 0.12 pmol/L, respectively.
 - CRP Generation II Sample Diluent is used as the Zero Standard.
- **Dilute CRP Generation II High Control and Low Control 2x by pipetting 250 μ L of each into 250 μ L of CRP Sample Diluent, respectively.**



101 Innovation Boulevard • Suite 302 • State College, PA 16803
1.800.790.2258 • support@salimetrics.com • salimetrics.com

Procedure

Step 1: Read and prepare reagents according to the Reagent Preparation section before beginning assay. Determine your plate layout. Here is a suggested layout. (Standards, controls, and saliva samples should be assayed in duplicate.)

	1	2	3	4	5	6	7	8	9	10	11	12
A	800 Std	800 Std	Ctrl-L	Ctrl-L								
B	400 Std	400 Std	Ctrl-H	Ctrl-H								
C	200 Std	200 Std	SMP-1	SMP-1								
D	100 Std	100 Std	SMP-2	SMP-2								
E	50 Std	50 Std	SMP-3	SMP-3								
F	25 Std	25 Std	SMP-4	SMP-4								
G	12.5 Std	12.5 Std	SMP-5	SMP-5								
H	0 Std	0 Std	SMP-6	SMP-6								

Step 2: Keep the desired number of strips in the strip holder and place the remaining strips back in the foil pouch. Reseal the foil pouch with unused wells and desiccant. Store at 2-8°C.

Step 3: Pipette 14 mL of Assay Diluent into the disposable tube. (Scale down proportionally if using less than the entire plate.) Set aside for Step 7.

Step 4:

- Dilute saliva 2X in CRP Generation II Sample Diluent using 150 µL saliva to 150 µL of CRP Generation II Sample Diluent.

Do not dilute samples in Assay Diluent.

Step 5:

- Pipette 100 µL of Standards, diluted Controls (see page 10) and diluted saliva samples into appropriate wells.
- Pipette 100 µL of CRP Generation II Sample Diluent into two wells to serve as the Zero Standard.

Place adhesive cover provided over plate. Mix plate on a plate rotator ***continuously*** at 500 rpm for 2 hours at room temperature.



101 Innovation Boulevard • Suite 302 • State College, PA 16803
1.800.790.2258 • support@salimetrics.com • salimetrics.com

Step 6: Wash the plate 4 times with 1X wash buffer. A plate washer is recommended. However, washing may be done by gently squirting wash buffer into each well with a squirt bottle, or by pipetting 300 μ L of wash buffer into each well and then discarding the liquid over a sink. After each wash, the plate should be thoroughly blotted on paper towels before turning upright. If using a plate washer, blotting is still recommended after the last wash.

Step 7: Dilute the CRP Generation II Antibody Enzyme Conjugate 1:200 by adding 70 μ L of the conjugate to the 14 mL tube of Assay Diluent. (Scale down proportionally if not using the entire plate.) Conjugate tube may be centrifuged for a few minutes to bring the liquid down to the tube bottom. Immediately mix the diluted conjugate solution and add 100 μ L to each well using a multichannel pipette.

Step 8: Place adhesive cover provided over plate. Mix plate on a plate rotator *continuously* at 500 rpm for 2 hours at room temperature.

Step 9: Wash the plate 4 times with 1X wash buffer. A plate washer is recommended. However, washing may be done by gently squirting wash buffer into each well with a squirt bottle, or by pipetting 300 μ L of wash buffer into each well and then discarding the liquid over a sink. After each wash, the plate should be thoroughly blotted on paper towels before turning upright. If using a plate washer, blotting is still recommended after the last wash.

Step 10: Add 100 μ L of TMB Substrate Solution to each well with a multichannel pipette.

Step 11. Incubate the plate in the dark (covered) at room temperature for 30 minutes, mixing for 5 minutes on a plate rotator at 500 rpm.

Step 12: Add 50 μ L of Stop Solution with a multichannel pipette.

Step 13:

- Mix on a plate rotator for 3 minutes at 500 rpm. If green color remains, continue mixing until green color turns to yellow. Be sure all wells have turned yellow.

Caution: Spillage may occur if mixing speed exceeds 600 rpm.

- Wipe off bottom of plate with a water-moistened, lint-free cloth and wipe dry.
- Read in a plate reader at 450 nm. Read plate within 10 minutes of adding Stop Solution. (For best results, a secondary filter correction at 620 to 630 nm is recommended.)



Quality Control

The Salimetrics' High and Low CRP Generation II Controls should be run with each assay. The control ranges established at Salimetrics are to be used as a guide. Each laboratory should establish its own range. Variations between laboratories may be caused by differences in techniques and instrumentation.

Calculations

1. Compute the average optical density (OD) for all duplicate wells.
2. Plot the reference standard concentrations on the X axis and the corresponding average optical density on the Y axis.
3. Using the average optical density values of the controls and saliva samples, determine the corresponding concentration of CRP in pg/mL from the standard curve. We recommend using a non-linear regression curve fit.
4. Multiply the calculated concentrations of the **saliva samples only** by the dilution factor of 2 to obtain final CRP sample concentrations in pg/mL.
5. Samples (diluted 2X) with CRP values greater than 800 pg/mL (or >1600 pg/mL after multiplying by the dilution factor of 2) should be diluted further with CRP Generation II Sample Diluent and rerun for accurate results. If a dilution of the sample is used, multiply the results by the additional dilution factor.

A new Standard Curve must be run with each full or partial plate.

Typical Results

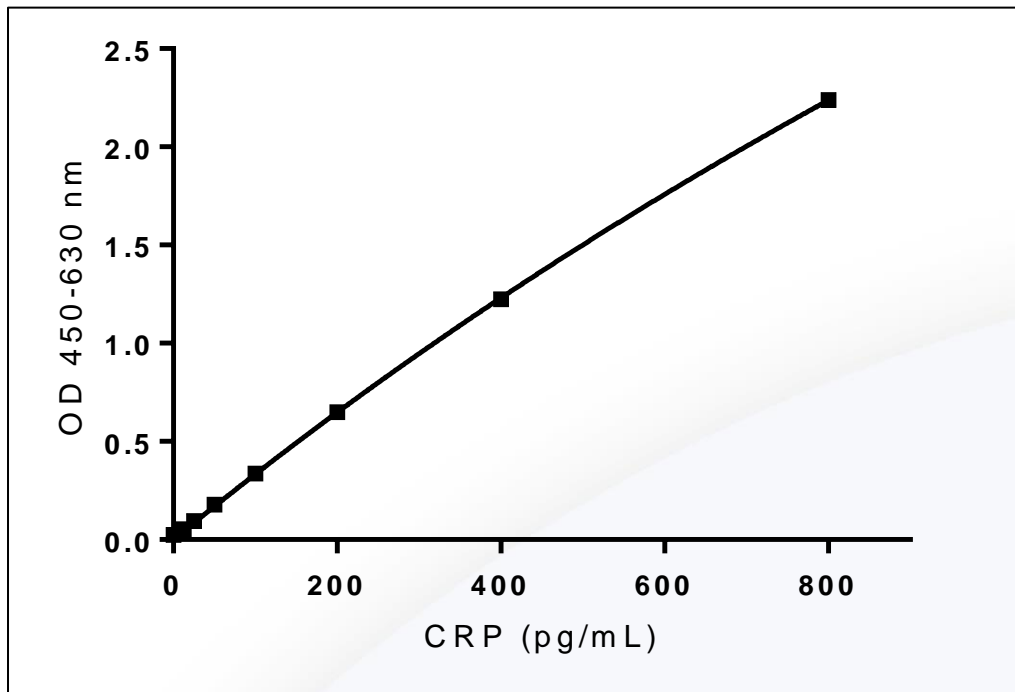
The results shown below are for illustration only and should not be used to calculate results from another assay.

Well	Standard	Average OD	CRP (pg/mL)
A1,A2	S1	2.365	800
B1,B2	S2	1.311	400
C1,C2	S3	0.689	200
D1,D2	S4	0.36	100
E1,E2	S5	0.195	50
F1,F2	S6	0.102	25
G1,G2	S7	0.057	12.5
H1,H2	Zero	0.023	0



101 Innovation Boulevard • Suite 302 • State College, PA 16803
1.800.790.2258 • support@salimetrics.com • salimetrics.com

Example: CRP Generation II Non-Linear Curve Fit



Limitations

- Samples (diluted 2X) with CRP values greater than 800 pg/mL (or >1600 pg/mL after multiplying by the dilution factor of 2) should be diluted further with CRP Sample Diluent and rerun for accurate results. If a dilution of the sample is used, multiply the results by the additional dilution factor.
- See "Specimen Collection" recommendations to ensure proper collection of saliva specimens and to avoid interfering substances.
- Samples collected with sodium azide are unsuitable for this assay.
- Any quantitative results indicating abnormal CRP levels should be followed by additional testing and evaluation.

Salivary CRP Generation II Example Ranges* (16)

Group	N	Range (pg/mL)	Mean (pg/mL)	Std Dev of Mean (pg/mL)
Adults	62	62.34-3072.55	733.84	695.24

*To be used as a guide only. Each laboratory should establish its own range.

Salivary C-Reactive Protein EIA Kit (Generation II) Performance Characteristics

Precision

The intra-assay precision was determined from the mean of 20 replicates each.

Saliva Sample	N	Mean (pg/mL)	Standard Deviation (pg/mL)	Coefficient of Variation (%)
1	20	20.86	1.39	7%
2	20	76.07	1.84	2%
3	20	242.46	7.24	3%
4	20	525.85	10.99	2%
5	20	614.44	12.83	2%

The inter-assay precision was determined from the mean of average duplicates for 10 separate runs.

Saliva Sample	N	Mean (pg/mL)	Standard Deviation (pg/mL)	Coefficient of Variation (%)
1	20	20.34	0.79	4%
2	20	78.65	1.55	2%
3	20	257.92	8.50	3%
4	20	528.69	12.85	2%
5	20	625.62	13.86	2%



101 Innovation Boulevard • Suite 302 • State College, PA 16803
1.800.790.2258 • support@salimetrics.com • salimetrics.com

Recovery

Six saliva samples containing different levels of an endogenous CRP were spiked with known quantities of CRP and assayed.

Sample	Endogenous (mg/dL)	Added (pg/ml)	Expected (pg/ml)	Observed (pg/ml)	% Recovery
1	20.75	40.0	59.2	57.03	96%
		20.4	39.6	36.66	92%
		10.6	29.9	28.09	94%
2	61.21	39.97	95.31	95.71	100%
		20.36	75.70	75.62	100%
		10.64	65.98	62.76	95%
3	156.45	-	-	-	-
		20.36	165.64	157.08	95%
		10.64	155.93	147.44	95%

Sensitivity

Analytical Sensitivity

The lower limit of detection (LLOD) was determined by interpolating the mean optical density plus 2 SDs for 10 sets of duplicates at the zero pg/mL standard. The minimal concentration of CRP that can be distinguished from zero is 0.042 pg/mL.

Functional Sensitivity

The functional sensitivity or lower limit of quantification (LLOQ) was determined by assaying 60 saliva samples at a concentration level resulting in a CV of approximately 20%. The functional sensitivity of the Salivary CRP ELISA Assay kit (Generation II) is 19.44 pg/mL when sample is diluted two-fold.



101 Innovation Boulevard • Suite 302 • State College, PA 16803
1.800.790.2258 • support@salimetrics.com • salimetrics.com

Sample Dilution Recovery

Two samples were serially diluted with CRP Sample Diluent and assayed.

Saliva Sample	Dilution Factor	Expected (pg/mL)	Observed (pg/mL)	Recovery (%)
1			73.86	
	1:2	39.93	36.63	99%
	1:4	18.47	17.86	97%
	1:8	9.23	10.92	118%
2			207.52	
	1:2	103.76	119.40	115%
	1:4	51.88	60.28	116%
	1:8	12.97	31.21	120%

Antibody Specificity

Compound	Spiked Concentration (pg/mL)	% Cross-reactivity in Salivary CRP ELISA
Human Pentraxin 2/SAP	10,000	ND
Human Pentraxin 3/TSG-14	10,000	ND
Human Albumin	10,000	ND
Human Alpha 1-Antitrypsin	10,000	ND
Lysozyme	10,000	ND
Human IL-6	10,000	ND

ND = None detected (OD <0.004)



101 Innovation Boulevard • Suite 302 • State College, PA 16803
1.800.790.2258 • support@salimetrics.com • salimetrics.com

References

1. Ebersole JL, Cappelli D. Acute-phase reactants in infections and inflammatory diseases. *Periodontol* 2000. 2000;23:19-49.
2. Cook DG, Mendall MA, Whincup PH, Carey IM, Ballam L, Morris JE, et al. C-reactive protein concentration in children: relationship to adiposity and other cardiovascular risk factors. *Atherosclerosis*. 2000;149(1):139-50.
3. Ridker PM, Buring JE, Cook NR, Rifai N. C-reactive protein, the metabolic syndrome, and risk of incident cardiovascular events: an 8-year follow-up of 14 719 initially healthy American women. *Circulation*. 2003;107(3):391-7.
4. Volanakis JE. Human C-reactive protein: expression, structure, and function. *Mol Immunol*. 2001;38(2-3):189-97.
5. Mortensen RF, Zhong W. Regulation of phagocytic leukocyte activities by C-reactive protein. *J Leukoc Biol*. 2000;67(4):495-500.
6. Nimmerjahn F, Ravetch JV. FcγR in health and disease. *Curr Top Microbiol Immunol*. 2011;350:105-25.
7. Tracy RP, Lemaitre RN, Psaty BM, Ives DG, Evans RW, Cushman M, et al. Relationship of C-reactive protein to risk of cardiovascular disease in the elderly. Results from the Cardiovascular Health Study and the Rural Health Promotion Project. *Arterioscler Thromb Vasc Biol*. 1997;17(6):1121-7.
8. Danesh J, Collins R, Appleby P, Peto R. Association of fibrinogen, C-reactive protein, albumin, or leukocyte count with coronary heart disease: meta-analyses of prospective studies. *JAMA*. 1998;279(18):1477-82.
9. Sesso HD, Buring JE, Rifai N, Blake GJ, Gaziano JM, Ridker PM. C-reactive protein and the risk of developing hypertension. *JAMA*. 2003;290(22):2945-51.
10. Blake GJ, Rifai N, Buring JE, Ridker PM. Blood pressure, C-reactive protein, and risk of future cardiovascular events. *Circulation*. 2003;108(24):2993-9.
11. Pradhan AD, Manson JE, Rifai N, Buring JE, Ridker PM. C-reactive protein, interleukin 6, and risk of developing type 2 diabetes mellitus. *JAMA*. 2001;286(3):327-34.
12. Dehghan A, Kardys I, de Maat MP, Uitterlinden AG, Sijbrands EJ, Bootsma AH, et al. Genetic variation, C-reactive protein levels, and incidence of diabetes. *Diabetes*. 2007;56(3):872-8.
13. Erlinger TP, Platz EA, Rifai N, Helzlsouer KJ. C-reactive protein and the risk of incident colorectal cancer. *JAMA*. 2004;291(5):585-90.
14. Du Clos TW. C-reactive protein as a regulator of autoimmunity and inflammation. *Arthritis Rheum*. 2003;48(6):1475-7.
15. Devaraj S, Siegel D, Jialal I. Statin therapy in metabolic syndrome and hypertension post-JUPITER: what is the value of CRP? *Curr Atheroscler Rep*. 2011;13(1):31-42.
16. Luna RC, do Nascimento CC, Ascutti LS, Franceschini Sdo C, Filizola RG, Diniz Ada S, et al. Relation between glucose levels, high-sensitivity C-reactive protein (hs-CRP), body mass index (BMI) and serum and dietary retinol in elderly in population-based study. *Arch Gerontol Geriatr*. 2012;54(3):462-8.
17. Nam K, Jeon Y, Kim TK, Kim KB, Hwang HY, Cho YJ. Intraoperative transfusion and an increased preoperative C-reactive protein level are associated with higher mortality after off-pump coronary artery bypass grafting. *J Thorac Cardiovasc Surg*. 2019.
18. Tonetti MS, D'Aiuto F, Nibali L, Donald A, Storry C, Parkar M, et al. Treatment of periodontitis and endothelial function. *The New England journal of medicine*. 2007;356(9):911-20.
19. Raitakari M, Mansikkaniemi K, Marniemi J, Viikari JS, Raitakari OT. Distribution and determinants of serum high-sensitive C-reactive protein in a population of young adults: The Cardiovascular Risk in Young Finns Study. *J Intern Med*. 2005;258(5):428-34.



101 Innovation Boulevard • Suite 302 • State College, PA 16803
1.800.790.2258 • support@salimetrics.com • salimetrics.com

20. van Rooijen M, Hansson LO, Frostegard J, Silveira A, Hamsten A, Bremme K. Treatment with combined oral contraceptives induces a rise in serum C-reactive protein in the absence of a general inflammatory response. *J Thromb Haemost.* 2006;4(1):77-82.
21. Lu Q, Jin L. Human gingiva is another site of C-reactive protein formation. *J Clin Periodontol.* 2010;37(9):789-96.
22. Ouellet-Morin I, Danese A, Williams B, Arseneault L. Validation of a high-sensitivity assay for C-reactive protein in human saliva. *Brain, behavior, and immunity.* 2011;25(4):640-6.
23. Out D, Hall RJ, Granger DA, Page GG, Woods SJ. Assessing salivary C-reactive protein: longitudinal associations with systemic inflammation and cardiovascular disease risk in women exposed to intimate partner violence. *Brain, behavior, and immunity.* 2012;26(4):543-51.

Seller's Limited Warranty

"Seller warrants that all goods sold hereunder will be free from defects in material and workmanship. Upon prompt notice by Buyer of any claimed defect, which notice must be sent within thirty (30) days from date such defect is first discovered and within three months from the date of shipment, Seller shall, at its option, either repair or replace the product that is proved to Seller's satisfaction to be defective. All claims should be submitted in written form. This warranty does not cover any damage due to accident, misuse, negligence, or abnormal use. Liability, in all cases, will be limited to the purchased cost of the kit.

It is expressly agreed that this limited warranty shall be in lieu of all warranties of fitness and in lieu of the warranty of merchantability. Seller shall not be liable for any incidental or consequential damages that arise out of the installation, use or operation of Seller's product or out of the breach of any express or implied warranties."

Salimetrics, LLC
 5962 La Place Court, Suite 275
 Carlsbad, CA 92008, USA
 (T) 760.448.5397
 (F) 814.234.1608
 800-790-2258 (USA & Canada only)
www.salimetrics.com
support@salimetrics.com

Salimetrics, LLC
 101 Innovation Blvd., Suite 302
 State College, PA 16803, USA
 (T) 814.234.2617
 (F) 814.234.1608
 800-790-2258 (USA & Canada only)
www.salimetrics.com
support@salimetrics.com

Updated: July 10, 2019



101 Innovation Boulevard • Suite 302 • State College, PA 16803
 1.800.790.2258 • support@salimetrics.com • salimetrics.com