

INTENDED USE

The MagCelect™ Rat CD4⁺ T Cell Isolation Kit is designed to isolate CD4⁺ T cells via a negative selection principle. The resulting cell preparation is highly enriched with CD4⁺ T cells. Typical recovery of the targeted cell population ranges from 35-60% and the purity of recovered CD4⁺ T cells ranges from 80-90%.

BACKGROUND

R&D Systems® MagCelect™ products are designed for the isolation of cells in a "liquid phase". MagCelect™ technology is based on the use of ferrofluids or magnetic nanoparticles that have no magnetic memory (superparamagnetic) and behave like colloidal particles. This feature allows the ferrofluids to remain in solution without the need for mixing and additionally allows for efficient diffusion kinetics during the binding reaction. The proprietary manufacturing technology of MagCelect™ Ferrofluids generates particles with higher ligand binding capacity per mass compared to many other larger diameter magnetic particles.

PRINCIPLE OF SELECTION

A mononuclear cell suspension is first incubated with the Rat CD4⁺ T Cell Biotinylated Antibody Cocktail that targets the unwanted cells. MagCelect™ Streptavidin (SA) Ferrofluid is added to the reaction that allows the SA coated nanoparticles to interact with the cells tagged with the monoclonal antibodies. The tube containing the cell suspension is then placed within a magnetic field. Magnetically tagged cells will migrate toward the magnet (unwanted cell fraction), leaving the untagged cells or desired cell population in suspension to be harvested by aspiration while the tube remains in the magnetic field. The enriched cell preparation is then available for a variety of applications including tissue culture, immune status monitoring and flow cytometry.

MATERIALS PROVIDED & STORAGE CONDITIONS

Store the unopened kit at 2-8 °C. Do not use past kit expiration date. **DO NOT FREEZE.**

The kit contains sufficient reagents to process 1x10⁹ total cells.

PART	PART #	DESCRIPTION	STORAGE OF OPENED/DILUTED MATERIAL
Rat CD4 ⁺ T Cell Biotinylated Antibody Cocktail	860465	1.0 mL of biotinylated antibody cocktail in a phosphate buffered solution containing BSA and preservative.	May be stored 2-8 °C when handled aseptically.*
Streptavidin Ferrofluid	860127	1.25 mL of SA-coated nanoparticles in a solution containing BSA and preservative.	
10X Buffer	860040	10 mL of a 10X concentrated buffer.	May be stored for up to 24 hours at 2-8 °C after dilution.*

* Provided this is within the expiration date of the kit.

OTHER SUPPLIES REQUIRED

- MagCelect™ Magnet (R&D Systems®, Catalog # MAG997)
- Mouse Erythrocyte Lysing Kit (R&D Systems®, Catalog # WL2000)
- 12 x 75 mm (5.0 mL) or 17 x 100 mm (15 mL) polystyrene round bottom tubes
- 15 mL conical centrifuge tubes
- Sterile Pasteur pipettes or transfer pipettes
- Sterile deionized or distilled water
- Hanks' BSS or equivalent
- Bovine serum

REAGENT PREPARATION

Prepare 17 mL of 1X MagCollect™ Buffer for each 2×10^8 cells to be processed by mixing 1.7 mL of 10X Buffer with 15.3 mL sterile deionized or distilled water. **The buffer must be kept cold (2-8 °C) for the following procedures.**

CELL PREPARATION

1. Gently tease apart the rat spleen(s) in order to generate a single cell suspension in Hanks' BSS (or other preferred media) supplemented with 10% bovine serum. To remove cell clumps and/or debris pass the suspended cells through a 40-70 μm nylon cell strainer.
2. Wash the cells once by filling a 15 or 50 mL centrifuge tube with Hanks' BSS + 10% serum and spinning the cells for 10 minutes at 200 x g (use a 50 mL tube when processing more than 2 spleens).
3. Decant the supernatant, disrupt the cell pellet by "racking" the tube, resuspend the cells in M-Lyse Buffer from R&D Systems®' Mouse Erythrocyte Lysing Kit (Catalog # WL2000) that has been diluted to 1X strength with sterile deionized or distilled water and quickly vortex the tube (using 2.0 mL of 1X M-Lyse Buffer per processed spleen is recommended).
4. Incubate the cells for 10 minutes at room temperature and then fill the tube with 1X Wash Buffer from the Lysing kit.
Note: *The wash buffer must also be diluted with sterile water to 1X strength prior to use.*
5. Spin the cells for 10 minutes at 200 x g and then resuspend the cells in a small volume of cold 1X MagCollect™ Buffer.
6. Perform a cell count and then adjust the cell concentration to 2×10^8 cells per mL with cold 1X MagCollect™ Buffer.
7. Continue the cell selection by referring to step # 1 of the Cell Selection Procedure.

CELL SELECTION PROCEDURE

This procedure is for processing 2×10^8 total cells using 5.0 mL tubes and the MagCollect™ Magnet. For processing other cell numbers, refer to the Technical Hints section of this insert. Cells and reagents should be kept cold using an ice bath or a refrigerator. **Reaction incubations must be carried out at 2-8 °C in a refrigerator and not in an ice bath in order to avoid excessively low temperatures that can slow the kinetics of the optimized reactions.**

1. Prepare a single cell suspension of rat leukocytes by traditional methods or by following the instructions outlined above in the Cell Preparation section of this insert. Cells must be suspended in **cold** 1X MagCollect™ Buffer prior to beginning the procedure and be at a cell density of 2×10^8 cells/mL.
2. Transfer 2×10^8 cells (1.0 mL volume) into a 15 mL polystyrene tube and then add 200 μL of Rat CD4⁺ T Cell Biotinylated Antibody Cocktail. Gently mix the cell-antibody suspension, avoiding bubble formation, and incubate at 2-8 °C in a refrigerator for 15 minutes.
3. At the end of the incubation period, wash the cell suspension by adding 9.0 mL of cold 1X MagCollect™ Buffer and centrifuge at 300 x g for 8 minutes. Completely remove the supernatant and resuspend the cell pellet by gently pipetting 1.0 mL of cold 1X MagCollect™ Buffer into the tube. Transfer the cell suspension to a 5.0 mL reaction tube.
4. Add 250 μL of Streptavidin Ferrofluid to the cell suspension, mix gently and incubate at 2-8 °C in a refrigerator for 15 minutes.
5. At the end of the incubation period, bring the volume of the reaction in the tube to 3.0 mL by adding 1.75 mL of 1X MagCollect™ Buffer. Mix gently to ensure that all reactants in the tube are in suspension.
6. Place the reaction tube in the MagCollect™ Magnet that has been positioned horizontally to accommodate the 5.0 mL tubes and incubate for 8 minutes at room temperature. Magnetically tagged cells will migrate toward the magnet (these are the unwanted cells), leaving the untouched desired cells in suspension.
7. Recovery of the desired cells is achieved as follows: While the tube is in the magnet, using a sterile Pasteur pipette or transfer pipette, **carefully aspirate** all of the reaction suspension and place it in a new 5.0 mL tube. Remove the tube containing the magnetically trapped cells from the magnet, and discard.
8. To ensure that all of the magnetic nanoparticles have been removed, repeat the magnetic depletion (steps 5-7) with the new tube containing the recovered cells. The suspension obtained at the end of these steps is the final depleted cell fraction containing the desired enriched CD4⁺ T Cells. The cells are now ready for counting and further downstream applications.

PRECAUTION

Some components of this kit contain sodium azide, which may react with lead and copper plumbing to form explosive metallic azides. Flush with large volumes of water during disposal.

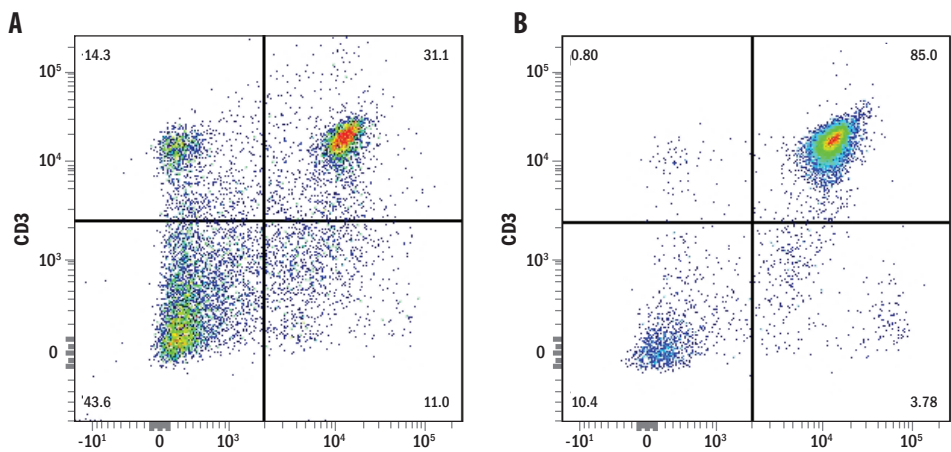
TECHNICAL HINTS

- If sterile cells are required following cell selection, the entire procedure should be carried out in a laminar flow hood to maintain sterile conditions. Use sterile equipment when pipetting reagents that will be reused at a later date.
- Avoid antibody capping on cell surfaces and non-specific cell tagging by working quickly, keeping cells and solutions cold through the use of pre-cooled solutions and by adhering to the incubation times and temperatures specified in the protocol. Increased temperature and prolonged incubation times may lead to non-specific cell labeling thus lowering cell purity and yield.
- When processing different numbers of cells, observe the following guidelines: keep the antibody cocktail and ferrofluid incubation times and temperatures the same.
- When processing 2×10^8 cells or fewer, use the 12 x 75 mm (5.0 mL) tubes with the MagCollect™ Magnet horizontally positioned to accommodate up to six 5.0 mL tubes. **Do not process more than 2×10^8 cells in each 5.0 mL tube and do not exceed a total reaction volume of 3.0 mL in each tube. Reaction volume adjustments must be made using 1X MagCollect™ Buffer just prior to the magnetic separation step.**
- When processing greater than 2×10^8 cells, use the 17 x 100 mm (15 mL) tubes with the MagCollect™ Magnet vertically positioned to accommodate up to two 15 mL tubes. **Do not process more than 6×10^8 cells in each 15 mL tube and do not exceed a total reaction volume of 9.0 mL in each tube.** When using this larger tube, increase the reaction volume before the magnetic separation step according to the following formula: 3.0 mL for each 2×10^8 cells processed. Also increase the magnetic incubation time described in step #6 to 10 minutes. **Reaction volume adjustments must be made using 1X MagCollect™ Buffer just prior to the magnetic separation step.**

Recommended quantities to be used in steps 2-4 of the Cell Selection Procedure (2×10^8 is recommended).

Number of Cells in Starting Preparation	5×10^7	1×10^8	2×10^8
Reaction Volume	1.0 mL	1.0 mL	1.0 mL
Rat CD4 ⁺ T Cell Biotinylated Antibody Cocktail	50 µL	100 µL	200 µL
Streptavidin Ferrofluid	125 µL	175 µL	250 µL

DATA EXAMPLE



Rat splenocytes before (A) and after (B) isolation of CD4⁺ T cells using the MagCollect™ Rat CD4⁺ T cell Isolation Kit. Dot plots reflect all viable cells stained with PE-conjugated anti-rat CD3 and APC-conjugated anti-rat CD4. Purity of isolated cells for this experiment was 85.8%.