

DESCRIPTION

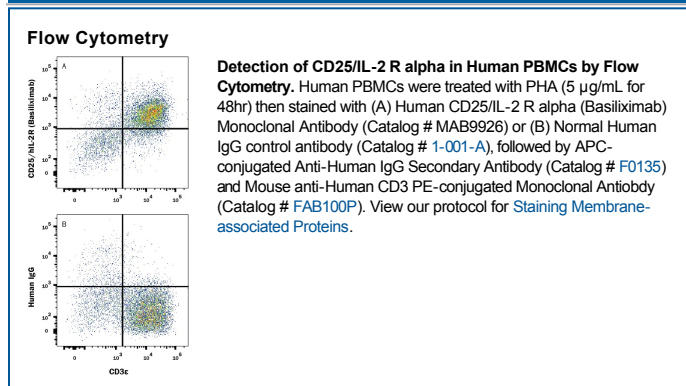
Species Reactivity	Human
Specificity	Detects Human CD25/IL-2 R α based on Basiliximab therapeutic antibody.
Source	Recombinant Monoclonal Human IgG ₁ Clone # Hu107
Purification	Protein A or G purified from cell culture supernatant
Immunogen	Human CD25/IL-2 R α
Formulation	Lyophilized from a 0.2 μ m filtered solution in PBS with Trehalose. See Certificate of Analysis for details. *Small pack size (-SP) is supplied either lyophilized or as a 0.2 μ m filtered solution in PBS.

APPLICATIONS

Please Note: Optimal dilutions should be determined by each laboratory for each application. General Protocols are available in the Technical Information section on our website.

	Recommended Concentration	Sample
Flow Cytometry	0.25 μ g/10 ⁶ cells	See Below
CyTOF-ready	Ready to be labeled using established conjugation methods. No BSA or other carrier proteins that could interfere with conjugation.	

DATA



PREPARATION AND STORAGE

Reconstitution	Reconstitute at 0.5 mg/mL in sterile PBS.
Shipping	The product is shipped at ambient temperature. Upon receipt, store it immediately at the temperature recommended below. *Small pack size (-SP) is shipped with polar packs. Upon receipt, store it immediately at -20 to -70 °C
Stability & Storage	Use a manual defrost freezer and avoid repeated freeze-thaw cycles. <ul style="list-style-type: none"> ● 12 months from date of receipt, -20 to -70 °C as supplied. ● 1 month, 2 to 8 °C under sterile conditions after reconstitution. ● 6 months, -20 to -70 °C under sterile conditions after reconstitution.

BACKGROUND

Basiliximab is a biosimilar directed against the extracellular domain of CD25/IL-2 R α . This product can be used as the standard in pharmacokinetic (PK) assays.