

DESCRIPTION

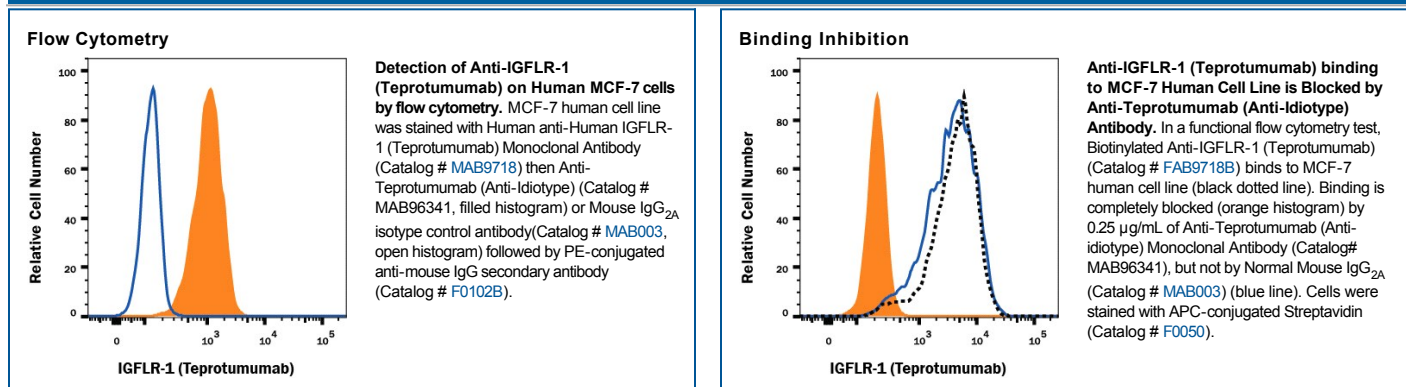
| | |
|---------------------|---------------------------------------------------------------------------------------------------------------------------------------------------------------------------------------------------------------|
| Specificity | Detects Teprotumumab in direct ELISAs. |
| Source | Monoclonal Mouse IgG _{2A} Clone # 975547 |
| Purification | Protein A or G purified from hybridoma culture supernatant |
| Immunogen | Full-length Teprotumumab |
| Formulation | Lyophilized from a 0.2 µm filtered solution in PBS with Trehalose. See Certificate of Analysis for details. *Small pack size (-SP) is supplied either lyophilized or as a 0.2 µm filtered solution in PBS. |

APPLICATIONS

Please Note: Optimal dilutions should be determined by each laboratory for each application. *General Protocols* are available in the *Technical Information* section on our website.

| | Recommended Concentration | Sample |
|---------------------------|----------------------------------|---------------|
| Binding Inhibition | 2.5 µg/mL | See Below |
| Flow Cytometry | 0.25 µg/10 ⁶ cells | See Below |

DATA



PREPARATION AND STORAGE

| | |
|--------------------------------|-----------------------------------------------------------------------------------------------------------------------------------------------------------------------------------------------------------------------------------------------------------------------------------------------------------------------------------------------------------------|
| Reconstitution | Reconstitute at 0.5 mg/mL in sterile PBS. |
| Shipping | The product is shipped at ambient temperature. Upon receipt, store it immediately at the temperature recommended below. *Small pack size (-SP) is shipped with polar packs. Upon receipt, store it immediately at -20 to -70 °C |
| Stability & Storage | <p>Use a manual defrost freezer and avoid repeated freeze-thaw cycles.</p> <ul style="list-style-type: none"> ● 12 months from date of receipt, -20 to -70 °C as supplied. ● 1 month, 2 to 8 °C under sterile conditions after reconstitution. ● 6 months, -20 to -70 °C under sterile conditions after reconstitution. |

BACKGROUND

The anti-Teprotumumab antibody is an anti-Idiotype antibody raised against and selected for the antigenic determinants of the variable region of Teprotumumab. The antibody has been tested against a broad range of other biosimilars to ensure specificity. This highly specialized anti-idiotypic antibody can be used in a variety of pharmacokinetic (PK) assay formats.