

## DESCRIPTION

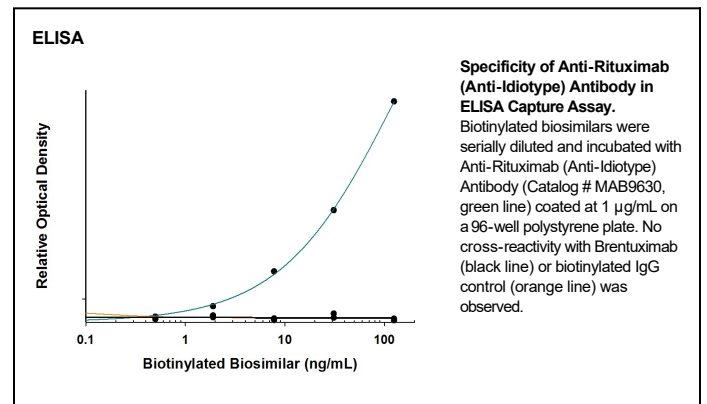
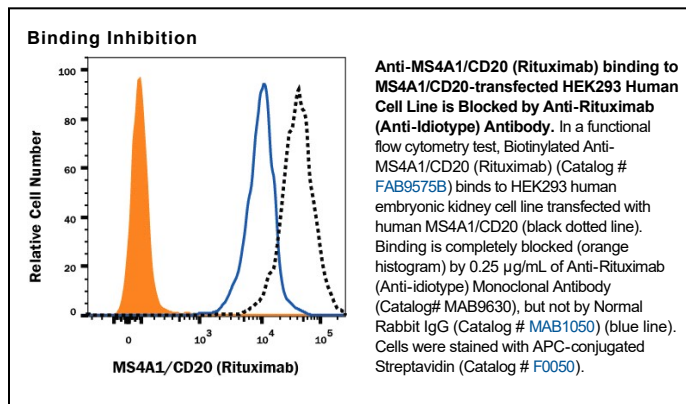
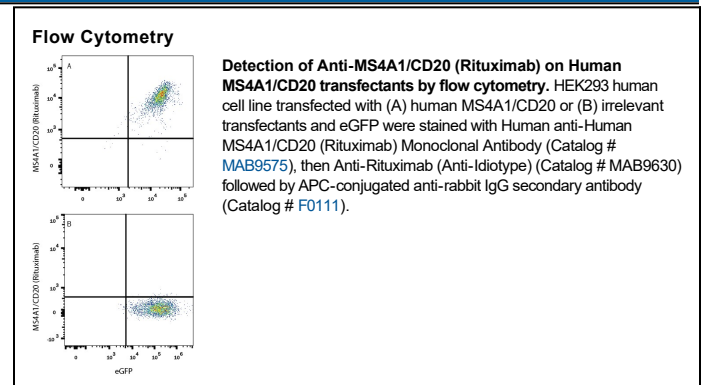
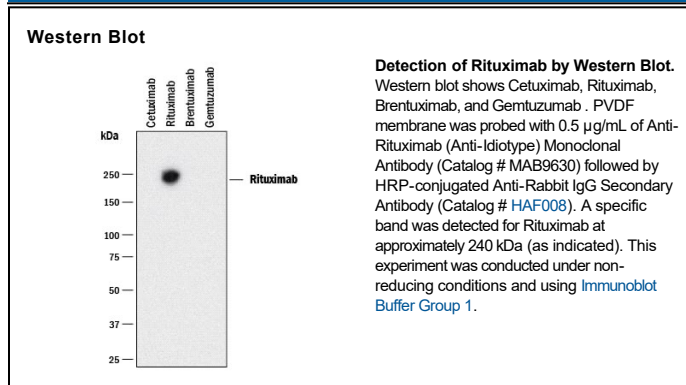
<b>Specificity</b>	Detects Rituximab in Western blots in direct ELISAs. 100% cross-reactivity with Tositumomab and Ibritumomab (95% or higher sequence identity with Rituximab) and no cross-reactivity with Cetuximab, Trastuzumab, Brentuximab, Gemtuzumab, Adalimumab, Solanezumab, Teprotumumab, and Aducanumab is observed.
<b>Source</b>	Recombinant Monoclonal Rabbit IgG Clone # 2260A
<b>Purification</b>	Protein A or G purified from cell culture supernatant
<b>Immunogen</b>	Full-length Rituximab
<b>Formulation</b>	Lyophilized from a 0.2 µm filtered solution in PBS with Trehalose. See Certificate of Analysis for details. *Small pack size (-SP) is supplied either lyophilized or as a 0.2 µm filtered solution in PBS.

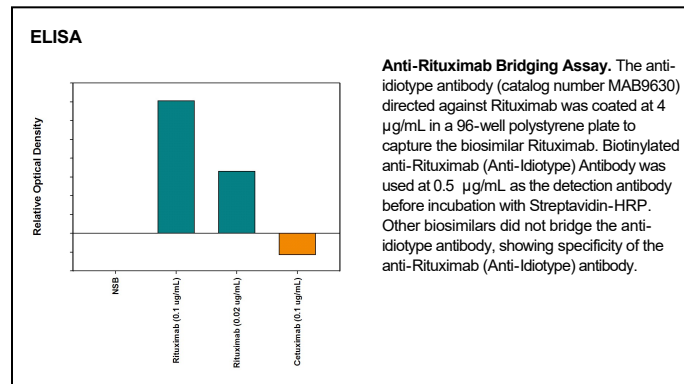
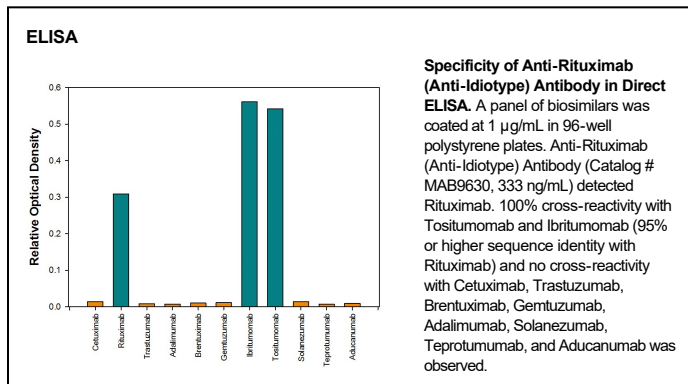
## APPLICATIONS

Please Note: Optimal dilutions should be determined by each laboratory for each application. General Protocols are available in the Technical Information section on our website.

	Recommended Concentration	Sample
<b>Western Blot</b>	0.5 µg/mL	See Below
<b>Binding Inhibition</b>	2.5 µg/mL	See Below
<b>Flow Cytometry</b>	0.25 µg/10 <sup>6</sup> cells	See Below
<b>ELISA</b>	Detects Rituximab, Ibritumomab and Tositumomab in direct ELISA.	

## DATA





## PREPARATION AND STORAGE

**Reconstitution** Reconstitute at 0.5 mg/mL in sterile PBS.

**Shipping** The product is shipped at ambient temperature. Upon receipt, store it immediately at the temperature recommended below.  
\*Small pack size (-SP) is shipped with polar packs. Upon receipt, store it immediately at -20 to -70 °C

**Stability & Storage** Use a manual defrost freezer and avoid repeated freeze-thaw cycles.

- 12 months from date of receipt, -20 to -70 °C as supplied.
- 1 month, 2 to 8 °C under sterile conditions after reconstitution.
- 6 months, -20 to -70 °C under sterile conditions after reconstitution.

## BACKGROUND

The anti-Rituximab antibody is an anti-Idiotypic antibody raised against and selected for the antigenic determinants of the variable region of Rituximab. The antibody has been tested against a broad range of other biosimilars to ensure specificity. This highly specialized anti-idiotypic antibody can be used in a variety of pharmacokinetic (PK) assay formats. In addition to Rituximab, the anti-Idiotypic antibody also detects derivatives of Rituximab (Ibritumomab and Tositumomab).