

DESCRIPTION

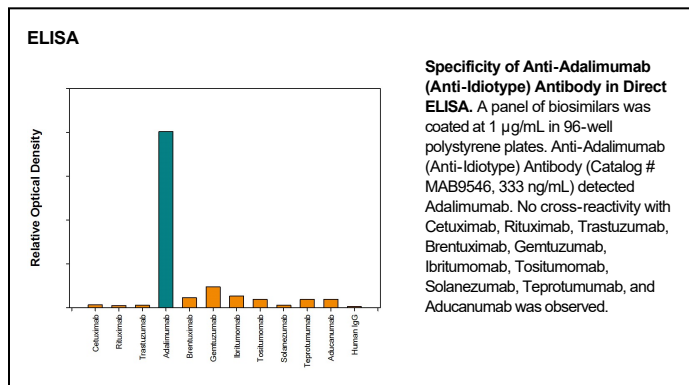
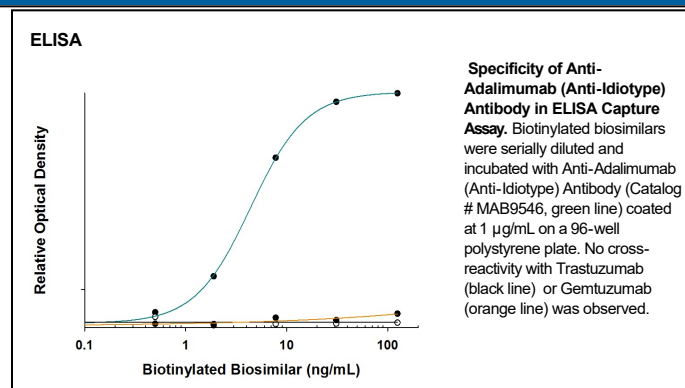
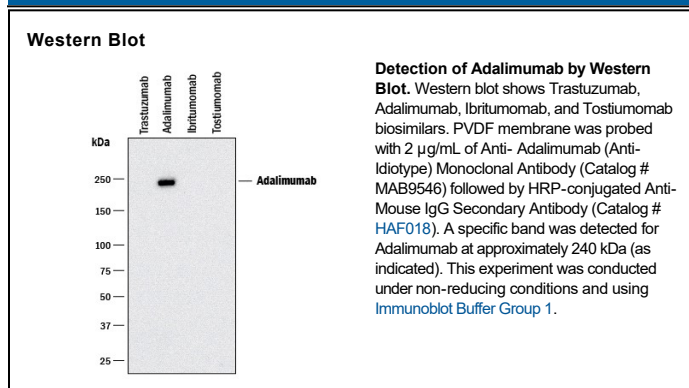
Specificity	Detects Adalimumab in Western blots and direct ELISAs. In direct ELISAs, no cross-reactivity with Cetuximab, Ibritumomab, Rituximab, Trastuzumab, Tositumomab, Brentuximab, Gemtuzumab, Solanezumab, Teprotumumab, and Aducanumab is observed.
Source	Monoclonal Mouse IgG _{2B} Clone # 972557
Purification	Protein A or G purified from hybridoma culture supernatant
Immunogen	Full length Adalimumab
Formulation	Lyophilized from a 0.2 µm filtered solution in PBS with Trehalose. See Certificate of Analysis for details. *Small pack size (-SP) is supplied either lyophilized or as a 0.2 µm filtered solution in PBS.

APPLICATIONS

Please Note: Optimal dilutions should be determined by each laboratory for each application. *General Protocols* are available in the *Technical Information* section on our website.

	Recommended Concentration	Sample
Western Blot	2 µg/mL	See Below
ELISA	Detects Adalimumab in direct ELISAs.	

DATA



PREPARATION AND STORAGE

Reconstitution	Reconstitute at 0.5 mg/mL in sterile PBS.
Shipping	The product is shipped at ambient temperature. Upon receipt, store it immediately at the temperature recommended below. *Small pack size (-SP) is shipped with polar packs. Upon receipt, store it immediately at -20 to -70 °C
Stability & Storage	Use a manual defrost freezer and avoid repeated freeze-thaw cycles. <ul style="list-style-type: none"> ● 12 months from date of receipt, -20 to -70 °C as supplied. ● 1 month, 2 to 8 °C under sterile conditions after reconstitution. ● 6 months, -20 to -70 °C under sterile conditions after reconstitution.

BACKGROUND

The anti-Adalimumab antibody is an anti-Idiotypic antibody raised against and selected for the antigenic determinants of the variable region of Adalimumab. The antibody has been tested against a broad range of other biosimilars to ensure specificity. This highly specialized anti-idiotypic antibody can be used in a variety of pharmacokinetic (PK) assay formats.