

**DESCRIPTION**

|                           |   |
|---------------------------|---|
| <b>Species Reactivity</b> | Human   |
| <b>Specificity</b>        | Detects human ATAD2 in direct ELISAs.   |
| <b>Source</b>             | Monoclonal Mouse IgG <sub>2B</sub> Clone # 952947   |
| <b>Purification</b>       | Protein A or G purified from hybridoma culture supernatant  |
| <b>Immunogen</b>          | Human ATAD2 synthetic peptide<br>Accession # Q6PL18   |
| <b>Formulation</b>        | Lyophilized from a 0.2 µm filtered solution in PBS with Trehalose. See Certificate of Analysis for details.<br>*Small pack size (-SP) is supplied either lyophilized or as a 0.2 µm filtered solution in PBS. |

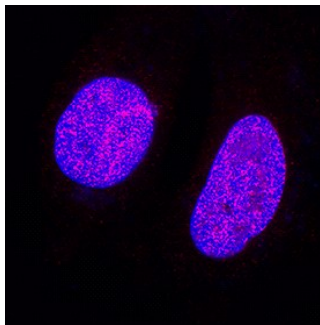
**APPLICATIONS**

**Please Note:** Optimal dilutions should be determined by each laboratory for each application. *General Protocols* are available in the *Technical Information* section on our website.

|                            | <b>Recommended Concentration</b> | <b>Sample</b> |
|----------------------------|----------------------------------|---------------|
| <b>Immunocytochemistry</b> | 8-25 µg/mL                       | See Below     |

**DATA**

**Immunocytochemistry**



**ATAD2 in MCF-7 Human Cell Line.**  
ATAD2 was detected in immersion fixed MCF-7 human breast cancer cell line using Mouse Anti-Human ATAD2 Monoclonal Antibody (Catalog # MAB9169) at 8 µg/mL for 3 hours at room temperature. Cells were stained using the NorthernLights™ 557-conjugated Anti-Mouse IgG Secondary Antibody (red; Catalog # NL007) and counterstained with DAPI (blue). Specific staining was localized to nuclei. View our protocol for [Fluorescent ICC Staining of Cells on Coverslips](#).

**PREPARATION AND STORAGE**

|                                |  |
|--------------------------------|--|
| <b>Reconstitution</b>          | Reconstitute at 0.5 mg/mL in sterile PBS.  |
| <b>Shipping</b>                | The product is shipped at ambient temperature. Upon receipt, store it immediately at the temperature recommended below.<br>*Small pack size (-SP) is shipped with polar packs. Upon receipt, store it immediately at -20 to -70 °C   |
| <b>Stability &amp; Storage</b> | <b>Use a manual defrost freezer and avoid repeated freeze-thaw cycles.</b> <ul style="list-style-type: none"> <li>● 12 months from date of receipt, -20 to -70 °C as supplied.</li> <li>● 1 month, 2 to 8 °C under sterile conditions after reconstitution.</li> <li>● 6 months, -20 to -70 °C under sterile conditions after reconstitution.</li> </ul> |

**BACKGROUND**

ATAD2/ANCCA/PRO2000 is an AAA (ATPases Associated with diverse cellular Activities) protein with two AAA domains and a bromodomain. ATAD2 is a coactivator in the regulatory process of ER alpha induction of target genes in breast cancer. Upon activation by estrogen, ATAD2 associates with ER alpha and ACTR and subsequently promotes expression of ER alpha target genes cyclin D1, c-myc and E2F1 in breast cancer cells. ATAD2 also binds and hydrolyzes ATP, mediating hypermethylation of protein complexes. ATAD2 is reported to be a prognostic biomarker in endometrial, lung, ovarian and gastric cancers. The function of ATAD2 has also been reported in other carcinomas, including cervical, hepatocellular, colorectal and lung cancers.