

DESCRIPTION

Species Reactivity	Mouse
Specificity	Detects mouse CD24a in direct ELISAs.
Source	Monoclonal Rat IgG _{2A} Clone # 910019
Purification	Protein A or G purified from hybridoma culture supernatant
Immunogen	Peptide sequence spanning a portion of the extracellular region Accession # P24807
Formulation	Lyophilized from a 0.2 µm filtered solution in PBS with Trehalose. See Certificate of Analysis for details. *Small pack size (-SP) is supplied as a 0.2 µm filtered solution in PBS.

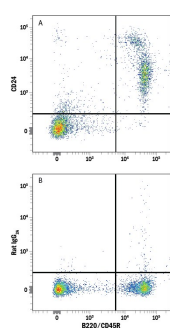
APPLICATIONS

Please Note: Optimal dilutions should be determined by each laboratory for each application. *General Protocols* are available in the *Technical Information* section on our website.

	Recommended Concentration	Sample
Flow Cytometry	0.25 µg/10 ⁶ cells	See Below
Immunohistochemistry	8-25 µg/mL	See Below

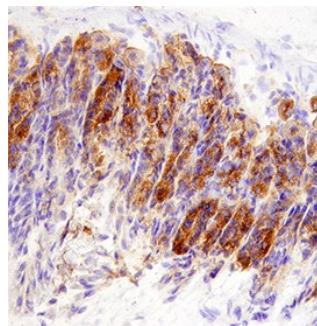
DATA

Flow Cytometry



Detection of CD24 in Mouse Splenocytes by Flow Cytometry. Mouse splenocytes were stained with Rat Anti-Mouse B220/CD45R PE-conjugated Monoclonal Antibody (Catalog # [FAB1217P](#)) and either (A) Rat Anti-Mouse CD24 Monoclonal Antibody (Catalog # [MAB8547](#)) or (B) Rat IgG_{2A} Isotype Control (Catalog # [MAB006](#)) followed by Allophycocyanin-conjugated Anti-Rat IgG Secondary Antibody (Catalog # [F0113](#)).

Immunohistochemistry



CD24 in Mouse Stomach. CD24 was detected in immersion fixed paraffin-embedded sections of mouse stomach using Rat Anti-Mouse CD24 Monoclonal Antibody (Catalog # [MAB8547](#)) at 25 µg/mL overnight at 4 °C. Tissue was stained using the Anti-Rat HRP-DAB Cell & Tissue Staining Kit (brown; Catalog # [CTS017](#)) and counterstained with hematoxylin (blue). Specific staining was localized to parietal cells in gastric glands. View our protocol for [Chromogenic IHC Staining of Paraffin-embedded Tissue Sections](#).

PREPARATION AND STORAGE

Reconstitution	Reconstitute at 0.5 mg/mL in sterile PBS.
Shipping	The product is shipped at ambient temperature. Upon receipt, store it immediately at the temperature recommended below. *Small pack size (-SP) is shipped with polar packs. Upon receipt, store it immediately at -20 to -70 °C
Stability & Storage	Use a manual defrost freezer and avoid repeated freeze-thaw cycles. <ul style="list-style-type: none"> ● 12 months from date of receipt, -20 to -70 °C as supplied. ● 1 month, 2 to 8 °C under sterile conditions after reconstitution. ● 6 months, -20 to -70 °C under sterile conditions after reconstitution.

BACKGROUND

CD24, also known as Heat Stable Antigen (HSA), is a heavily and variably glycosylated 35-60 kDa GPI-linked sialoprotein. CD24 is expressed on B cells, T cells, keratinocytes, and myofiber synaptic nuclei and is upregulated in a wide variety of cancers. It is also a marker for exosomes released into the urine and amniotic fluid. CD24 binds to P-Selectin on activated platelets and vascular endothelial cells. CD24 ligation induces tumor cell apoptosis and is important for the deletion of autoreactive T cells. Mature mouse CD24 shares 30% aa sequence identity with human CD24.