

DESCRIPTION

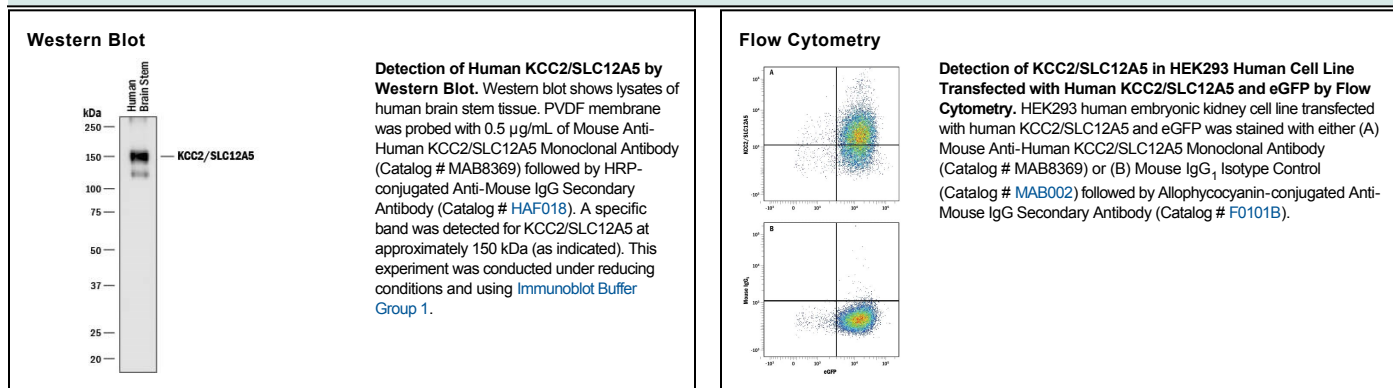
Species Reactivity	Human
Specificity	Detects human SLC12A5 in ELISAs and Western blots.
Source	Monoclonal Mouse IgG ₁ Clone # 905705
Purification	Protein A or G purified from hybridoma culture supernatant
Immunogen	NS0 mouse myeloma cell line transfected with human SLC12A5 Accession # Q9H2X9
Formulation	Lyophilized from a 0.2 µm filtered solution in PBS with Trehalose. See Certificate of Analysis for details. *Small pack size (-SP) is supplied as a 0.2 µm filtered solution in PBS.

APPLICATIONS

Please Note: Optimal dilutions should be determined by each laboratory for each application. *General Protocols* are available in the *Technical Information* section on our website.

	Recommended Concentration	Sample
Western Blot	0.5 µg/mL	See Below
Flow Cytometry	2.5 µg/10 ⁶ cells	See Below

DATA



PREPARATION AND STORAGE

Reconstitution	Reconstitute at 0.5 mg/mL in sterile PBS.
Shipping	The product is shipped at ambient temperature. Upon receipt, store it immediately at the temperature recommended below. *Small pack size (-SP) is shipped with polar packs. Upon receipt, store it immediately at -20 to -70 °C
Stability & Storage	Use a manual defrost freezer and avoid repeated freeze-thaw cycles. <ul style="list-style-type: none"> ● 12 months from date of receipt, -20 to -70 °C as supplied. ● 1 month, 2 to 8 °C under sterile conditions after reconstitution. ● 6 months, -20 to -70 °C under sterile conditions after reconstitution.

BACKGROUND

Solute Carrier, family 12 (potassium/chloride transporter), member 5 (SLC12A5) encodes KCC2, a multi-pass co-transporter for K⁺ and Cl⁻. KCC2/SLC12A5 is expressed on neurons, and is dysregulated in schizophrenia, spasticity, and affective disorders.