

## DESCRIPTION

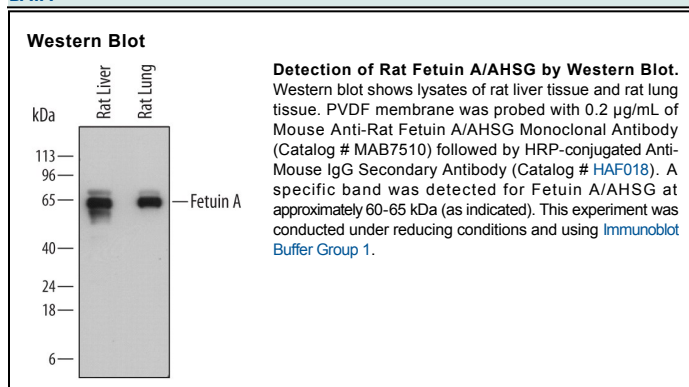
<b>Species Reactivity</b>	Rat
<b>Specificity</b>	Detects rat Fetuin A/AHSG in direct ELISAs. In direct ELISAs and Western blots, no cross-reactivity with recombinant human Fetuin A or recombinant mouse Fetuin A is observed.
<b>Source</b>	Monoclonal Mouse IgG <sub>1</sub> Clone # 774761
<b>Purification</b>	Protein A or G purified from hybridoma culture supernatant
<b>Immunogen</b>	Mouse myeloma cell line NS0-derived recombinant rat Fetuin A/AHSG Ala19-I352 Accession # P24090
<b>Formulation</b>	Lyophilized from a 0.2 µm filtered solution in PBS with Trehalose. See Certificate of Analysis for details. *Small pack size (-SP) is supplied as a 0.2 µm filtered solution in PBS.

## APPLICATIONS

**Please Note:** Optimal dilutions should be determined by each laboratory for each application. *General Protocols* are available in the *Technical Information* section on our website.

	Recommended Concentration	Sample
<b>Western Blot</b>	0.2 µg/mL	See Below

## DATA



## PREPARATION AND STORAGE

<b>Reconstitution</b>	Sterile PBS to a final concentration of 0.5 mg/mL.
<b>Shipping</b>	The product is shipped at ambient temperature. Upon receipt, store it immediately at the temperature recommended below. *Small pack size (-SP) is shipped with polar packs. Upon receipt, store it immediately at -20 to -70 °C
<b>Stability &amp; Storage</b>	<b>Use a manual defrost freezer and avoid repeated freeze-thaw cycles.</b> <ul style="list-style-type: none"> <li>● 12 months from date of receipt, -20 to -70 °C as supplied.</li> <li>● 1 month, 2 to 8 °C under sterile conditions after reconstitution.</li> <li>● 6 months, -20 to -70 °C under sterile conditions after reconstitution.</li> </ul>

## BACKGROUND

Fetuin A, also known as α2-Heremans-Schmid glycoprotein, is encoded by the AHSG gene. It has been also called "countertrypsin" because of its ability to inhibit trypsin (1). Fetuin A is a major plasma protein and a member of the cystatin superfamily of protease inhibitors (2, 3). It is expressed by hepatocytes, the principal cell source, and by monocyte/macrophages (4). The major form of plasma Fetuin A corresponds to two disulfide bond-linked chains derived from the single chain (5). Fetuin A has a number of functions. It is a negative acute-phase protein with normal circulating levels in adults (300-600 µg/mL) which fall significantly (30-50%) during injury and infection (5). It enhances entry of cationic inhibitors into macrophages (6). It inhibits both insulin receptor autophosphorylation and undesirable calcification (7, 8). Mature rat Fetuin A shares 60% and 85% aa sequence identity with human and mouse Fetuin A, respectively.