

DESCRIPTION

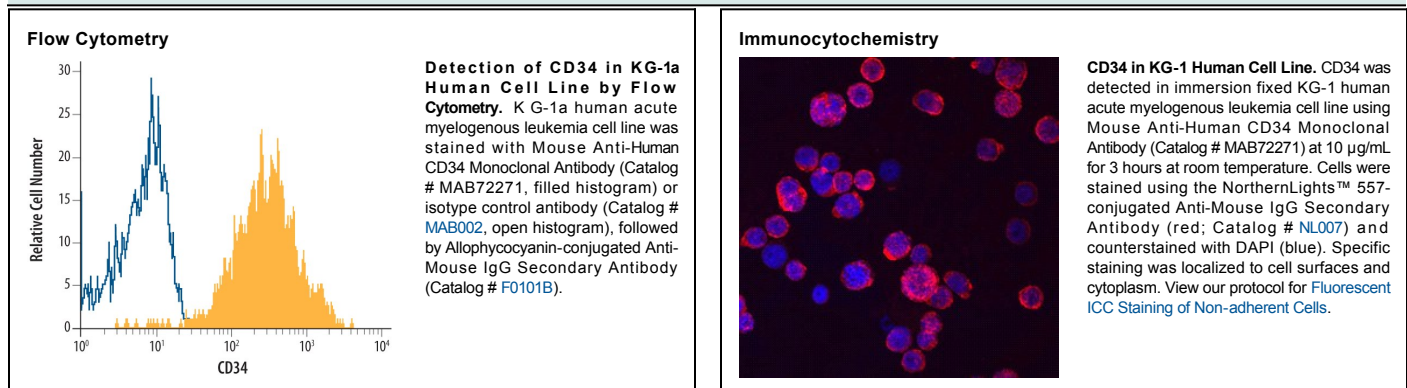
Species Reactivity	Human
Specificity	Detects human CD34 in direct ELISAs. In direct ELISAs, no cross-reactivity with recombinant mouse, rat, or porcine CD34 is observed.
Source	Monoclonal Mouse IgG ₁ Clone # 756510
Purification	Protein A or G purified from hybridoma culture supernatant
Immunogen	Chinese hamster ovary cell line CHO-derived recombinant human CD34 Ser32-Thr290 Accession # P28906
Formulation	Lyophilized from a 0.2 µm filtered solution in PBS with Trehalose. See Certificate of Analysis for details. *Small pack size (-SP) is supplied as a 0.2 µm filtered solution in PBS.

APPLICATIONS

Please Note: Optimal dilutions should be determined by each laboratory for each application. *General Protocols* are available in the *Technical Information* section on our website.

	Recommended Concentration	Sample
Flow Cytometry	2.5 µg/10 ⁶ cells	See Below
Immunocytochemistry	8-25 µg/mL	See Below

DATA



PREPARATION AND STORAGE

Reconstitution	Sterile PBS to a final concentration of 0.5 mg/mL.
Shipping	The product is shipped at ambient temperature. Upon receipt, store it immediately at the temperature recommended below. *Small pack size (-SP) is shipped with polar packs. Upon receipt, store it immediately at -20 to -70 °C
Stability & Storage	Use a manual defrost freezer and avoid repeated freeze-thaw cycles. <ul style="list-style-type: none"> • 12 months from date of receipt, -20 to -70 °C as supplied. • 1 month, 2 to 8 °C under sterile conditions after reconstitution. • 6 months, -20 to -70 °C under sterile conditions after reconstitution.

BACKGROUND

The CD34 family of cell surface transmembrane proteins includes the hematopoietic progenitor cell antigen CD34, Podocalyxin, and Endoglycan. This single-pass sialomucin-like transmembrane protein is heavily glycosylated and phosphorylated by Protein kinase C (PKC). CD34 is a 115 kDa glycoprotein found on multipotent precursors, bone marrow stromal cells, embryonic fibroblasts, vascular endothelia, as well as some populations of mesenchymal stem cells, and tumor cell lines. CD34 is involved in the adhesion of stem cells to the bone marrow extracellular matrix or to stromal cells.