

## DESCRIPTION

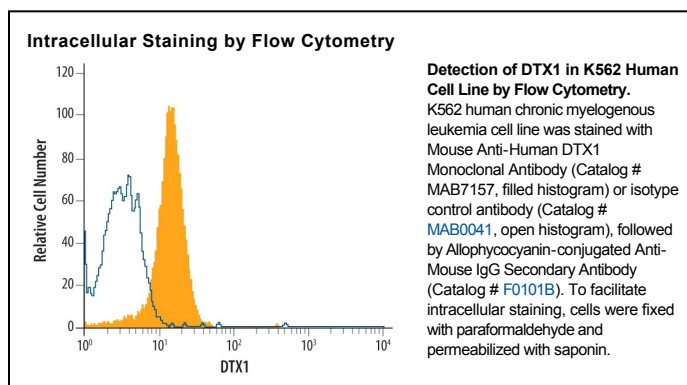
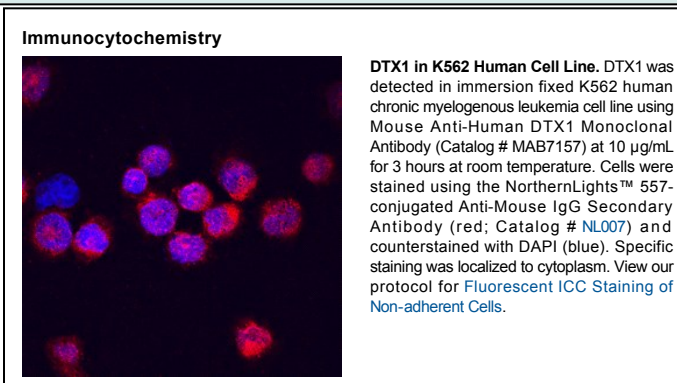
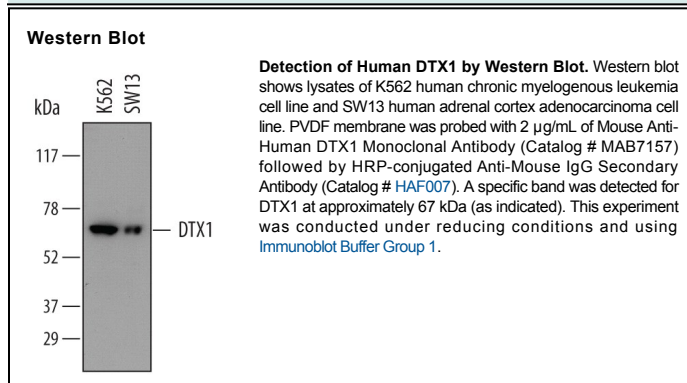
<b>Species Reactivity</b>	Human
<b>Specificity</b>	Detects human DTX1 in direct ELISAs and Western blots. In direct ELISAs and Western blots, 100% cross-reactivity with recombinant human Deltex-4 is observed.
<b>Source</b>	Monoclonal Mouse IgG <sub>2B</sub> Clone # 730612
<b>Purification</b>	Protein A or G purified from hybridoma culture supernatant
<b>Immunogen</b>	<i>E. coli</i> -derived recombinant human DTX1 Met1-Phe147 Accession # Q86Y01
<b>Formulation</b>	Lyophilized from a 0.2 µm filtered solution in PBS with Trehalose. See Certificate of Analysis for details. *Small pack size (-SP) is supplied as a 0.2 µm filtered solution in PBS.

## APPLICATIONS

**Please Note:** Optimal dilutions should be determined by each laboratory for each application. *General Protocols* are available in the *Technical Information* section on our website.

	Recommended Concentration	Sample
<b>Western Blot</b>	2 µg/mL	See Below
<b>Immunocytochemistry</b>	8-25 µg/mL	See Below
<b>Intracellular Staining by Flow Cytometry</b>	2.5 µg/10 <sup>6</sup> cells	See Below

## DATA



## PREPARATION AND STORAGE

<b>Reconstitution</b>	Sterile PBS to a final concentration of 0.5 mg/mL.
<b>Shipping</b>	The product is shipped at ambient temperature. Upon receipt, store it immediately at the temperature recommended below. *Small pack size (-SP) is shipped with polar packs. Upon receipt, store it immediately at -20 to -70 °C
<b>Stability &amp; Storage</b>	<b>Use a manual defrost freezer and avoid repeated freeze-thaw cycles.</b> <ul style="list-style-type: none"> <li>● 12 months from date of receipt, -20 to -70 °C as supplied.</li> <li>● 1 month, 2 to 8 °C under sterile conditions after reconstitution.</li> <li>● 6 months, -20 to -70 °C under sterile conditions after reconstitution.</li> </ul>

## BACKGROUND

Deltex-1 (DTX1) is an approximately 75 kDa cytoplasmic and nuclear ubiquitin ligase that interacts with the Notch-1 intracellular domain and regulates Notch-induced gene transcription. It contains two WWE domains (aa 14-94 and aa 95-171) and one RING-type zinc finger (aa 411-472). Within aa 1-147, human Deltex-1 shares 97% aa sequence identity with mouse and rat Deltex-1.