

## DESCRIPTION

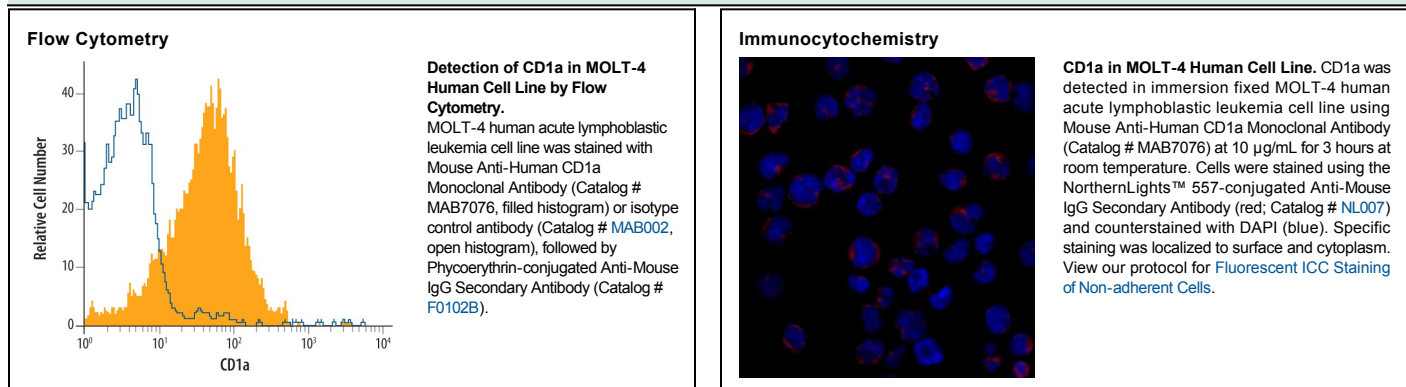
<b>Species Reactivity</b>	Human
<b>Specificity</b>	Detects human CD1a in direct ELISAs. In direct ELISAs, less than 5% cross-reactivity with recombinant human (rh) CD1d is observed and no cross-reactivity with rhCD1b or rhCD1e is observed.
<b>Source</b>	Monoclonal Mouse IgG <sub>1</sub> Clone # 703217
<b>Purification</b>	Protein A or G purified from hybridoma culture supernatant
<b>Immunogen</b>	Mouse myeloma cell line NS0-derived recombinant human CD1a Asp19-Val300 (predicted) Accession # P06126
<b>Formulation</b>	Lyophilized from a 0.2 µm filtered solution in PBS with Trehalose. See Certificate of Analysis for details. *Small pack size (-SP) is supplied as a 0.2 µm filtered solution in PBS.

## APPLICATIONS

**Please Note:** Optimal dilutions should be determined by each laboratory for each application. *General Protocols* are available in the *Technical Information* section on our website.

	<b>Recommended Concentration</b>	<b>Sample</b>
<b>Flow Cytometry</b>	2.5 µg/10 <sup>6</sup> cells	See Below
<b>Immunocytochemistry</b>	8-25 µg/mL	See Below

## DATA



## PREPARATION AND STORAGE

<b>Reconstitution</b>	Sterile PBS to a final concentration of 0.5 mg/mL.
<b>Shipping</b>	The product is shipped at ambient temperature. Upon receipt, store it immediately at the temperature recommended below. *Small pack size (-SP) is shipped with polar packs. Upon receipt, store it immediately at -20 to -70 °C
<b>Stability &amp; Storage</b>	<b>Use a manual defrost freezer and avoid repeated freeze-thaw cycles.</b> <ul style="list-style-type: none"> <li>● 12 months from date of receipt, -20 to -70 °C as supplied.</li> <li>● 1 month, 2 to 8 °C under sterile conditions after reconstitution.</li> <li>● 6 months, -20 to -70 °C under sterile conditions after reconstitution.</li> </ul>

## BACKGROUND

CD1a is a 49 kDa transmembrane glycoprotein in the CD1 family of glycolipid antigen-presenting MHC-like molecules. CD1a contains one Ig-like domain in its extracellular region. It is expressed by most nonhuman mammals but not by mice or rats. Complexes of CD1a with β<sub>2</sub>-microglobulin and endogenous glycolipids are constitutively expressed on antigen presenting cells, cortical thymocytes, and Langerhans cells. CD1a is a target of autoreactive Th22 helper T cells in the skin.