

DESCRIPTION

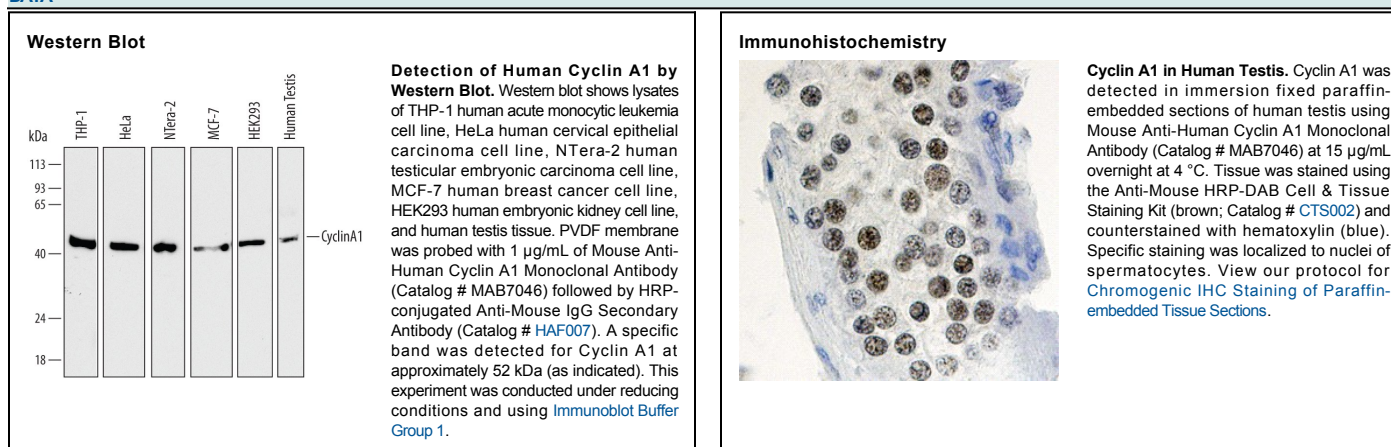
Species Reactivity	Human
Specificity	Detects human Cyclin A1 in direct ELISAs and Western blots. In direct ELISAs and Western blots, no cross-reactivity with recombinant human Cyclin A2, B1, B2, C, D1, D2, D3, E1, E2, or recombinant mouse Cyclin A1 is observed.
Source	Monoclonal Mouse IgG ₁ Clone # 722407
Purification	Protein A or G purified from hybridoma culture supernatant
Immunogen	<i>E. coli</i> -derived recombinant human Cyclin A1 Lys51-Arg220 Accession # P78396
Formulation	Lyophilized from a 0.2 µm filtered solution in PBS with Trehalose. See Certificate of Analysis for details. *Small pack size (-SP) is supplied as a 0.2 µm filtered solution in PBS.

APPLICATIONS

Please Note: Optimal dilutions should be determined by each laboratory for each application. *General Protocols* are available in the *Technical Information* section on our website.

	Recommended Concentration	Sample
Western Blot	1 µg/mL	See Below
Immunohistochemistry	8-25 µg/mL	See Below

DATA



PREPARATION AND STORAGE

Reconstitution	Sterile PBS to a final concentration of 0.5 mg/mL.
Shipping	The product is shipped at ambient temperature. Upon receipt, store it immediately at the temperature recommended below. *Small pack size (-SP) is shipped with polar packs. Upon receipt, store it immediately at -20 to -70 °C
Stability & Storage	<p>Use a manual defrost freezer and avoid repeated freeze-thaw cycles.</p> <ul style="list-style-type: none"> ● 12 months from date of receipt, -20 to -70 °C as supplied. ● 1 month, 2 to 8 °C under sterile conditions after reconstitution. ● 6 months, -20 to -70 °C under sterile conditions after reconstitution.

BACKGROUND

Cyclin A1, also known as CCNA1, is a 64 kDa protein that associates with the kinase Cdk2. This complex phosphorylates multiple substrates involved in regulation of cell cycle progression, apoptosis, double strand DNA break repair, and mRNA splicing. Cyclin A1 activity promotes G2/M phase transition in spermatocyte meiosis and G1/S transition in somatic cells. Cyclin A1 is upregulated in myeloid leukemia, testicular germ cell tumors, and several carcinomas. It contains two cyclin box folds (aa 243-318 and 340-427). Over aa 51-220, human Cyclin A1 shares approximately 75% aa identity with mouse and rat Cyclin A1.