

DESCRIPTION

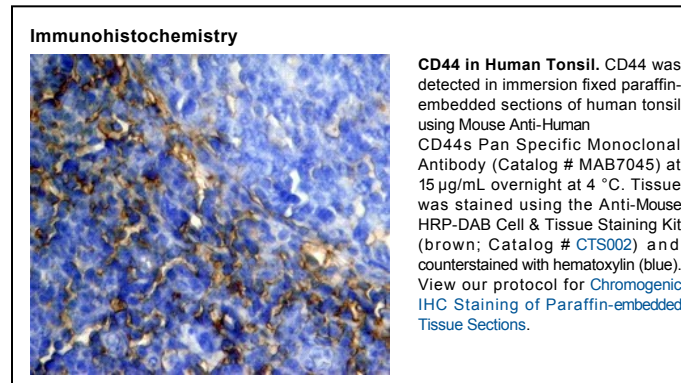
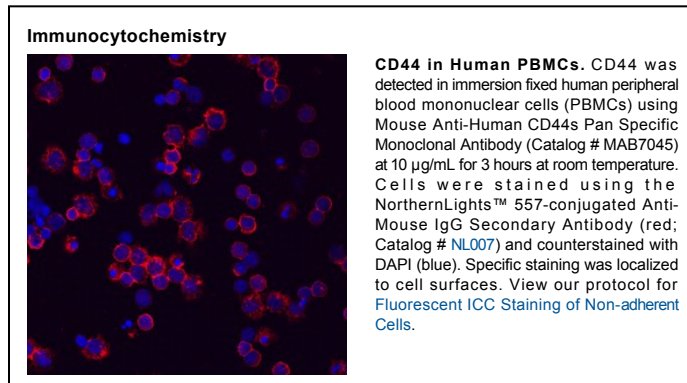
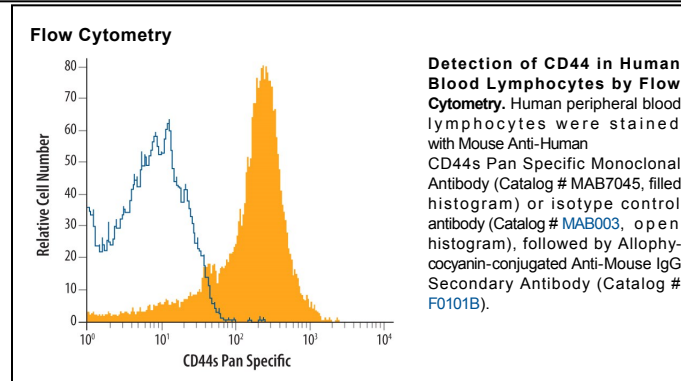
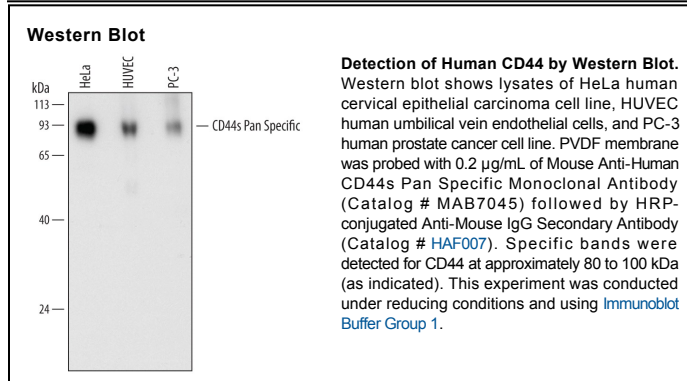
| | |
|---------------------------|---|
| Species Reactivity | Human |
| Specificity | Detects human CD44 in direct ELISAs and Western blots. In direct ELISAs, no cross-reactivity with recombinant CD44 from mouse, rat, or pig is observed. |
| Source | Monoclonal Mouse IgG _{2A} Clone # 691534 |
| Purification | Protein A or G purified from hybridoma culture supernatant |
| Immunogen | Mouse myeloma cell line NS0-derived recombinant human CD44s Gln21-Pro220 Accession # P16070 |
| Formulation | Lyophilized from a 0.2 µm filtered solution in PBS with Trehalose. See Certificate of Analysis for details. *Small pack size (-SP) is supplied as a 0.2 µm filtered solution in PBS. |

APPLICATIONS

Please Note: Optimal dilutions should be determined by each laboratory for each application. [General Protocols](#) are available in the [Technical Information](#) section on our website.

| | Recommended Concentration | Sample |
|-----------------------------|------------------------------|-----------|
| Western Blot | 0.2 µg/mL | See Below |
| Flow Cytometry | 2.5 µg/10 ⁶ cells | See Below |
| Immunocytochemistry | 8-25 µg/mL | See Below |
| Immunohistochemistry | 8-25 µg/mL | See Below |

DATA



PREPARATION AND STORAGE

| | |
|--------------------------------|--|
| Reconstitution | Sterile PBS to a final concentration of 0.5 mg/mL. |
| Shipping | The product is shipped at ambient temperature. Upon receipt, store it immediately at the temperature recommended below. *Small pack size (-SP) is shipped with polar packs. Upon receipt, store it immediately at -20 to -70 °C |
| Stability & Storage | Use a manual defrost freezer and avoid repeated freeze-thaw cycles. <ul style="list-style-type: none"> ● 12 months from date of receipt, -20 to -70 °C as supplied. ● 1 month, 2 to 8 °C under sterile conditions after reconstitution. ● 6 months, -20 to -70 °C under sterile conditions after reconstitution. |

BACKGROUND

CD44 is a ubiquitously expressed protein that is the major receptor for hyaluronan and exerts control over cell growth and migration (1-3). Human CD44 has a 20 amino acid (aa) signal sequence, an extracellular domain (ECD) with a 100 aa hyaluronan-binding disulfide-stabilized link region and a 325-530 aa stem region, a 21 aa transmembrane domain, and a 72 aa cytoplasmic domain. Within the stem, ten variably spliced exons (v1-10, exons 6-15) produce multiple protein isoforms (1-3). The standard or hematopoietic form, CD44s or CD44H, does not include the variable segments (1-3). Cancer aggressiveness and T cell activation have been correlated with expression of specific isoforms (1, 3). With variable N- and O-glycosylation and splicing within the stalk, CD44 can range from 80 to 200 kDa (1). Within the N-terminal invariant portion of the ECD (aa 21-220), human CD44 shares 76%, 76%, 86%, 83% and 79% identity with corresponding mouse, rat, equine, canine and bovine CD44, respectively. The many reported functions of CD44 fall within three categories (1). First, CD44 binds hyaluronan and other ligands within the extracellular matrix and can function as a "platform" for growth factors and metalloproteinases. Second, CD44 can function as a co-receptor that modifies activity of receptors including MET and the ERBB family of tyrosine kinases. Third, the CD44 intracellular domain links the plasma membrane to the actin cytoskeleton via the ERM proteins, ezrin, radixin and moesin. CD44 can be synthesized in a soluble form (4) or may be cleaved at multiple sites by either membrane-type matrix metalloproteinases, or ADAM proteases to produce soluble ectodomains (5, 6). The cellular portion may then undergo gamma secretase-dependent intramembrane cleavage to form an A β -like transmembrane portion and a cytoplasmic signaling portion that affects gene expression (7, 8). These cleavage events are thought to promote metastasis by enhancing tumor cell motility and growth (1, 5).

References:

1. Ponta, H. *et al.* (2003) *Nat. Rev. Mol. Cell Biol.* **4**:33.
2. Sreaton, G.R. *et al.* (1992) *Proc. Natl. Acad. Sci. USA* **89**:12160.
3. Lynch, K.W. (2004) *Nat. Rev. Immunol.* **4**:931.
4. Yu, Q. and B.P. Toole (1996) *J. Biol. Chem.* **271**:20603.
5. Nagano, O. and H. Saya (2004) *Cancer Sci.* **95**:930.
6. Nakamura, H. *et al.* (2004) *Cancer Res.* **64**:876.
7. Murakami, D. *et al.* (2003) *Oncogene* **22**:1511.
8. Lammich, S. *et al.* (2002) *J. Biol. Chem.* **277**:44754.