

DESCRIPTION

Species Reactivity	Human
Specificity	Detects human CD25/IL-2 Rα in ELISAs and Western blots. In sandwich immunoassays, this antibody does not cross-react or interfere with recombinant human (rh) IL-1 RI, rhIL-1 RII, rhIL-2 Rβ, rhIL-3 Rα, rhIL-4 R, rhIL-5 Rα, rhIL-5 Rβ, rhIL-6 R, or rhgp130.
Source	Monoclonal Mouse IgG ₁ Clone # 24204
Purification	Protein A or G purified from ascites
Immunogen	<i>S. frugiperda</i> insect ovarian cell line Sf 21-derived recombinant human CD25/IL-2 Rα Glu22-Cys213 Accession # P01589
Formulation	Lyophilized from a 0.2 μm filtered solution in PBS with Trehalose. See Certificate of Analysis for details. *Small pack size (-SP) is supplied as a 0.2 μm filtered solution in PBS.

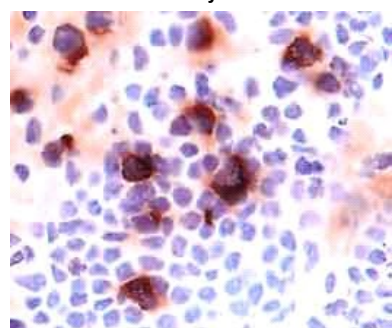
APPLICATIONS

Please Note: Optimal dilutions should be determined by each laboratory for each application. [General Protocols](#) are available in the Technical Information section on our website.

	Recommended Concentration	Sample
Western Blot	1 μg/mL	Recombinant Human CD25/IL-2 Rα (Catalog # 223-2A) under non-reducing conditions only
Immunocytochemistry	8-25 μg/mL	See Below
Immunohistochemistry	8-25 μg/mL	See Below
Human CD25/IL-2 Rα Sandwich Immunoassay		Reagent
ELISA Capture	2-8 μg/mL	Human CD25/IL-2 R alpha Antibody (Catalog # MAB623)
ELISA Detection	0.1-0.4 μg/mL	Human CD25/IL-2 R alpha Biotinylated Antibody (Catalog # BAF223)
Standard		Recombinant Human CD25/IL-2 R alpha (Catalog # 223-2A)

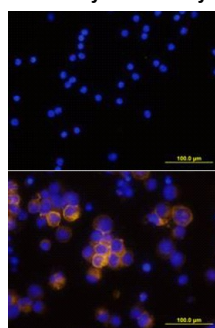
DATA

Immunohistochemistry



CD25/IL-2 Rα in Human Lymph Node. CD25/IL-2 Rα was detected in immersion fixed frozen sections of human lymph node using 15 μg/mL Mouse Anti-Human CD25/IL-2 Rα Monoclonal Antibody (Catalog # MAB623) overnight at 4 °C. Tissue was stained (red) and counterstained with hematoxylin (blue). View our protocol for [Chromogenic IHC Staining of Frozen Tissue Sections](#).

Immunocytochemistry



CD25/IL-2 Rα in Human PBMCs. CD25/IL-2 Rα was detected in immersion fixed human peripheral blood mononuclear cells (PBMCs) stimulated with PHA using Mouse Anti-Human CD25/IL-2 Rα Monoclonal Antibody (Catalog # MAB623) at 10 μg/mL for 3 hours at room temperature. Cells were stained using the NorthernLights™ 557-conjugated Anti-Mouse IgG Secondary Antibody (yellow; Catalog # [NL007](#)) and counterstained with DAPI (blue). Upper panel shows a lack of labeling if primary antibodies are omitted and tissue is stained only with secondary antibody followed by incubation with detection reagents. View our protocol for [Fluorescent ICC Staining of Non-adherent Cells](#).

PREPARATION AND STORAGE

Reconstitution	Reconstitute at 0.5 mg/mL in sterile PBS.
Shipping	The product is shipped at ambient temperature. Upon receipt, store it immediately at the temperature recommended below. *Small pack size (-SP) is shipped with polar packs. Upon receipt, store it immediately at -20 to -70 °C
Stability & Storage	Use a manual defrost freezer and avoid repeated freeze-thaw cycles. <ul style="list-style-type: none"> 12 months from date of receipt, -20 to -70 °C as supplied. 1 month, 2 to 8 °C under sterile conditions after reconstitution. 6 months, -20 to -70 °C under sterile conditions after reconstitution.

BACKGROUND

IL-2 Rα is a type I transmembrane protein that associates with IL-2 Rβ and the common γ chain to form a high affinity heterotrimeric receptor complex for IL-2. A soluble form of IL-2 Rα has been detected in serum.