

DESCRIPTION

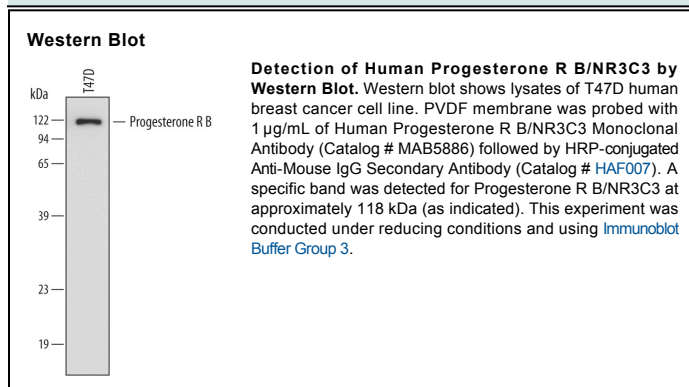
Species Reactivity	Human
Specificity	Detects endogenous human Progesterone R B in Western blots.
Source	Monoclonal Mouse IgG _{2B} Clone # 569012
Purification	Protein A or G purified from hybridoma culture supernatant
Immunogen	<i>E. coli</i> -derived recombinant human Progesterone R B Met1-Leu189 Accession # P06401
Formulation	Lyophilized from a 0.2 µm filtered solution in PBS with Trehalose. See Certificate of Analysis for details. *Small pack size (-SP) is supplied as a 0.2 µm filtered solution in PBS.

APPLICATIONS

Please Note: Optimal dilutions should be determined by each laboratory for each application. *General Protocols* are available in the *Technical Information* section on our website.

	Recommended Concentration	Sample
Western Blot	1 µg/mL	See Below

DATA



PREPARATION AND STORAGE

Reconstitution	Reconstitute at 0.5 mg/mL in sterile PBS.
Shipping	The product is shipped at ambient temperature. Upon receipt, store it immediately at the temperature recommended below. *Small pack size (-SP) is shipped with polar packs. Upon receipt, store it immediately at -20 to -70 °C
Stability & Storage	Use a manual defrost freezer and avoid repeated freeze-thaw cycles. <ul style="list-style-type: none"> ● 12 months from date of receipt, -20 to -70 °C as supplied. ● 1 month, 2 to 8 °C under sterile conditions after reconstitution. ● 6 months, -20 to -70 °C under sterile conditions after reconstitution.

BACKGROUND

Progesterone Receptor B (PR-B) is a 118 kDa member of the NR3 subfamily within the nuclear hormone receptor family of proteins. It is expressed in several tissues, including female reproductive organs as well as neurons throughout the CNS. PR-B is particularly important in the mammary gland where it mediates proliferative responses to progesterone. Human PR-B contains an N-terminal regulatory region (aa1-566), a DNA binding domain (aa 567-639), and a steroid-binding region (aa 681-933). Ligand binding induces a key phosphorylation event at Ser294 by ERK1/2.