

## DESCRIPTION

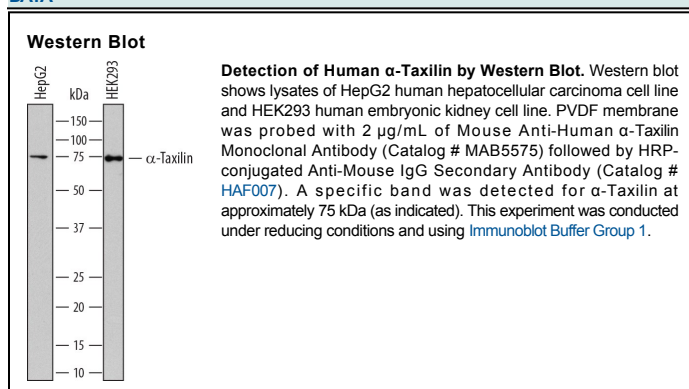
|                           |   |
|---------------------------|---|
| <b>Species Reactivity</b> | Human   |
| <b>Specificity</b>        | Detects human $\alpha$ -Taxilin in direct ELISAs and Western blots.   |
| <b>Source</b>             | Monoclonal Mouse IgG <sub>1</sub> Clone # 812901  |
| <b>Purification</b>       | Protein A or G purified from hybridoma culture supernatant  |
| <b>Immunogen</b>          | <i>E. coli</i> -derived recombinant human $\alpha$ -Taxilin<br>Met1-Lys162<br>Accession # P40222  |
| <b>Formulation</b>        | Lyophilized from a 0.2 $\mu$ m filtered solution in PBS with Trehalose. See Certificate of Analysis for details.<br>*Small pack size (-SP) is supplied as a 0.2 $\mu$ m filtered solution in PBS. |

## APPLICATIONS

**Please Note:** Optimal dilutions should be determined by each laboratory for each application. *General Protocols* are available in the *Technical Information* section on our website.

|                     | Recommended Concentration | Sample    |
|---------------------|---------------------------|-----------|
| <b>Western Blot</b> | 2 $\mu$ g/mL              | See Below |

## DATA



## PREPARATION AND STORAGE

|                                |  |
|--------------------------------|--|
| <b>Reconstitution</b>          | Sterile PBS to a final concentration of 0.5 mg/mL.   |
| <b>Shipping</b>                | The product is shipped at ambient temperature. Upon receipt, store it immediately at the temperature recommended below.<br>*Small pack size (-SP) is shipped with polar packs. Upon receipt, store it immediately at -20 to -70 °C   |
| <b>Stability &amp; Storage</b> | <b>Use a manual defrost freezer and avoid repeated freeze-thaw cycles.</b> <ul style="list-style-type: none"> <li>● 12 months from date of receipt, -20 to -70 °C as supplied.</li> <li>● 1 month, 2 to 8 °C under sterile conditions after reconstitution.</li> <li>● 6 months, -20 to -70 °C under sterile conditions after reconstitution.</li> </ul> |

## BACKGROUND

$\alpha$ -Taxilin (TXLN- $\alpha$ ; also p75 [in rat] and IL-14 $\alpha$ ) is the founding member of the taxilin family of proteins. Although its predicted MW is 62 kDa, it runs anomalously at 74-76 kDa in SDS-PAGE.  $\alpha$ -Taxilin is ubiquitously expressed and participates in intracellular vesicle trafficking. In particular,  $\alpha$ -Taxilin interacts with syntaxin family members that localize to the plasma membrane, providing for SNARE complex formation.  $\alpha$ -Taxilin also regulates the placement of growing protein chains. Human  $\alpha$ -Taxilin is 546 amino acids (aa) in length. Its defining characteristic is a large coiled-coil region between aa 186-491. When an alternate start site at Met176 is used, a secreted cytokine is generated termed IL-14 $\alpha$ . Over aa 1-162, human  $\alpha$ -Taxilin shares 81% aa identity with mouse  $\alpha$ -Taxilin.