

#### DESCRIPTION

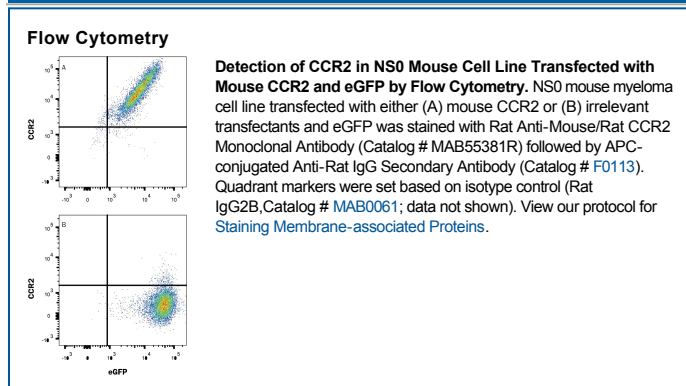
<b>Species Reactivity</b>	Mouse
<b>Specificity</b>	Detects mouse CCR2 transfectants but not the parental cell line in flow cytometry.
<b>Source</b>	Recombinant Monoclonal Rat IgG <sub>2B</sub> Clone # 475301R
<b>Purification</b>	Protein A or G purified from cell culture supernatant
<b>Immunogen</b>	L1.2 mouse pro-B cell line transfected with mouse CCR2
<b>Formulation</b>	Lyophilized from a 0.2 µm filtered solution in PBS with Trehalose. See Certificate of Analysis for details. *Small pack size (-SP) is supplied either lyophilized or as a 0.2 µm filtered solution in PBS.

#### APPLICATIONS

**Please Note:** Optimal dilutions should be determined by each laboratory for each application. General Protocols are available in the Technical Information section on our website.

	<b>Recommended Concentration</b>	<b>Sample</b>
<b>Flow Cytometry</b>	0.25 µg/10 <sup>6</sup> cells	See Below
<b>CyTOF-ready</b>	Ready to be labeled using established conjugation methods. No BSA or other carrier proteins that could interfere with conjugation.	

#### DATA



#### PREPARATION AND STORAGE

<b>Reconstitution</b>	Reconstitute at 0.5 mg/mL in sterile PBS.
<b>Shipping</b>	The product is shipped at ambient temperature. Upon receipt, store it immediately at the temperature recommended below. *Small pack size (-SP) is shipped with polar packs. Upon receipt, store it immediately at -20 to -70 °C
<b>Stability &amp; Storage</b>	<b>Use a manual defrost freezer and avoid repeated freeze-thaw cycles.</b> <ul style="list-style-type: none"> <li>● 12 months from date of receipt, -20 to -70 °C as supplied.</li> <li>● 1 month, 2 to 8 °C under sterile conditions after reconstitution.</li> <li>● 6 months, -20 to -70 °C under sterile conditions after reconstitution.</li> </ul>

#### BACKGROUND

CCR2, also known as CD192, is a 38 kDa 7TM chemokine receptor that binds CCL2, CCL7, CCL8, CCL12 (in mouse only) and CCL13. CCR2 is expressed by multiple hematopoietic cells plus, endothelial cells, fibroblasts, and smooth muscle cells. It functions as an HIV fusion co-factor and facilitates T cell recruitment during inflammation. Mouse CCR2 shares 67% and 95% aa sequence identity with human and rat CCR2, respectively.