

DESCRIPTION

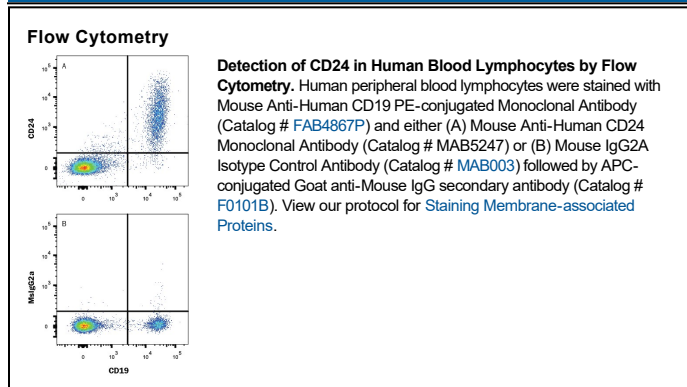
Species Reactivity	Human
Specificity	Detects human CD24
Source	Monoclonal Mouse IgG _{2A} Clone # ML5
Purification	Protein A or G purified from hybridoma culture supernatant
Immunogen	Human CD24
Formulation	Lyophilized from a 0.2 µm filtered solution in PBS with Trehalose. See Certificate of Analysis for details. *Small pack size (-SP) is supplied either lyophilized or as a 0.2 µm filtered solution in PBS.

APPLICATIONS

Please Note: Optimal dilutions should be determined by each laboratory for each application. General Protocols are available in the Technical Information section on our website.

	Recommended Concentration	Sample
Flow Cytometry	0.25 µg/10 ⁶ cells	See Below

DATA



PREPARATION AND STORAGE

Reconstitution	Reconstitute at 0.5 mg/mL in sterile PBS.
Shipping	The product is shipped at ambient temperature. Upon receipt, store it immediately at the temperature recommended below. *Small pack size (-SP) is shipped with polar packs. Upon receipt, store it immediately at -20 to -70 °C
Stability & Storage	Use a manual defrost freezer and avoid repeated freeze-thaw cycles. <ul style="list-style-type: none"> ● 12 months from date of receipt, -20 to -70 °C as supplied. ● 1 month, 2 to 8 °C under sterile conditions after reconstitution. ● 6 months, -20 to -70 °C under sterile conditions after reconstitution.

BACKGROUND

CD24, also known as heat stable antigen (HSA), is a heavily and variably glycosylated 35-60 kDa GPI-linked sialoprotein that is expressed on B cells, T cells, keratinocytes, and myofiber synaptic nuclei and is up-regulated in a wide variety of cancers. It is also a marker for exosomes released into the urine and amniotic fluid. CD24 binds to P-Selectin on activated platelets and vascular endothelial cells. CD24 ligation induces tumor cell apoptosis and is important for the deletion of autoreactive T cells. Mature human CD24 shares 30% and 42% aa sequence identity with mouse and rat CD24, respectively.