

## DESCRIPTION

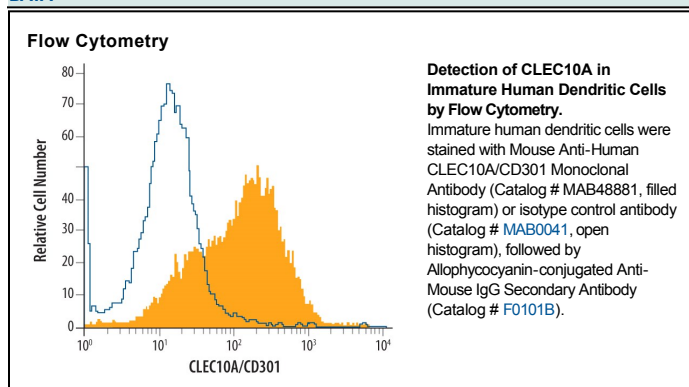
<b>Species Reactivity</b>	Human
<b>Specificity</b>	Detects human CLEC10A/CD301 in direct ELISAs. In direct ELISAs, no cross-reactivity with recombinant human ASGPR1 or recombinant mouse MGL1 is observed.
<b>Source</b>	Monoclonal Mouse IgG <sub>2B</sub> Clone # 744812
<b>Purification</b>	Protein A or G purified from hybridoma culture supernatant
<b>Immunogen</b>	Mouse myeloma cell line NS0-derived recombinant human CLEC10A/CD301 Gln61-His316 Accession # Q8IUN9
<b>Formulation</b>	Lyophilized from a 0.2 µm filtered solution in PBS with Trehalose. See Certificate of Analysis for details. *Small pack size (-SP) is supplied as a 0.2 µm filtered solution in PBS.

## APPLICATIONS

**Please Note:** Optimal dilutions should be determined by each laboratory for each application. *General Protocols* are available in the *Technical Information* section on our website.

	<b>Recommended Concentration</b>	<b>Sample</b>
<b>Flow Cytometry</b>	2.5 µg/10 <sup>6</sup> cells	See Below

## DATA



## PREPARATION AND STORAGE

<b>Reconstitution</b>	Sterile PBS to a final concentration of 0.5 mg/mL.
<b>Shipping</b>	The product is shipped at ambient temperature. Upon receipt, store it immediately at the temperature recommended below. *Small pack size (-SP) is shipped with polar packs. Upon receipt, store it immediately at -20 to -70 °C
<b>Stability &amp; Storage</b>	<b>Use a manual defrost freezer and avoid repeated freeze-thaw cycles.</b> <ul style="list-style-type: none"> <li>● 12 months from date of receipt, -20 to -70 °C as supplied.</li> <li>● 1 month, 2 to 8 °C under sterile conditions after reconstitution.</li> <li>● 6 months, -20 to -70 °C under sterile conditions after reconstitution.</li> </ul>

## BACKGROUND

CLEC10A, also known as macrophage galactose/N-acetyl-galactosamine (GalNAc) specific lectin (MGL), CD301, DC-ASGPR, and HML, is a 40 kDa type II transmembrane glycoprotein that belongs to the C-type lectin family (1). Human and rat carry a single gene for CLEC10A/MGL, while mouse has two closely related MGL1 and MGL2 genes. Human CLEC10A/MGL consists of a 39 amino acid (aa) cytoplasmic region, a 21 aa transmembrane segment and a 256 aa extracellular domain (ECD) with one carbohydrate recognition domain (CRD) and a neck region (2). Within the CRD, human CLEC10A/MGL shares 64%-70% aa sequence identity with mouse MGL1, mouse MGL2, and rat MGL. Alternate splicing generates multiple isoforms of human CLEC10A/MGL with 27 aa, 3 aa, and/or 4 aa deletions within the ECD (3, 4). CLEC10A/MGL is expressed on immature myeloid dendritic cells and alternatively activated (tolerogenic) macrophages and is upregulated by the immunosuppressant dexamethasone (3-7). CLEC10A/MGL selectively binds and internalizes terminal nonsialylated  $\alpha$ - or  $\beta$ -linked GalNAc moieties on O-linked carbohydrates, including the Tn carcinoma antigen (2-4, 8, 9). Similar ligand preference is exhibited by mouse MGL2 but not MGL1 (10). CLEC10A/MGL expressed on tolerogenic dendritic cells binds carbohydrate determinants on CD45 (RA, RB, and RC but not RO isoforms) expressed by T, NK, and B cells (6). This interaction inhibits effector T cell activation and induces their apoptosis (6). CLEC10A/MGL also binds the GP envelope glycoprotein on Marburg and Ebola viruses and enhances viral entry and infectivity (11).

## References:

1. Zelensky, A.N. and J.E. Gready (2005) *FEBS J.* **272**:6179.
2. Suzuki, N. *et al.* (1996) *J. Immunol.* **156**:128.
3. Higashi, N. *et al.* (2002) *J. Biol. Chem.* **277**:20686.
4. Valladeau, J. *et al.* (2001) *J. Immunol.* **167**:5767.
5. van Vliet, S.J. *et al.* (2006) *Immunobiology* **211**:577.
6. van Vliet, S.J. *et al.* (2006) *Nat. Immunol.* **7**:1200.
7. Raes, G. *et al.* (2005) *J. Leukoc. Biol.* **77**:321.
8. van Vliet, S.J. *et al.* (2005) *Int. Immunol.* **17**:661.
9. Higashi, N. *et al.* (2002) *Int. Immunol.* **14**:545.
10. Tsuiji, M. *et al.* (2002) *J. Biol. Chem.* **277**:28892.
11. Takada, A. *et al.* (2004) *J. Virol.* **78**:2943.