

## DESCRIPTION

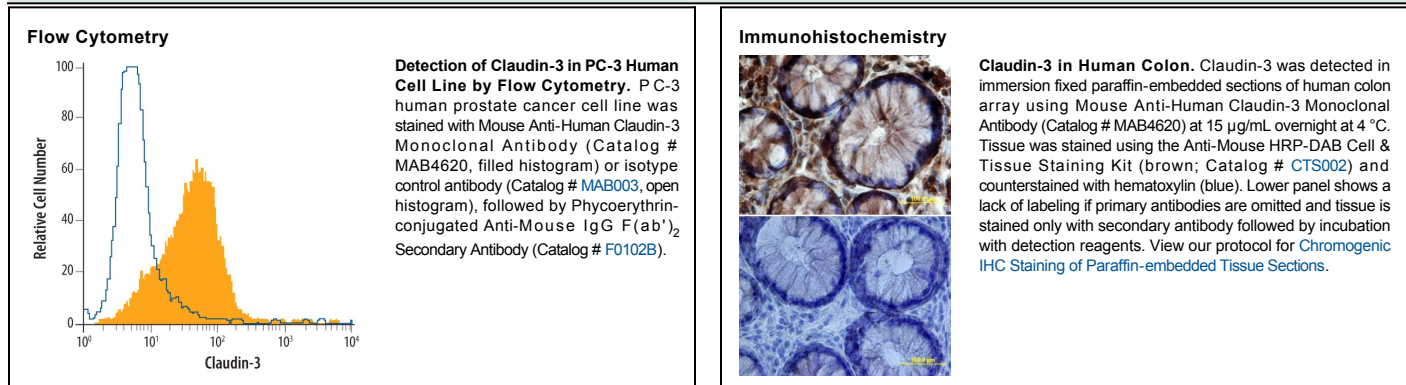
|                           |  |
|---------------------------|--|
| <b>Species Reactivity</b> | Human  |
| <b>Specificity</b>        | Stains human Claudin-3 transfectants but not irrelevant transfectants.   |
| <b>Source</b>             | Monoclonal Mouse IgG <sub>2A</sub> Clone # 385021  |
| <b>Purification</b>       | Protein A or G purified from hybridoma culture supernatant   |
| <b>Immunogen</b>          | HEK293 human embryonic kidney cell line transfected with human Claudin-3 Met1-Val220<br>Accession # O15551   |
| <b>Formulation</b>        | Lyophilized from a 0.2 µm filtered solution in PBS and NaCl with Trehalose. See Certificate of Analysis for details.<br>*Small pack size (-SP) is supplied as a 0.2 µm filtered solution in PBS. |

## APPLICATIONS

**Please Note:** Optimal dilutions should be determined by each laboratory for each application. *General Protocols* are available in the *Technical Information* section on our website.

|                             | <b>Recommended Concentration</b> | <b>Sample</b>  |
|-----------------------------|----------------------------------|--|
| <b>Flow Cytometry</b>       | 2.5 µg/10 <sup>6</sup> cells     | See Below  |
| <b>Immunocytochemistry</b>  | 8-25 µg/mL                       | Immersion fixed PC-3 human prostate cancer cell line |
| <b>Immunohistochemistry</b> | 8-25 µg/mL                       | See Below  |

## DATA



## PREPARATION AND STORAGE

|                                |  |
|--------------------------------|--|
| <b>Reconstitution</b>          | Reconstitute at 0.5 mg/mL in sterile PBS.  |
| <b>Shipping</b>                | The product is shipped at ambient temperature. Upon receipt, store it immediately at the temperature recommended below.<br>*Small pack size (-SP) is shipped with polar packs. Upon receipt, store it immediately at -20 to -70 °C   |
| <b>Stability &amp; Storage</b> | <b>Use a manual defrost freezer and avoid repeated freeze-thaw cycles.</b> <ul style="list-style-type: none"> <li>● 12 months from date of receipt, -20 to -70 °C as supplied.</li> <li>● 1 month, 2 to 8 °C under sterile conditions after reconstitution.</li> <li>● 6 months, -20 to -70 °C under sterile conditions after reconstitution.</li> </ul> |

## BACKGROUND

Claudin-3 is a 23 kDa multipass membrane protein in the claudin family of epithelial tight junction proteins. Claudin-3 is upregulated by EGF and in inflammation and a variety of epithelial cancers. Its expression is lost in the blood brain barrier during pathological disruptions of that structure. Claudin-3 binding to the *Clostridium perfringens* exotoxin induces epithelial cell lysis. Human Claudin-3 shares 91% amino acid sequence identity with mouse and rat Claudin-3.