

## DESCRIPTION

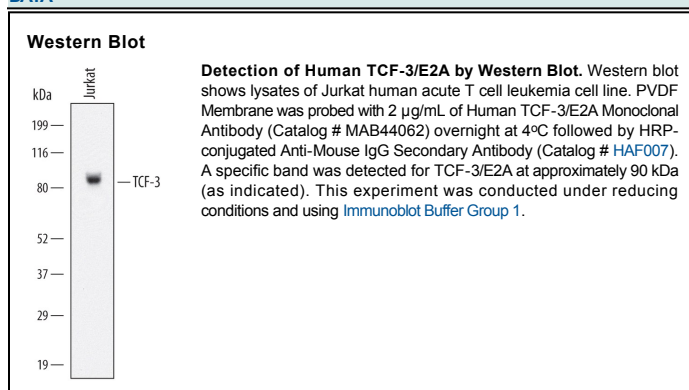
<b>Species Reactivity</b>	Human
<b>Specificity</b>	Detects human TCF-3/E2A in direct ELISAs and Western blots. In direct ELISAs, no cross-reactivity with recombinant human (rh) TCF-1 (aa 116-233), rhTCF-1 (aa 217-358), rhTCF-1 alpha/LEF-1, rhTCF-2, rhTCF-4, rhTCF-12, rhTCF7L1 (aa 151-320), rhTCFL1 (aa 429-581), or rhTCF7L2 (aa 131-300) is observed.
<b>Source</b>	Monoclonal Rat IgG <sub>2A</sub> Clone # 401703
<b>Purification</b>	Protein A or G purified from hybridoma culture supernatant
<b>Immunogen</b>	<i>E. coli</i> -derived recombinant human TCF-3/E2A Gln100-Glu500 Accession # NP_003191
<b>Formulation</b>	Lyophilized from a 0.2 µm filtered solution in PBS with Trehalose. See Certificate of Analysis for details. *Small pack size (-SP) is supplied as a 0.2 µm filtered solution in PBS.

## APPLICATIONS

**Please Note:** Optimal dilutions should be determined by each laboratory for each application. *General Protocols* are available in the *Technical Information* section on our website.

	Recommended Concentration	Sample
<b>Western Blot</b>	2 µg/mL	See Below

## DATA



## PREPARATION AND STORAGE

<b>Reconstitution</b>	Sterile PBS to a final concentration of 0.5 mg/mL.
<b>Shipping</b>	The product is shipped at ambient temperature. Upon receipt, store it immediately at the temperature recommended below. *Small pack size (-SP) is shipped with polar packs. Upon receipt, store it immediately at -20 to -70 °C
<b>Stability &amp; Storage</b>	<b>Use a manual defrost freezer and avoid repeated freeze-thaw cycles.</b> <ul style="list-style-type: none"> <li>● 12 months from date of receipt, -20 to -70 °C as supplied.</li> <li>● 1 month, 2 to 8 °C under sterile conditions after reconstitution.</li> <li>● 6 months, -20 to -70 °C under sterile conditions after reconstitution.</li> </ul>

## BACKGROUND

TCF-3, also known as E2A and ITF-1, is a member of the E protein homeobox family. TCF-3 regulates checkpoints that allow B lineage commitment and B and T cell receptor gene rearrangement. Two isoforms named E12 and E47 are alternatively spliced within the DNA binding and HLH domain. The region of human TCF-3 used as the immunogen, which is identical for E12 and E47, shares 80% and 79% aa identity with mouse and rat TCF-3, respectively.