

DESCRIPTION

Species Reactivity	Human/Mouse
Specificity	Detects human ATG4A in direct ELISAs and Western blots. In direct ELISAs and Western blots, no cross-reactivity with recombinant human ATG4B is observed.
Source	Monoclonal Mouse IgG _{2B} Clone # 514914
Purification	Protein A or G purified from hybridoma culture supernatant
Immunogen	<i>S. frugiperda</i> insect ovarian cell line Sf 21-derived recombinant human ATG4A isoform 1 Glu2-Val398 Accession # Q8WYN0
Formulation	Lyophilized from a 0.2 µm filtered solution in PBS with Trehalose. See Certificate of Analysis for details. *Small pack size (-SP) is supplied as a 0.2 µm filtered solution in PBS.

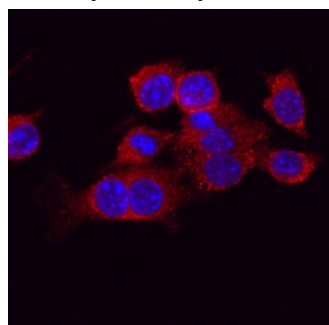
APPLICATIONS

Please Note: Optimal dilutions should be determined by each laboratory for each application. *General Protocols* are available in the *Technical Information* section on our website.

	Recommended Concentration	Sample
Western Blot	1 µg/mL	Recombinant Human ATG4A
Immunocytochemistry	8-25 µg/mL	See Below
Immunoprecipitation	25 µg/mL	Cell lysates spiked with Recombinant Human ATG4A, see our available Western blot detection antibodies

DATA

Immunocytochemistry



ATG4A in RAW 264.7 Mouse Cell Line.

ATG4A was detected in immersion fixed RAW 264.7 mouse monocyte/macrophage cell line using Mouse Anti-Human ATG4A Monoclonal Antibody (Catalog # MAB4324) at 25 µg/mL for 3 hours at room temperature. Cells were stained using the Northern-Lights™ 557-conjugated Anti-Mouse IgG Secondary Antibody (red; Catalog # NL007) and counterstained with DAPI (blue). Specific staining was localized to cytoplasm. View our protocol for [Fluorescent ICC Staining of Non-adherent Cells](#).

PREPARATION AND STORAGE

Reconstitution	Reconstitute at 0.5 mg/mL in sterile PBS.
Shipping	The product is shipped at ambient temperature. Upon receipt, store it immediately at the temperature recommended below. *Small pack size (-SP) is shipped with polar packs. Upon receipt, store it immediately at -20 to -70 °C
Stability & Storage	Use a manual defrost freezer and avoid repeated freeze-thaw cycles. <ul style="list-style-type: none"> ● 12 months from date of receipt, -20 to -70 °C as supplied. ● 1 month, 2 to 8 °C under sterile conditions after reconstitution. ● 6 months, -20 to -70 °C under sterile conditions after reconstitution.

BACKGROUND

Autophagy related protein 4 homolog A (ATG4A), also known as autophagin 2, is a 50 kDa cytosolic cysteine protease mostly found in skeletal muscle and brain. It belongs to the autophagin protein family which is involved in autophagy, a biological process in which endogenous proteins and damaged organelles are destroyed. Human ATG4A shares 100%, 94% and 93% identity with that of chimpanzee, dog and mouse.