

## DESCRIPTION

<b>Species Reactivity</b>	Human
<b>Specificity</b>	Detects human Mesothelin Isoform 1 in direct ELISAs.
<b>Source</b>	Monoclonal Rat IgG <sub>2A</sub> Clone # 420404
<b>Purification</b>	Protein A or G purified from hybridoma culture supernatant
<b>Immunogen</b>	Mouse myeloma cell line NS0-derived recombinant human Mesothelin Isoform 1 Glu296-Gly580 Accession # ABW03459
<b>Formulation</b>	Lyophilized from a 0.2 µm filtered solution in PBS with Trehalose. See Certificate of Analysis for details. *Small pack size (-SP) is supplied as a 0.2 µm filtered solution in PBS.

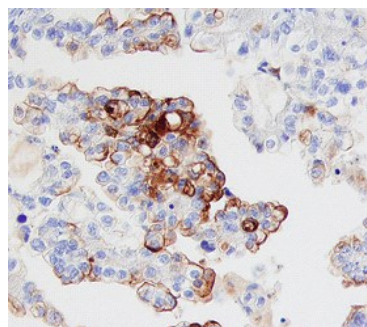
## APPLICATIONS

**Please Note:** Optimal dilutions should be determined by each laboratory for each application. *General Protocols* are available in the *Technical Information* section on our website.

	<b>Recommended Concentration</b>	<b>Sample</b>
<b>Immunohistochemistry</b>	8-25 µg/mL	See Below

## DATA

### Immunohistochemistry



**Mesothelin in Human Ovarian Cancer Tissue.** Mesothelin was detected in immersion fixed paraffin-embedded sections of human ovarian cancer tissue using 5 µg/mL Rat Anti-Human Mesothelin Isoform 1 Monoclonal Antibody (Catalog # MAB32651) overnight at 4 °C. Before incubation with the primary antibody tissue was subjected to heat-induced epitope retrieval using Antigen Retrieval Reagent-Basic (Catalog # CTS013). Tissue was stained with the Anti-Rat HRP-DAB Cell & Tissue Staining Kit (brown; Catalog # CTS017) and counterstained with hematoxylin (blue). View our protocol for [Chromogenic IHC Staining of Paraffin-embedded Tissue Sections](#).

## PREPARATION AND STORAGE

<b>Reconstitution</b>	Reconstitute at 0.5 mg/mL in sterile PBS.
<b>Shipping</b>	The product is shipped at ambient temperature. Upon receipt, store it immediately at the temperature recommended below. *Small pack size (-SP) is shipped with polar packs. Upon receipt, store it immediately at -20 to -70 °C
<b>Stability &amp; Storage</b>	<b>Use a manual defrost freezer and avoid repeated freeze-thaw cycles.</b> <ul style="list-style-type: none"> <li>● 12 months from date of receipt, -20 to -70 °C as supplied.</li> <li>● 1 month, 2 to 8 °C under sterile conditions after reconstitution.</li> <li>● 6 months, -20 to -70 °C under sterile conditions after reconstitution.</li> </ul>

## BACKGROUND

Mesothelin is a 40 kDa glycosylphosphatidylinositol-anchored glycoprotein that is expressed on mesothelial cells in the pleura, pericardium and peritoneum and overexpressed in mesotheliomas and ovarian or pancreatic adenocarcinoma. Mesothelin is a product of the CAK-1 gene, which also encodes megakaryocyte-potentiating factor (MPF). Mature human mesothelin shares 60% amino acid identity with either mouse or rat mesothelin. Two variant forms exist; variant 1 has an eight amino acid (1 kDa) insertion and is rarely expressed, while variant 2 is a truncated form secreted in the majority of ovarian cancers but rarely found in normal individuals.