

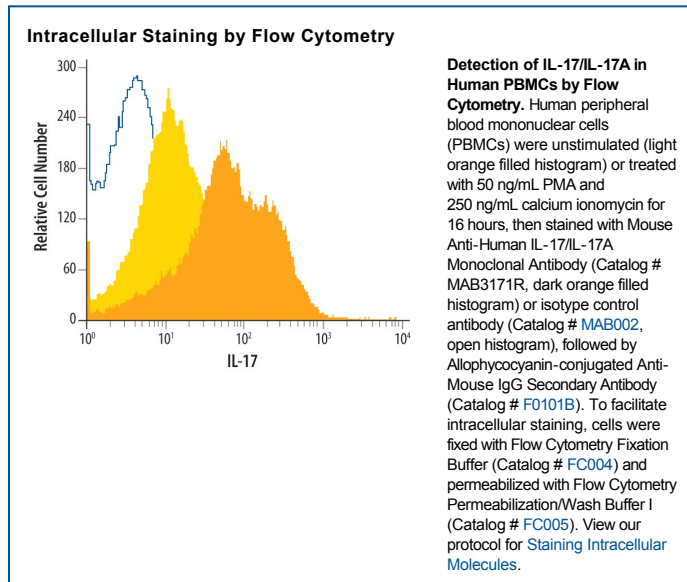
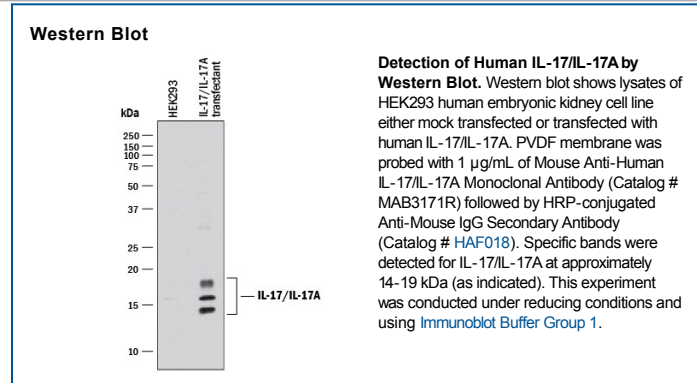
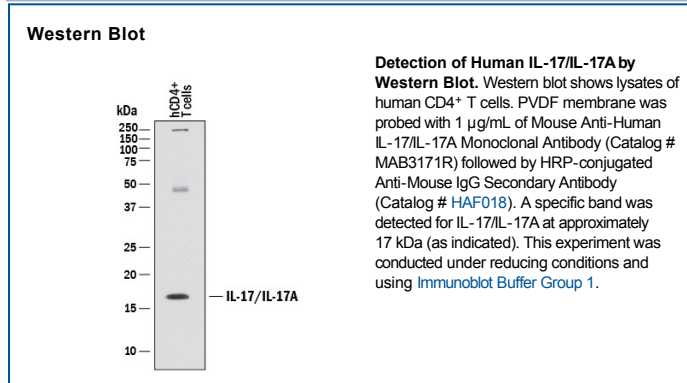
DESCRIPTION	
<b>Species Reactivity</b>	Human
<b>Specificity</b>	Detects human IL-17 in direct ELISAs and Western blots.
<b>Source</b>	Recombinant Monoclonal Mouse IgG <sub>1</sub> Clone # 41802R
<b>Purification</b>	Protein A or G purified from cell culture supernatant
<b>Immunogen</b>	<i>E. coli</i> -derived recombinant human IL-17 Ile20-Ala155 Accession # Q16552
<b>Formulation</b>	Lyophilized from a 0.2 µm filtered solution in PBS with Trehalose. See Certificate of Analysis for details. *Small pack size (-SP) is supplied either lyophilized or as a 0.2 µm filtered solution in PBS.

**APPLICATIONS**

Please Note: Optimal dilutions should be determined by each laboratory for each application. General Protocols are available in the Technical Information section on our website.

	Recommended Concentration	Sample
<b>Western Blot</b>	1 µg/mL	See Below
<b>Intracellular Staining by Flow Cytometry</b>	0.25 µg/10 <sup>6</sup> cells	See Below

**DATA**



## PREPARATION AND STORAGE

**Reconstitution** Reconstitute at 0.5 mg/mL in sterile PBS.

**Shipping** The product is shipped at ambient temperature. Upon receipt, store it immediately at the temperature recommended below.  
\*Small pack size (-SP) is shipped with polar packs. Upon receipt, store it immediately at -20 to -70 °C

**Stability & Storage** Use a manual defrost freezer and avoid repeated freeze-thaw cycles.

- 12 months from date of receipt, -20 to -70 °C as supplied.
- 1 month, 2 to 8 °C under sterile conditions after reconstitution.
- 6 months, -20 to -70 °C under sterile conditions after reconstitution.

## BACKGROUND

Interleukin-17 (IL-17) is a pro-inflammatory cytokine secreted by activated T cells. It is the prototype member of the IL-17 family that also includes IL-17B, C, D, E, and F.