

## DESCRIPTION

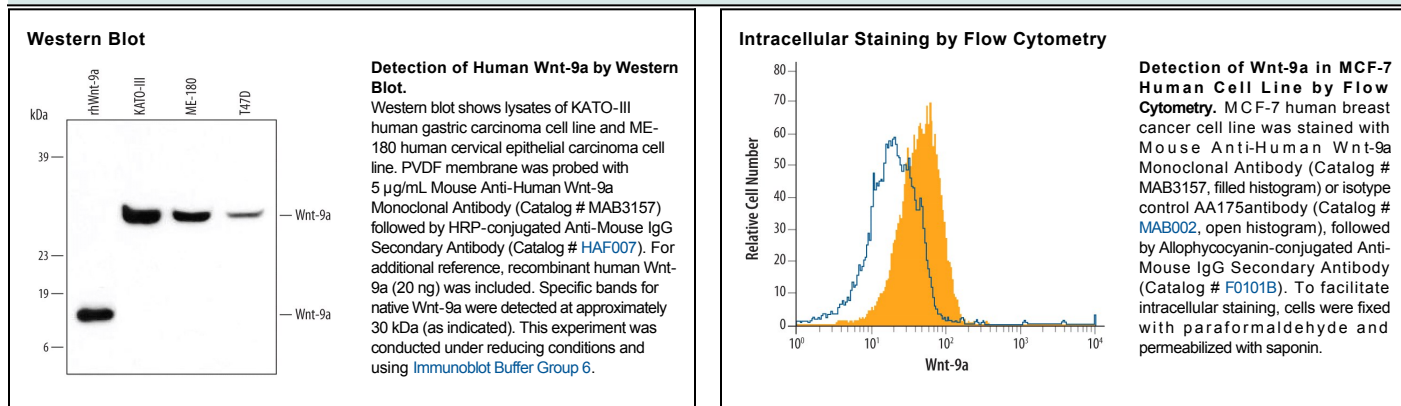
<b>Species Reactivity</b>	Human
<b>Specificity</b>	Detects human Wnt-9a in direct ELISAs and Western blots. In direct ELISAs, no cross-reactivity with recombinant human Wnt-2, -3a, -6, -7a, -7b, recombinant mouse Wnt-1, -2b, -4, -5a, -5b, -8a, -8b, -9b, -10a, -10b, -11, or -16 is observed.
<b>Source</b>	Monoclonal Mouse IgG <sub>1</sub> Clone # 326711
<b>Purification</b>	Protein A or G purified from hybridoma culture supernatant
<b>Immunogen</b>	<i>E. coli</i> -derived recombinant human Wnt-9a Pro48-Glu92 & Arg231-Phe304 Accession # O14904.2
<b>Formulation</b>	Lyophilized from a 0.2 µm filtered solution in PBS with Trehalose. See Certificate of Analysis for details. *Small pack size (-SP) is supplied as a 0.2 µm filtered solution in PBS.

## APPLICATIONS

**Please Note:** Optimal dilutions should be determined by each laboratory for each application. *General Protocols* are available in the *Technical Information* section on our website.

	Recommended Concentration	Sample
<b>Western Blot</b>	5 µg/mL	See Below
<b>Intracellular Staining by Flow Cytometry</b>	2.5 µg/10 <sup>6</sup> cells	See Below

## DATA



## PREPARATION AND STORAGE

<b>Reconstitution</b>	Reconstitute at 0.5 mg/mL in sterile PBS.
<b>Shipping</b>	The product is shipped at ambient temperature. Upon receipt, store it immediately at the temperature recommended below. *Small pack size (-SP) is shipped with polar packs. Upon receipt, store it immediately at -20 to -70 °C
<b>Stability &amp; Storage</b>	<b>Use a manual defrost freezer and avoid repeated freeze-thaw cycles.</b> <ul style="list-style-type: none"> <li>● 12 months from date of receipt, -20 to -70 °C as supplied.</li> <li>● 1 month, 2 to 8 °C under sterile conditions after reconstitution.</li> <li>● 6 months, -20 to -70 °C under sterile conditions after reconstitution.</li> </ul>

## BACKGROUND

Wnt-9a (Wingless related integration site family member 9a, formerly Wnt-14) is a member of the Wnt family, which are ligands for frizzled family receptors. Wnt-9a is a secreted glycoprotein expressed in skeletal muscle and heart as well as in B-CLL and gastric, pancreatic and breast cancer cells. Human Wnt-9a shares 98% aa sequence identity with mouse and rat Wnt-9a.