

DESCRIPTION

Species Reactivity	Human
Specificity	Detects human CCL2/JE/MCP-1 in ELISAs and Western blots. In ELISAs, does not cross-react with recombinant human CCL1, 3, 4, 5, 7, 8, 11, 13, 14, 15, 16, 17, 18, 19, 20, 21, 22, 23, 24, 25, 26, recombinant mouse CCL1, 2, 3, 4, 5, 6, 7, 9/10/MIP-1y, 11, 12, 17, 19, 20, 21, 22, 24, 25, or recombinant rat CCL20.
Source	Monoclonal Mouse IgG _{2B} Clone # 23002
Purification	Protein A or G purified from ascites
Immunogen	<i>E. coli</i> -derived recombinant human CCL2/MCP-1 Gln24-Thr99 Accession # P13500
Formulation	Lyophilized from a 0.2 µm filtered solution in PBS with Trehalose. See Certificate of Analysis for details. *Small pack size (-SP) is supplied as a 0.2 µm filtered solution in PBS.

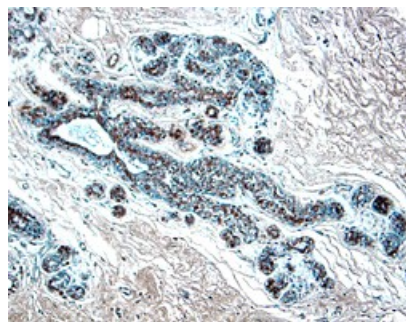
APPLICATIONS

Please Note: Optimal dilutions should be determined by each laboratory for each application. *General Protocols* are available in the *Technical Information* section on our website.

	Recommended Concentration	Sample
Immunohistochemistry	8-25 µg/mL	See Below

DATA

Immunohistochemistry



CCL2/JE/MCP-1 in Human Breast Cancer Tissue.
CCL2/JE/MCP-1 was detected in immersion fixed paraffin-embedded sections of human breast cancer tissue using 25 µg/mL Mouse Anti-Human CCL2/JE/MCP-1 Monoclonal Antibody (Catalog # MAB2791) overnight at 4 °C. Tissue was stained with the Anti-Mouse HRP-DAB Cell & Tissue Staining Kit (brown; Catalog # CTS002) and counterstained with hematoxylin (blue). View our protocol for [Chromogenic IHC Staining of Paraffin-embedded Tissue Sections](#).

PREPARATION AND STORAGE

Reconstitution	Reconstitute at 0.5 mg/mL in sterile PBS.
Shipping	The product is shipped at ambient temperature. Upon receipt, store it immediately at the temperature recommended below. *Small pack size (-SP) is shipped with polar packs. Upon receipt, store it immediately at -20 to -70 °C
Stability & Storage	Use a manual defrost freezer and avoid repeated freeze-thaw cycles. <ul style="list-style-type: none"> ● 12 months from date of receipt, -20 to -70 °C as supplied. ● 1 month, 2 to 8 °C under sterile conditions after reconstitution. ● 6 months, -20 to -70 °C under sterile conditions after reconstitution.

BACKGROUND

MCP-1 is a β-chemokine that has been designated CCL2. It is produced by a variety of cell types and is chemotactic for monocytes.