

## DESCRIPTION

<b>Species Reactivity</b>	Mouse
<b>Specificity</b>	Detects mouse Integrin $\beta$ 1/CD29 in direct ELISAs and Western blots. In Western blots, no cross-reactivity with recombinant human Integrin $\beta$ 1, recombinant mouse (rm) Integrin $\beta$ 2, rmIntegrin $\beta$ 3, rmIntegrin $\beta$ 4, or rmIntegrin $\beta$ 6 is observed.
<b>Source</b>	Monoclonal Rat IgG <sub>2A</sub> Clone # 265917
<b>Purification</b>	Protein A or G purified from hybridoma culture supernatant
<b>Immunogen</b>	Chinese hamster ovary cell line CHO-derived recombinant mouse Integrin $\beta$ 1/CD29 Gln21-Asp728 Accession # P09055
<b>Formulation</b>	Lyophilized from a 0.2 $\mu$ m filtered solution in PBS with Trehalose. See Certificate of Analysis for details. *Small pack size (-SP) is supplied as a 0.2 $\mu$ m filtered solution in PBS.

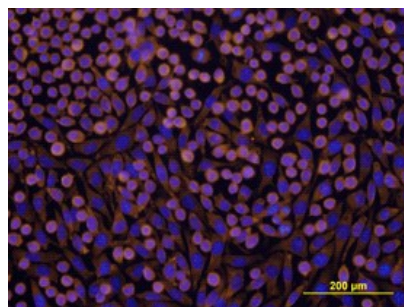
## APPLICATIONS

**Please Note:** Optimal dilutions should be determined by each laboratory for each application. *General Protocols* are available in the *Technical Information* section on our website.

	<b>Recommended Concentration</b>	<b>Sample</b>
<b>Western Blot</b>	1 $\mu$ g/mL	Recombinant Mouse Integrin $\beta$ 1/CD29 under non-reducing conditions only
<b>Flow Cytometry</b>	2.5 $\mu$ g/10 <sup>6</sup> cells	B16-F10 mouse melanoma cell line
<b>Immunocytochemistry</b>	8-25 $\mu$ g/mL	See Below
<b>Immunohistochemistry</b>	8-25 $\mu$ g/mL	Perfusion fixed frozen sections of mouse spinal cord

## DATA

### Immunocytochemistry



#### Integrin $\beta$ 1/CD29 in L-929 Mouse Cell Line.

Integrin  $\beta$ 1/CD29 was detected in immersion fixed L-929 mouse fibroblast cell line using Rat Anti-Mouse Integrin  $\beta$ 1/CD29 Monoclonal Antibody (Catalog # MAB2405) at 10  $\mu$ g/mL for 3 hours at room temperature. Cells were stained using the NorthernLights™ 557-conjugated Anti-Rat IgG Secondary Antibody (yellow; Catalog # NL013) and counterstained with DAPI (blue). View our protocol for [Fluorescent ICC Staining of Cells on Coverslips](#).

## PREPARATION AND STORAGE

<b>Reconstitution</b>	Reconstitute at 0.5 mg/mL in sterile PBS.
<b>Shipping</b>	The product is shipped at ambient temperature. Upon receipt, store it immediately at the temperature recommended below. *Small pack size (-SP) is shipped with polar packs. Upon receipt, store it immediately at -20 to -70 °C
<b>Stability &amp; Storage</b>	<b>Use a manual defrost freezer and avoid repeated freeze-thaw cycles.</b> <ul style="list-style-type: none"> <li>● 12 months from date of receipt, -20 to -70 °C as supplied.</li> <li>● 1 month, 2 to 8 °C under sterile conditions after reconstitution.</li> <li>● 6 months, -20 to -70 °C under sterile conditions after reconstitution.</li> </ul>

## BACKGROUND

The Integrin  $\beta$ 1 subunit, also known as CD29, associates with multiple distinct Integrin  $\alpha$  subunits. The Integrin  $\beta$ 1 subunit has a broad tissue distribution with the exception of erythrocytes.