

## DESCRIPTION

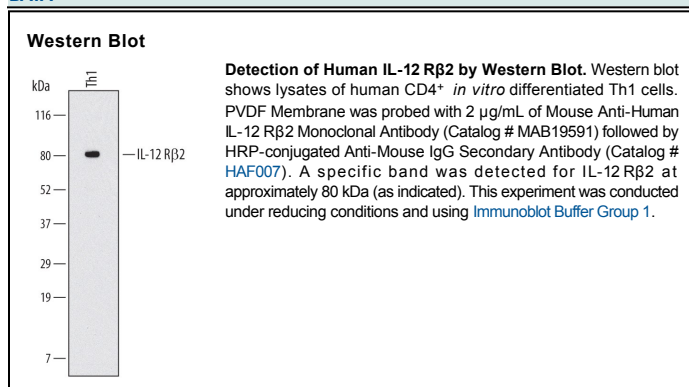
<b>Species Reactivity</b>	Human
<b>Specificity</b>	Detects human IL-12 Rβ2 in direct ELISAs and Western blots. In direct ELISAs, no cross-reactivity with recombinant human IL-12 Rβ1 or recombinant mouse IL-12 Rβ1 is observed.
<b>Source</b>	Monoclonal Mouse IgG <sub>2A</sub> Clone # 622509
<b>Purification</b>	Protein A or G purified from hybridoma culture supernatant
<b>Immunogen</b>	Mouse myeloma cell line NS0-derived recombinant human IL-12 Rβ2 Lys24-Cys622 Accession # Q99665
<b>Formulation</b>	Lyophilized from a 0.2 μm filtered solution in PBS with Trehalose. See Certificate of Analysis for details. *Small pack size (-SP) is supplied as a 0.2 μm filtered solution in PBS.

## APPLICATIONS

**Please Note:** Optimal dilutions should be determined by each laboratory for each application. *General Protocols* are available in the *Technical Information* section on our website.

	Recommended Concentration	Sample
<b>Western Blot</b>	2 μg/mL	See Below

## DATA



## PREPARATION AND STORAGE

<b>Reconstitution</b>	Sterile PBS to a final concentration of 0.5 mg/mL.
<b>Shipping</b>	The product is shipped at ambient temperature. Upon receipt, store it immediately at the temperature recommended below. *Small pack size (-SP) is shipped with polar packs. Upon receipt, store it immediately at -20 to -70 °C
<b>Stability &amp; Storage</b>	<b>Use a manual defrost freezer and avoid repeated freeze-thaw cycles.</b> <ul style="list-style-type: none"> <li>● 12 months from date of receipt, -20 to -70 °C as supplied.</li> <li>● 1 month, 2 to 8 °C under sterile conditions after reconstitution.</li> <li>● 6 months, -20 to -70 °C under sterile conditions after reconstitution.</li> </ul>

## BACKGROUND

IL-12 Rβ2 is a type I cytokine receptor family protein that associates with IL 12 Rβ1 to form a functional high affinity receptor complex for IL-12. The extracellular region of IL 12 Rβ2 contains five fibronectin type 3 domains. The cytoplasmic region is alternatively spliced, giving rise to two isoforms. IL-12 Rβ2 is up-regulated in Th1 cells during inflammatory responses. The extracellular regions of human and mouse IL-12 Rβ2 share 69% amino acid sequence identity.