

## DESCRIPTION

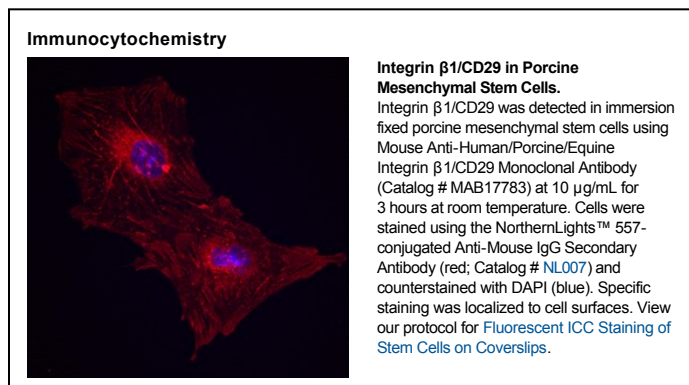
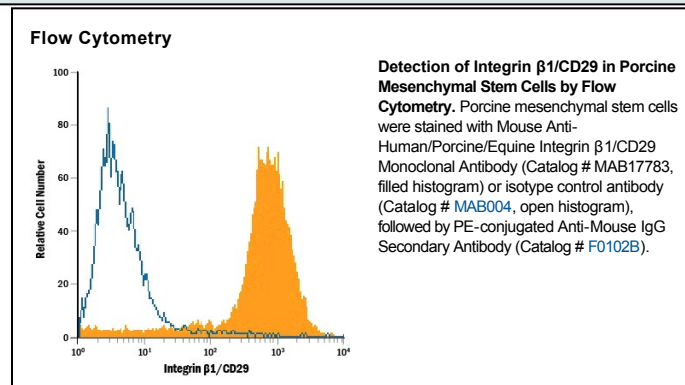
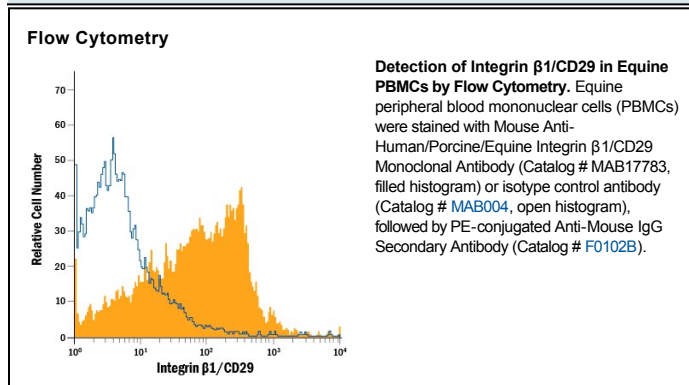
<b>Species Reactivity</b>	Human/Porcine/Equine
<b>Specificity</b>	Detects human Integrin $\beta$ 1/CD29 in direct ELISAs and Western blots. In Western blots, no cross-reactivity with recombinant human Integrin $\beta$ 3, $\beta$ 4, $\beta$ 5, $\beta$ 8, recombinant mouse Integrin $\beta$ 1, $\beta$ 2, $\beta$ 6, or $\beta$ 7 is observed.
<b>Source</b>	Monoclonal Mouse IgG <sub>2B</sub> Clone # 419127
<b>Purification</b>	Protein A or G purified from hybridoma culture supernatant
<b>Immunogen</b>	Chinese hamster ovary cell line CHO-derived recombinant human Integrin $\beta$ 1/CD29 Gln21-Asp728 (predicted) Accession # P05556
<b>Formulation</b>	Lyophilized from a 0.2 $\mu$ m filtered solution in PBS with Trehalose. See Certificate of Analysis for details. *Small pack size (-SP) is supplied as a 0.2 $\mu$ m filtered solution in PBS.

## APPLICATIONS

**Please Note:** Optimal dilutions should be determined by each laboratory for each application. *General Protocols* are available in the *Technical Information* section on our website.

	Recommended Concentration	Sample
<b>Western Blot</b>	1 $\mu$ g/mL	Recombinant Human Integrin $\beta$ 1/CD29 under non-reducing conditions only
<b>Flow Cytometry</b>	2.5 $\mu$ g/10 <sup>6</sup> cells	See Below
<b>Immunocytochemistry</b>	8-25 $\mu$ g/mL	See Below

## DATA



## PREPARATION AND STORAGE

<b>Reconstitution</b>	Reconstitute at 0.5 mg/mL in sterile PBS.
<b>Shipping</b>	The product is shipped at ambient temperature. Upon receipt, store it immediately at the temperature recommended below. *Small pack size (-SP) is shipped with polar packs. Upon receipt, store it immediately at -20 to -70 °C
<b>Stability &amp; Storage</b>	<b>Use a manual defrost freezer and avoid repeated freeze-thaw cycles.</b> <ul style="list-style-type: none"> <li>● 12 months from date of receipt, -20 to -70 °C as supplied.</li> <li>● 1 month, 2 to 8 °C under sterile conditions after reconstitution.</li> <li>● 6 months, -20 to -70 °C under sterile conditions after reconstitution.</li> </ul>

## BACKGROUND

The Integrin  $\beta$ 1 subunit, also known as VLA- $\beta$  chain or CD29, associates with at least ten different Integrin  $\alpha$  subunits. Within aa 21-728, human Integrin  $\beta$ 1 subunit is 94% aa identical to pig and sheep Integrin  $\beta$ 1 subunits.