

DESCRIPTION

Species Reactivity	Human
Specificity	Detects human Integrin β 1/CD29 in direct ELISAs and Western blots.
Source	Monoclonal Mouse IgG ₁ Clone # 4B7R
Purification	Protein A or G purified from hybridoma culture supernatant
Immunogen	Ocular melanoma cell line V+B2
Formulation	Lyophilized from a 0.2 μ m filtered solution in PBS with Trehalose. See Certificate of Analysis for details. *Small pack size (-SP) is supplied as a 0.2 μ m filtered solution in PBS.

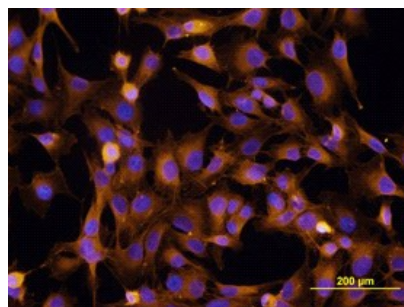
APPLICATIONS

Please Note: Optimal dilutions should be determined by each laboratory for each application. *General Protocols* are available in the *Technical Information* section on our website.

	Recommended Concentration	Sample
Western Blot	1 μ g/mL	Recombinant Human Integrin β 1/CD29 under non-reducing conditions only
Flow Cytometry	2.5 μ g/10 ⁶ cells	Human peripheral blood mononuclear cells
Immunocytochemistry	8-25 μ g/mL	See Below
Immunohistochemistry	8-25 μ g/mL	Immersion fixed paraffin-embedded sections of human skin cancer tissue
Immunoprecipitation	Marshall, J.F. <i>et al.</i> (1998) <i>Br. J. Cancer</i> 77 :522.	

DATA

Immunocytochemistry



Integrin β 1/CD29 in MG-63 Human Cell Line.

Integrin β 1/CD29 was detected in immersion fixed MG-63 human osteosarcoma cell line using Mouse Anti-Human Integrin β 1/CD29 Monoclonal Antibody (Catalog # MAB1778) at 10 μ g/mL for 3 hours at room temperature. Cells were stained using the NorthernLights™ 557-conjugated Anti-Mouse IgG Secondary Antibody (yellow; Catalog # NL007) and counterstained with DAPI (blue). View our protocol for [Fluorescent ICC Staining of Cells on Coverslips](#).

PREPARATION AND STORAGE

Reconstitution	Reconstitute at 0.5 mg/mL in sterile PBS.
Shipping	The product is shipped at ambient temperature. Upon receipt, store it immediately at the temperature recommended below. *Small pack size (-SP) is shipped with polar packs. Upon receipt, store it immediately at -20 to -70 °C
Stability & Storage	Use a manual defrost freezer and avoid repeated freeze-thaw cycles. <ul style="list-style-type: none"> ● 12 months from date of receipt, -20 to -70 °C as supplied. ● 1 month, 2 to 8 °C under sterile conditions after reconstitution. ● 6 months, -20 to -70 °C under sterile conditions after reconstitution.

BACKGROUND

The Integrin β 1 subunit, also known as CD29, associates with at least ten different Integrin α subunits (1).

References:

- Wayner, E.A. and W.G. Carter (1987) *J. Cell Biol.* **105**:1873.