

DESCRIPTION

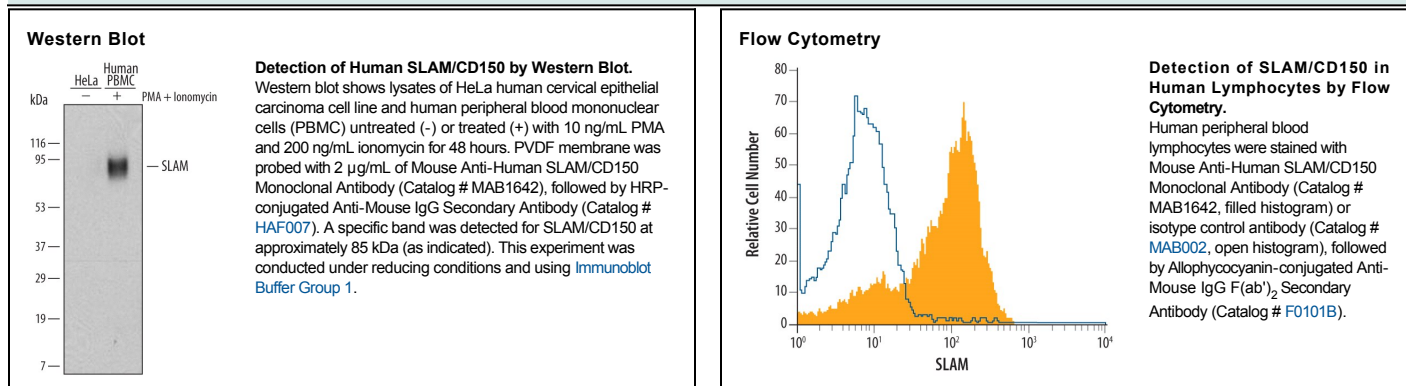
Species Reactivity	Human
Specificity	Detects human SLAM/CD150 in direct ELISAs and Western blots.
Source	Monoclonal Mouse IgG ₁ Clone # 542301
Purification	Protein A or G purified from hybridoma culture supernatant
Immunogen	Mouse myeloma cell line NS0-derived recombinant human SLAM/CD150 Ala21-Pro237 Accession # Q13291
Formulation	Lyophilized from a 0.2 µm filtered solution in PBS with Trehalose. See Certificate of Analysis for details. *Small pack size (-SP) is supplied as a 0.2 µm filtered solution in PBS.

APPLICATIONS

Please Note: Optimal dilutions should be determined by each laboratory for each application. *General Protocols* are available in the *Technical Information* section on our website.

	Recommended Concentration	Sample
Western Blot	2 µg/mL	See Below
Flow Cytometry	2.5 µg/10 ⁶ cells	See Below

DATA



PREPARATION AND STORAGE

Reconstitution	Reconstitute at 0.5 mg/mL in sterile PBS.
Shipping	The product is shipped at ambient temperature. Upon receipt, store it immediately at the temperature recommended below. *Small pack size (-SP) is shipped with polar packs. Upon receipt, store it immediately at -20 to -70 °C
Stability & Storage	Use a manual defrost freezer and avoid repeated freeze-thaw cycles. <ul style="list-style-type: none"> • 12 months from date of receipt, -20 to -70 °C as supplied. • 1 month, 2 to 8 °C under sterile conditions after reconstitution. • 6 months, -20 to -70 °C under sterile conditions after reconstitution.

BACKGROUND

Signaling lymphocytic activation molecule (SLAM, SLAMF1; CD150) was the first identified of a family of type I transmembrane (TM) lymphocyte activating receptors. SLAM homotypic adhesion bidirectionally stimulates T and B cells. SLAM is also expressed by hematopoietic stem cells, dendritic cells and platelets and is a T cell measles virus receptor. The 70 kDa glycoprotein contains a 216 amino acid (aa) extracellular domain (ECD) with one C2 type and one V type Ig-like domain, a 20 aa TM sequence and a 76 aa SH2-binding cytoplasmic domain. One splice variant has a shorter cytoplasmic tail and another lacks the TM sequence and is secreted. Human and mouse SLAM ECD share 60% aa identity.