

DESCRIPTION

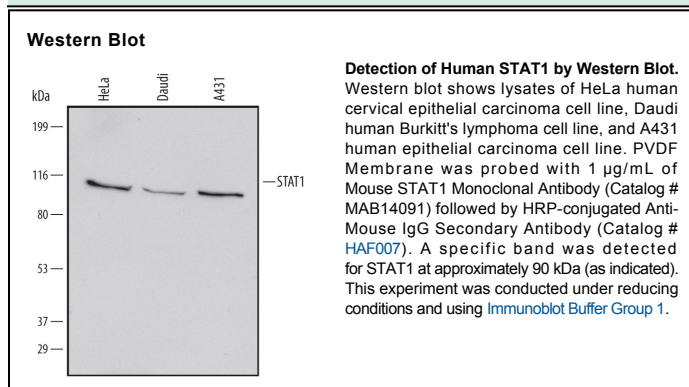
Species Reactivity	Human
Specificity	Detects endogenous human STAT1 in Western blots.
Source	Monoclonal Mouse IgG _{2B} Clone # 655210
Purification	Protein A or G purified from hybridoma culture supernatant
Immunogen	<i>E. coli</i> -derived recombinant human STAT1 Ala687-Val750 Accession # P42224
Formulation	Lyophilized from a 0.2 µm filtered solution in PBS with Trehalose. See Certificate of Analysis for details. *Small pack size (-SP) is supplied as a 0.2 µm filtered solution in PBS.

APPLICATIONS

Please Note: Optimal dilutions should be determined by each laboratory for each application. *General Protocols* are available in the *Technical Information* section on our website.

	Recommended Concentration	Sample
Western Blot	1 µg/mL	See Below

DATA



PREPARATION AND STORAGE

Reconstitution	Sterile PBS to a final concentration of 0.5 mg/mL.
Shipping	The product is shipped at ambient temperature. Upon receipt, store it immediately at the temperature recommended below. *Small pack size (-SP) is shipped with polar packs. Upon receipt, store it immediately at -20 to -70 °C
Stability & Storage	Use a manual defrost freezer and avoid repeated freeze-thaw cycles. <ul style="list-style-type: none"> • 12 months from date of receipt, -20 to -70 °C as supplied. • 1 month, 2 to 8 °C under sterile conditions after reconstitution. • 6 months, -20 to -70 °C under sterile conditions after reconstitution.

BACKGROUND

STAT1 is a member of the STAT family of cytoplasmic transcription factors that mediate cytokine, growth factor and hormone receptor signal transduction. STAT1 is associated with type I and II interferon signaling. Phosphorylation of STAT1a at Y701 leads to dimerization and translocation to the nucleus to activate gene transcription. Human STAT1 shows 93% and 94% aa identity with mouse and rat STAT1, respectively, over the region used as an immunogen. This region is identical between isoforms STAT1a (91 kDa) and STAT1b (84 kDa).