

DESCRIPTION

Species Reactivity	Human
Specificity	Detects liver, bone and kidney Alkaline Phosphatase/ALPL from human tissue (2).
Source	Monoclonal Mouse IgG ₁ Clone # B4-78
Purification	Protein A or G purified from ascites
Immunogen	Human liver, bone and kidney-derived Alkaline Phosphatase/ALPL
Formulation	Lyophilized from a 0.2 µm filtered solution in PBS with Trehalose. See Certificate of Analysis for details. *Small pack size (-SP) is supplied as a 0.2 µm filtered solution in PBS.

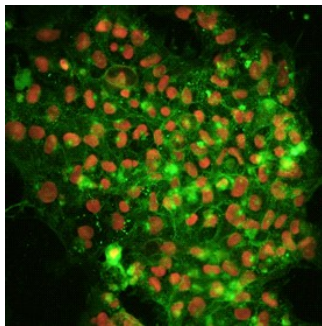
APPLICATIONS

Please Note: Optimal dilutions should be determined by each laboratory for each application. *General Protocols* are available in the *Technical Information* section on our website.

	Recommended Concentration	Sample
Flow Cytometry	2.5 µg/10 ⁶ cells	Human whole blood granulocytes
Immunocytochemistry	8-25 µg/mL	See Below
Immunohistochemistry	8-25 µg/mL	Immersion fixed paraffin-embedded sections of human liver and kidney

DATA

Immunocytochemistry



Alkaline Phosphatase and Oct-3/4 in BG01V Human Stem Cells. Alkaline Phosphatase/ALPL and Oct-3/4 were detected in human BG01V embryonic stem cells using 10 µg/mL Mouse Anti-Human Alkaline Phosphatase/ALPL Monoclonal Antibody (Catalog # MAB1448) and 10 µg/mL Human Oct-3/4 Antigen Affinity-purified Polyclonal Antibody (Catalog # AF1759). Cells were incubated with primary antibodies for 3 hours at room temperature. Cells were stained for Alkaline Phosphatase/ALPL using the NorthernLights™ 557-conjugated Anti-Mouse IgG Secondary Antibody (pseudo-stained green; Catalog # NL007), and stained for Oct-3/4 using the NorthernLights 637-conjugated Anti-Goat IgG Secondary Antibody (red; Catalog # NL002). View our protocol for [Fluorescent ICC Staining of Cells on Coverslips](#).

PREPARATION AND STORAGE

Reconstitution	Reconstitute at 0.5 mg/mL in sterile PBS.
Shipping	The product is shipped at ambient temperature. Upon receipt, store it immediately at the temperature recommended below. *Small pack size (-SP) is shipped with polar packs. Upon receipt, store it immediately at -20 to -70 °C
Stability & Storage	Use a manual defrost freezer and avoid repeated freeze-thaw cycles. <ul style="list-style-type: none"> ● 12 months from date of receipt, -20 to -70 °C as supplied. ● 1 month, 2 to 8 °C under sterile conditions after reconstitution. ● 6 months, -20 to -70 °C under sterile conditions after reconstitution.

BACKGROUND

The liver, bone and kidney Alkaline Phosphatase, also known as tissue non-specific Alkaline Phosphatase, is a glycosyl phosphatidylinositol (GPI) anchored protein. Human liver/bone/kidney Alkaline Phosphatase shares 90% amino acid sequence homology with the mouse enzyme.

References:

1. Lawson, G.M. *et al.* (1985) Clin. Chem. **31**:381.
2. Gronthos, S. *et al.* (1999) J. Bone Miner. Res. **14**:47.
3. Dorheim, M.A. *et al.* (1993) J. Cell Physiol. **154**:317.