

DESCRIPTION

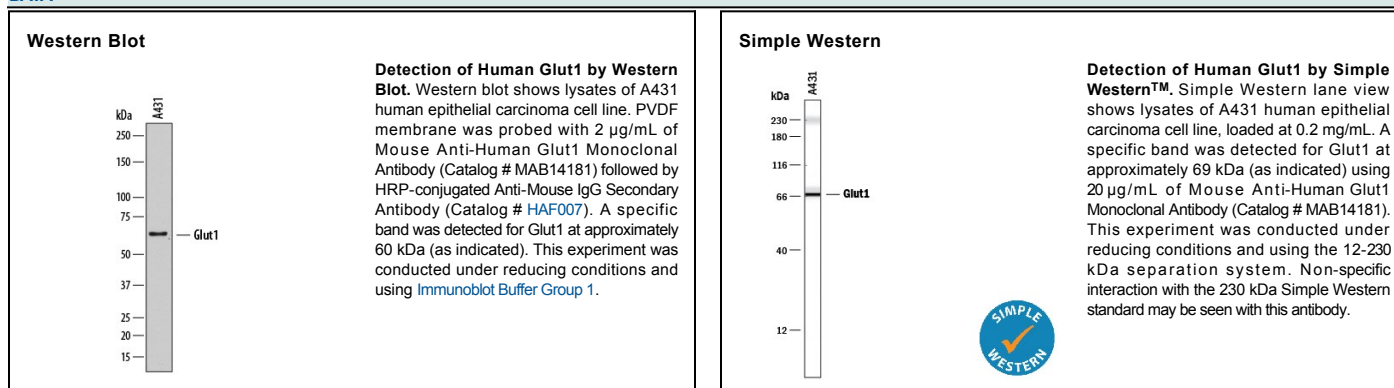
Species Reactivity	Human
Specificity	Detects human Glut1 in ELISAs.
Source	Monoclonal Mouse IgG ₃ Clone # 202921
Purification	Protein A or G purified from hybridoma culture supernatant
Immunogen	NS0 mouse myeloma cell line transfected with human Glut1 Met1-Val492 Accession # AAA52571
Formulation	Lyophilized from a 0.2 µm filtered solution in PBS with Trehalose. See Certificate of Analysis for details. *Small pack size (-SP) is supplied as a 0.2 µm filtered solution in PBS.

APPLICATIONS

Please Note: Optimal dilutions should be determined by each laboratory for each application. *General Protocols* are available in the *Technical Information* section on our website.

	Recommended Concentration	Sample
Western Blot	2 µg/mL	See Below
Simple Western	20 µg/mL	See Below

DATA



PREPARATION AND STORAGE

Reconstitution	Reconstitute at 0.5 mg/mL in sterile PBS.
Shipping	The product is shipped at ambient temperature. Upon receipt, store it immediately at the temperature recommended below. *Small pack size (-SP) is shipped with polar packs. Upon receipt, store it immediately at -20 to -70 °C
Stability & Storage	<p>Use a manual defrost freezer and avoid repeated freeze-thaw cycles.</p> <ul style="list-style-type: none"> ● 12 months from date of receipt, -20 to -70 °C as supplied. ● 1 month, 2 to 8 °C under sterile conditions after reconstitution. ● 6 months, -20 to -70 °C under sterile conditions after reconstitution.

BACKGROUND

Glut1 belongs to the facilitative glucose transport protein family that comprises 13 members. It is an integral membrane protein with 12 transmembrane domains and is expressed at variable levels in many tissues including brain endothelial cells, CD8⁺ T cells, and erythrocytes (1-5). Glut1 is a major glucose transporter that mediates glucose transport across the mammalian blood-brain barrier.

References:

1. Mueckler, M. *et al.* 1994, *Eur. J. Biochem.* **219**:713.
2. Meuckler, M. *et al.* 1985, *Science* **229**:941.
3. Jones, K.S. *et al.* 2006, *J. Virol.* 8291.
4. Takenouchi, N. *et al.* 2007, *J. Virol.* 1506.
5. Kinet, S. *et al.* 2007, *Retrovirology* **4**:31.