

DESCRIPTION

Species Reactivity	Human/Mouse/Rat/Chicken
Specificity	Recognizes the A2B5 cell surface ganglioside epitope found on type II astrocytes, cells involved in gliogenesis, and cells committed to the oligodendrocyte lineage (1-4).
Source	Monoclonal Mouse IgM Clone # 105
Purification	IgM-specific Affinity-purified from hybridoma culture supernatant
Immunogen	Embryonic chicken retinal cells
Formulation	Lyophilized from a 0.2 µm filtered solution in PBS with Trehalose. See Certificate of Analysis for details. *Small pack size (-SP) is supplied as a 0.2 µm filtered solution in PBS.

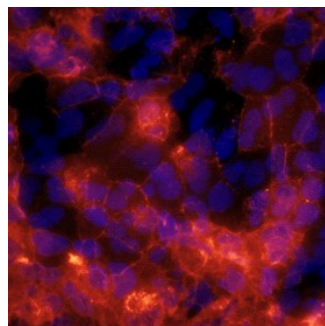
APPLICATIONS

Please Note: Optimal dilutions should be determined by each laboratory for each application. [General Protocols](#) are available in the [Technical Information](#) section on our website.

	Recommended Concentration	Sample
Flow Cytometry	2.5 µg/10 ⁶ cells	Retinoic acid-differentiated NTera-2 human testicular embryonic carcinoma cell line
Immunocytochemistry	8-25 µg/mL	See Below

DATA

Immunocytochemistry



A2B5 in NTera-2 Human Cell Line. A2B5 was detected in immersion fixed NTera-2 human testicular embryonic carcinoma cell line (differentiated with retinoic acid for 10 days) using 10 µg/mL Mouse Anti-Human/Mouse/Rat/Chicken A2B5 Monoclonal Antibody (Catalog # MAB1416) for 3 hours at room temperature. Cells were stained with red DAPI and counterstained with blue (Cells were stained with Anti-Mouse IgM Secondary Antibody (red) and counterstained with DAPI (blue)). View our protocol for [Fluorescent ICC Staining of Cells on Coverslips](#).

PREPARATION AND STORAGE

Reconstitution	Reconstitute at 0.5 mg/mL in sterile PBS.
Shipping	The product is shipped at ambient temperature. Upon receipt, store it immediately at the temperature recommended below. *Small pack size (-SP) is shipped with polar packs. Upon receipt, store it immediately at -20 to -70 °C
Stability & Storage	Use a manual defrost freezer and avoid repeated freeze-thaw cycles. <ul style="list-style-type: none"> ● 12 months from date of receipt, -20 to -70 °C as supplied. ● 1 month, 2 to 8 °C under sterile conditions after reconstitution. ● 6 months, -20 to -70 °C under sterile conditions after reconstitution.

BACKGROUND

A2B5 is a cell surface ganglioside epitope expressed in developing thymic epithelial cells, oligodendrocyte progenitors, and neuroendocrine cells (1).

References:

1. Eisenbarth, G.S. *et al.* (1979) Proc. Natl. Acad. Sci. USA **76**:4913.
2. Bottenstein, J.E. *et al.* (1988) J. Neurosci. Res. **20**:291.
3. Suzumura, A. and D.H. Silberberg (1989) Brain Res. **480**:51.
4. Dubois-Dalcq, M. *et al.* (1990) Cellular and Molecular Biology of Myelination, Springer-Verlag, pp. 3.